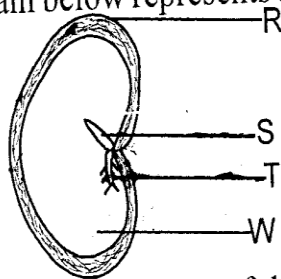


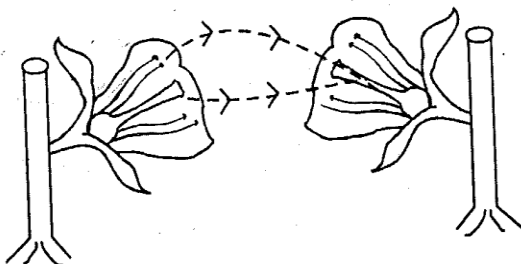
SCIENCE

- Which of the following physical changes is found in boys **only** during adolescence?
 - Enlargement of breasts.
 - Increase in weight and height.
 - Release of mature sex cells.
 - The voice deepens.
- The following are uses of light energy. Which one is **not**?
 - Communication.
 - Boiling of water.
 - Making plant food.
 - Seeing clearly.
- Which one of the following is **not** a problem related to teeth?
 - Shedding of teeth.
 - Cavities.
 - Bleeding gums.
 - Tooth decay.
- The diagram below represents a bean seed

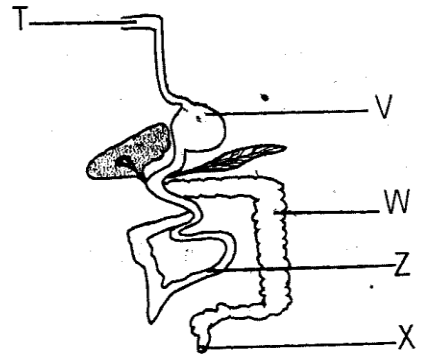


Which of the above parts of the seed feeds the young plant during germination?

- R
 - S
 - W
 - T
- The diagram below shows a type of pollination.



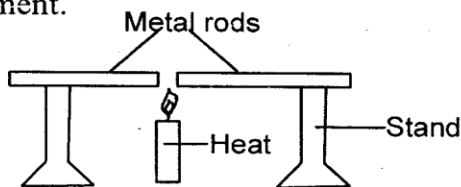
- The type of pollination shown above is:-
 - cross-pollination
 - self pollination
 - wind pollination
 - insect pollination
- Which one of the following lists consists of objects that can float on water **only**?
 - Suforia, coin, pin.
 - Bottle top, wax, paper.
 - Pin, needle, stone.
 - Needle, wax, feather.
- Which of the following substances are in the same state of matter?
 - Glue, toothpaste, oil.
 - Milk, salt, urine.
 - Steam, air, oxygen.
 - Sand, flour, soil.
- The poorest means of transmitting sound is:-
 - air
 - wood
 - water
 - metal
- The diagram below shows the human digestive system.



Which of the following parts absorbs excess water and mineral salts?

- X
- Z
- T
- W

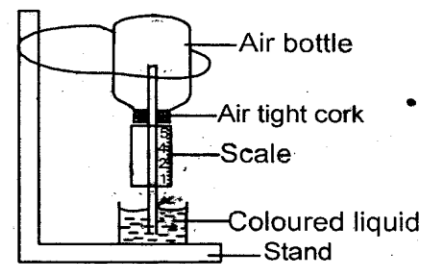
10. Which one of the following plants is a green non-flowering plant?
 A. Mushroom B. Moss
 C. Yeast D. Grass
11. Class five pupils collected the following materials to construct a weather instrument.
 (i) Metal sheets.
 (ii) Pieces of wood.
 (iii) Long nail.
 (iv) Biro pen cap.
 Which of the following instrument did they construct?
 A. Windvane B. Windsock
 C. Air thermometer D. Rain gauge
12. Which of the following is a protective method of a wasp?
 A. Biting B. Flying off
 C. Stinging D. Hiding in shells
13. Which of the following vaccines is administered to infants four times?
 A. Anti Polio B. DPT
 C. BCG D. Anti-measles
14. Which one of the following lists consists of animals with a backbone?
 A. Toad, frog, mosquito.
 B. Snake, turtle, flamingo.
 C. Tick, mite, scorpion.
 D. Snail, tick, mite.
15. Class five pupils carried out the following experiment.



Which conclusion did the pupils make?

- A. Metals expand when heated
 B. Metals do not conduct heat
 C. The metal came into contact
 D. Candle is a source of heat.
16. Which one of the following animals move by hopping?
 A. Mosquito B. Snake
 C. Snail D. Grasshopper
17. A flower that has light and powdery pollen grains is likely to be pollinated by:-
 A. Insects B. Water
 C. Wind D. Man

18. Which one of the following diseases is not caused by lack of some nutrients in the diet?
 A. Kwashiorkor B. Tuberculosis
 C. Rickets D. Anaemia
19. The mode of heat transfer in both liquids and gases is known as:-
 A. convection B. radiation
 C. evaporation D. conduction
20. Which one of the following properties of soil is not determined by the size of the soil particles?
 A. Texture B. Air in the soil
 C. Drainage D. Colour
21. Which one of the following characteristics makes animals to increase in number?
 A. Feeding B. Movement
 C. Reproduction D. Death
22. Which one of the following materials can be used to insulate handles of cooking utensils?
 A. Copper plate. B. Thick plastic.
 C. Aluminium sheet. D. Iron sheet.
23. The diagram below represents a weather instrument.



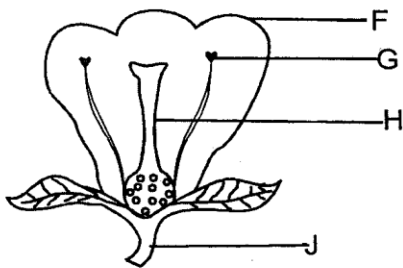
The above instrument could not work effectively because:-

- A. the scale was wrongly labelled
 B. the liquid used was coloured
 C. a thin tube was used
 D. air tight cork was wrongly placed.
24. All the following are functions of water in the body. Which one is not?
 A. Cooling the body.
 B. Helping in digestion.
 C. Adding nutrients.
 D. Removing waste.

25. The following are characteristics of human teeth;
- (i) *Pointed edge*
 - (ii) *Has ridges*
 - (iii) *Two roots*
 - (iv) *Has a sharp cutting edge.*

Which of the above characteristics describe a canine tooth?

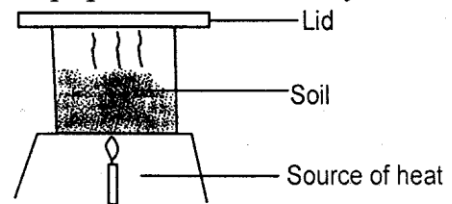
- A. (iv) B. (ii)
 C. (iii) D. (i)
26. Which one of the following is the **best** preventive measure of tuberculosis?
- A. Eating a balanced diet.
 - B. Vaccination.
 - C. Avoiding dust.
 - D. Draining water.
27. The method of weed control where the weed is held on the stem and pulled out is known as:-
- A. uprooting B. spraying
 - C. weeding D. digging out.
28. The diagram below represents a flower.



A pollen tube develops in the part marked:-

- A. J B. F
 C. H D. G
29. Which one of the following is the **last** step when making a beam balance?
- A. Making the base.
 - B. Suspending the arm.
 - C. Fixing the arm.
 - D. Suspending the tins.
30. Which of the following parts of the breathing system moves outwards when breathing in?
- A. Diaphragm. B. Lungs.
 - C. Ribs. D. Nose.

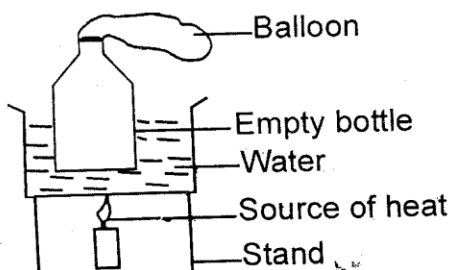
31. Which of the following consists of artificial sources of light?
- A. Lamp and firefly. B. Candle and fires.
 - C. Moon and stars. D. Stars and sun.
32. Which one of the following characteristics of clouds describes cumulus clouds?
- A. Dark grey. B. Low in the sky.
 - C. Flat base. D. Irregular shape.
33. The following animals have external fertilization. Which one does **not**?
- A. Newt. B. Frog.
 - C. Shark. D. Crocodile.
34. Which one of the following is **not** a use of water in the industries?
- A. Making farm chemicals.
 - B. Cleaning soda bottles.
 - C. Cleaning farm tools.
 - D. Cooling machines.
35. Which of the following effects of HIV and AIDS affects the family?
- A. Embarrassment. B. Low esteem.
 - C. Poor economy. D. Body weakness.
36. Which of the following plants have the same root system as a blackjack?
- A. Carrot B. Wandering jew
 - C. Onion D. Coconut
37. The following are sources of water. Which one is **not**?
- A. Dam B. River
 - C. Rain D. Pipe
38. Which one of the following is **not** an example of a special sound?
- A. Crying B. Screaming
 - C. Hooting D. Ambulance siren
39. Std. 4 pupils did the activity shown below.



In the above activity, which observation did the pupils make?

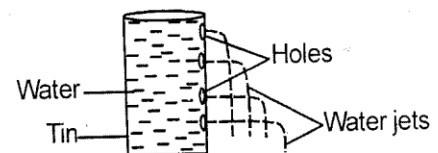
- A. Water contains soil.
- B. Water droplets under the lid.
- C. Soil contains water.
- D. Soil contains humus.

40. Which one of the following farm animals is **not** in the group of poultry?
 A. Pigeon B. Chicken
 C. Turkey D. Owl
41. Which one of the following characteristics describes the soil that has the largest air spaces?
 A. Has the best capillarity.
 B. Sticky when wet.
 C. Does not make ribbons.
 D. It is the best for farming activities.
42. Which one of the following processes are involved in the formation of steam from ice?
 A. Melting → freezing.
 B. Melting → evaporation .
 C. Condensation → freezing.
 D. Evaporation → freezing .
43. Class five pupils collected the following materials to investigate a certain property of soil;
 (i) 3 identical tubes.
 (ii) Cotton wool.
 (iii) 3 different soils.
 Which property of soil were the pupils investigating?
 A. Capillarity. B. Drainage.
 C. Living organisms. D. Soil texture.
44. Which of the following units can be used to measure the mass of a piece of chalk?
 A. Kilograms. B. Tonnes.
 C. Grams. D. Beam balance.
45. Which one of the following diseases can be prevented by eating food rich in calcium?
 A. Tuberculosis B. Rickets
 C. Anaemia D. Kwashiorkor
46. The experiment below was performed by std. 5 pupils.



The experiment was used to show that:-
 A. air occupies space
 B. liquid boils when heated
 C. gases expand when heated
 D. water expands when heated.

47. Which one is **not** a characteristic of matter?
 A. Shape.
 B. Volume.
 C. Mass.
 D. Size.
48. Simple tools are **mainly** oiled on their metallic parts mainly to prevent:-
 A. accidents
 B. theft
 C. rusting
 D. safety.
49. Which one of the following will **not** help two pupils of different masses to balance on a see-saw?
 A. Moving the lighter pupil away from the pivot.
 B. Moving the heavier pupil towards the pivot.
 C. Moving the pivot toward the heavier pupil.
 D. Moving the arm towards the heavier pupils.
50. Class four pupils carried out the experiment shown below.



Which of the following materials did they **not** use?
 A. Measuring jar.
 B. Cellotape.
 C. Nail.
 D. Tin can.