

# HOMA BAY COUNTY PRE-MOCK EXAMS

## STANDARD 8 - YEAR 2015

### SOCIAL STUDIES / CRE

Time: 2 Hours 15 Mins

READ THESE INSTRUCTIONS CAREFULLY

1. You have been given this question paper and a separate answer sheet. The question paper contains 90 questions.
2. Do any necessary rough work in this paper.
3. When you have chosen your answer, mark it on the ANSWER SHEET, not in this question paper.

HOW TO USE THE ANSWER SHEET

4. Use an ordinary pencil only.
5. Make sure that you have written on the answer sheet.

YOUR INDEX NUMBER

YOUR NAME

NAME OF YOUR SCHOOL

6. By drawing a dark line inside the correct numbered boxes mark your full Index Number (i.e. School Code Number and the three-figure Candidate's Number) in the grid near the top of the answer sheet.
7. Do not make any marks outside the boxes.
8. Keep the sheet as clean as possible and do not fold it.
9. For each of the questions 1 - 90 four answers are given. The answers are lettered A, B, C, D. In each case only ONE of the four answers is correct. Choose the correct answer.
10. On the answer sheet the correct answer is to be shown by drawing a dark line inside the box in which the letter you have chosen is written.

Example:-

In the Question Paper:

77. Who among the following disciples denied Jesus three time?

- A. James
- B. Andrew
- C. John
- D. Simon Peter

The correct answer is (D)

On the answer sheet:

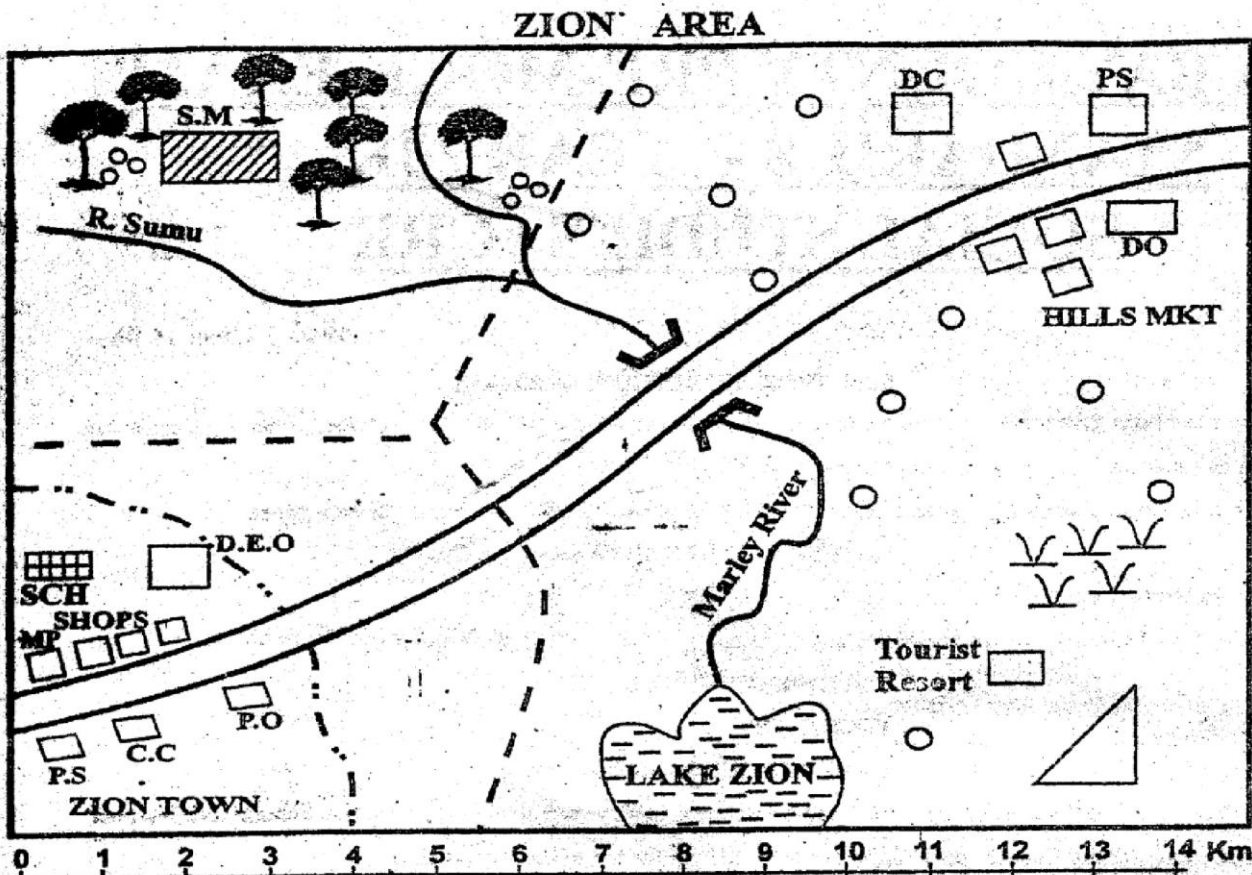
75 [A] [B] [C] [D] 76 [A] [B] [C] [D] 77 [A] [B] [C] [D] 78 [A] [B] [C] [D] 79 [A] [B] [C] [D]

In the third set, the box with the letter D printed in it is marked.

11. Your dark line MUST be within the box.
12. For each question ONLY ONE box is to be marked in each set of four boxes.

This Question Paper consists of 6 printed pages  
Candidates should check the question paper to ensure that all  
the pages are printed as indicated and no questions are missing.

TURN OVER



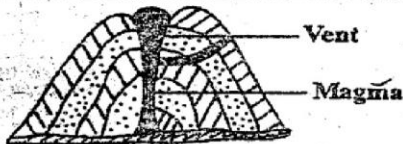
KEY	
	Tarmac Road
	River and Bridge
	Forest
	Permanent Building
	Animal Sanctuary
	Scrub
	Houses
	Town Council Boundary
	Divisional Boundary
	SM - Saw Mill
	DEO - District Education Office
	MP - Mayor's Palour
	PS - Police Station
	DC - District Commissioner
	PO - Post Office
	DO - District Officer
	CC - County Council Office

- What is the general direction of HILLS market from the saw mill?  
 A. South East                      B. North West  
 C. East                                  D. West
- Who of the following government officials is the head of Zion town?  
 A. Mayor                                  B. District Commissioner  
 C. Chief                                    D. District Officer
- People living at HILLS Market will have their land disputes solved by the?  
 A. Police officer at hills market  
 B. District commissioner at hills market  
 C. Town clerk at Zion town  
 D. Agriculture officer at Zion Town
- The animal's sanctuary found in Zion area serves which purpose?  
 A. It brings foreign exchange to Zion area  
 B. It attract tourists  
 C. It is a home for endangered animal species  
 D. It is a home for BIG FIVE animals
- The source of revenue for Zion town council is?  
 A. Collection of fines at Zion town court  
 B. Sale of trade license to shopkeepers in Zion town  
 C. Fine from people arrested by police officers  
 D. Value Added Tax (VAT) paid by people in Zion
- The type of settlement found in Northern part of Zion area is?  
 A. Sparse                                  B. Cluster  
 C. Nucleated                              D. Random
- The school in Zion town wishes to enlarge its compound. Which of the following government office should the school approach for more land?  
 A. District Education Office  
 B. Municipal Council Office  
 C. Town council office  
 D. Court in Zion town
- Which one of the following apprenticeship skills did children NOT learn in traditional African Societies?  
 A. Burning stones to get iron  
 B. How to look for roots and leaves to make medicine  
 C. Making of baskets and gourds  
 D. Working on the land
- Three of the following are reasons why the different Kenyan Communities migrated. Which one is NOT?  
 A. Increase of population    B. Adventure  
 C. Epidemics                              D. Drought

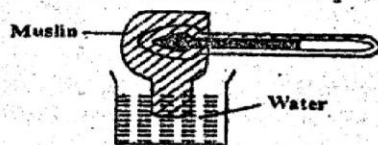


10. Which one of the following is true about the interaction of Kenyan communities during the pre-colonial period?  
 A. Worshipping the same gods  
 B. Carrying out trading activities  
 C. Having a common standing army  
 D. Organizing common initiation ceremonies
11. Who among the following convened the 1884 – 1885 Berlin Conference?  
 A. Richard Burton B. Cecil Rhodes  
 C. Otto Von Bismark D. Carl Peters
12. Which one of the following was NOT a result of the coming of Arabs and Persians in East Africa?  
 A. Coastal people were converted to Christianity  
 B. Introduction of new foods and way of dressing  
 C. Building of Coastal towns for trading purposes  
 D. Intermarried with Africans and resulted in Swahili people
13. What is the time in Kesses on longitude 32°E when it is 8:20a.m in Tripoli on longitude 18°E?  
 A. 7:24a.m B. 11:40a.m  
 C. 5:00a.m D. 9:16a.m

The diagram below shows the structure of a physical feature. Use it to answer questions 14 and 15.



14. Which one of the following shows the correct order of formation of the above feature?  
 A. Crater, lava, magma, subsidiary cone  
 B. Magma, subsidiary cone, crater, lava  
 C. Lava, crater, magma, subsidiary cone  
 D. Subsidiary cone, magma, lava, crater
15. Three of the following mountains were formed through the above process. Which one was NOT?  
 A. Mt. Ruwenzori B. Mt. Elgon  
 C. Mt. Nyiragongo D. Mt. Meru
16. The following are factors that led to the rise of Old Ghana Kingdom EXCEPT?  
 A. It opposed the introduction of taxation  
 B. It had a favourable climate  
 C. Its position enabled it to control Trans-Saharan Trade.  
 D. It had a strong well equipped army
17. Which one of the following Southern Africa Communities belong to the same language group?  
 A. Kwahu, Zulu and Ibo  
 B. Soninke, Bambara and Swazi  
 C. Dagomba, Herero and Shona  
 D. Sotho, Ovambo and Xhosa
18. The diagram below shows an instrument used for measuring weather. Use it to answer the question that follows:

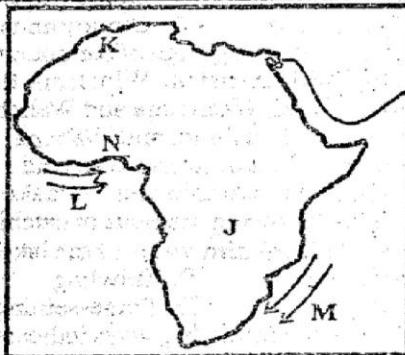


Which one of the following statements is true about

- the instrument shown in the diagram? It is used to  
 A. Determine the temperature  
 B. Record air pressure  
 C. Determine humidity  
 D. Record the speed of wind
19. Three of the following are results of the settlement of Maasai into Kenya. Which one is NOT? They  
 A. Taught other communities they found  
 B. Displaced some communities they found  
 C. Traded with other communities  
 D. Copied some customs from other communities
20. The best way to control gulley erosion is by  
 A. Planting cover crops B. Constructing cut-off drains  
 C. Strip cultivation D. Constructing gabions
21. Sango-Buru Primary School pupils are known for drug abuse. What is the BEST action the head teacher should take to stop drug abuse?  
 A. Educate pupils to use drugs sparingly  
 B. Educate pupils on the dangers of drug abuse  
 C. Identify the drug addicts and punish them  
 D. Construct a permanent perimeter wall around the compound
22. Three of the following are reasons for the scramble and partition of Africa by the European countries. Which one is NOT?  
 A. To acquire raw materials for their industries  
 B. To resettle their surplus population  
 C. To create job opportunities for the Africans  
 D. To establish and safeguard markets for their goods
23. The following are characteristics of a type of climate in Africa.  
 (i) rainfall varies between 380mm-2000mm annually  
 (ii) experiences a hot rainy season and a cool dry season  
 (iii) temperature ranges between 15°C-25°C  
 (iv) Long distance rains are caused by the South East Monsoon winds  
 Which climate condition is described above?  
 A. Equatorial B. Savannah  
 C. Semi-desert D. Mediterranean
24. Which one of the following results of Lenana's collaboration with the British had the most lasting effect for the Maasai?  
 A. Lenana's recognition as a paramount chief  
 B. The use of Maasai warriors to conquer other community  
 C. Food supplies and cattle for the Maasai  
 D. The construction of the railway line through Maasai land
25. The BEST time to thresh millet is when the weather is  
 A. Cool and rainy B. Sunny and windy  
 C. Cool and calm D. Cloudy and rainy
26. Three of the following groups of communities took part in Maji Maji up-rising. Which one did NOT?  
 A. Wanyamwezi, Wachagga and Wahehe  
 B. Wapogoro, Wambugu and Wabena  
 C. Wangoni, Wazaramo and Wangindo  
 D. Wasangu, Wamatumbi and Wamakonde
27. Which of the following methods of catching fish is MOST suitable in calm water of the lake?  
 A. Line fishing B. Trawling  
 C. Traps D. Purse-seining
28. Which one of the following ways indicates how

- pupils may be abused while at school?
- Compelling them to complete homework
  - Retaining them of extra teaching
  - Making them clean the chalkboard
  - Retaining them in class during break time
29. Which one of the following is NOT a reason why first aid is administered to accident victims?
- To be a first class driver
  - To promote recovery
  - To reduce pain and suffering
  - To save their lives
30. Below are some conditions necessary for the growing of a crop:
- deep well drained fertile soils
  - well distributed rainfall between 1500mm and 2000mm throughout the year
  - constant average temperatures between 27°C and 30°C
  - high humidity throughout the year
- The crop that grows under the above listed conditions is?
- Pyrethrum
  - Tea
  - Cloves
  - Wheat
31. The study of fossil material in various pre-historical sites is referred to as?
- Excavation
  - Tabulation
  - Archaeological sites
  - Archaeology
32. The following were contributions of an African leader towards the struggle for independence:
- Introduced a constitution of a central government with ministers
  - Abolished slave trade
  - Supported liberation movements in Africa
  - Was a founder member of O.A.U
- Who is the leader referred to?
- Leopold Senghor
  - Julius Nyerere
  - Nelson Mandela
  - Haile Selassie
33. Three of the following are characteristics of traditional farming in Kenya. Which one is NOT?
- Loss of soil fertility leads to movement of people to new areas
  - Trees are cut and burnt
  - Use of machinery
  - Small portions of land are cultivated at a time
34. Which one of the following statements is true about the National Flag of Kenya?
- It was inherited from freedom fighters
  - It is a symbol of national unity
  - It was given to Kenyans by the British
  - Its colours represent the arms government

Use the map of Africa below to answer questions 35 to 38.



35. The following are uses of a mineral mined in country marked J EXCEPT?
- Making motor vehicle radiators
  - Making water and gas pipes
  - Making medals, ornaments and jewellery
  - Making alloy of Bronze and brass
36. The relief feature marked K is \_\_\_\_\_?
- Fouta Djallon plateaus
  - El Djouf basin
  - Tibesti Mountains
  - Atlas mountains
37. The ocean currents marked 'L' and 'M' are?
- Guinea and Canary
  - Somali and Canary
  - Guinea and Mozambique
  - Benguela and Somali
38. The Multi-purpose river project marked N is the?
- Kariba Dam
  - Aswan High Dam
  - Volta River Scheme
  - Tana River Projects
39. Which one of the following colonial system of administration was applied in Mozambique?
- Indirect rule
  - Assimilation
  - Paternalism
  - Direct rule
40. Which one of the following groups of problems is a problem facing urban centres in Eastern Africa?
- |   |   |
|---|---|
| A | - Poor planning for provision of services and facilities<br>- Heaps of uncollected garbage<br>- Growth of slums |
| B | - Traffic jam<br>- Provision of good services and facilities<br>- Unemployment among youths                     |
| C | - Shortage of water<br>- Good modern houses<br>- Adequate facilities  |
| D | - Unemployment<br>- Shortage of water<br>- Reduced congestion   |
41. Three of the following are ways in which road accidents are reduced in Kenya. Which one is NOT?
- Driving when not in good health
  - Displaying road signs on all roads
  - Introducing speed governors and safety belts
  - Grazing far away from the road
42. Which one of the following isn't a subordinate court?
- Court Martial
  - Kadhis Court
  - High Court
  - Magistrate Court
43. The present governor of Kisumu County is \_\_\_\_\_
- Cyprian Awiti
  - Cornel Rasanga
  - Evans Odhiambo Ranguma
  - Jacktone Nyanungo
44. The following are uses of soil. Which one is NOT traditional?
- Making of bricks
  - Growing of cash crops
  - Decoration
  - Growing of food crops
45. The following are characteristics of a certain type of soil:
- has fine particles
  - easily water logged
  - cracks when dry
- The above type of soil is likely to be found in the following regions EXCEPT?
- Mwea Tebere
  - Chemelil
  - Kibos
  - Tani
46. Which of the following is NOT benefit of industrialization to the country?
- Earning of foreign exchange
  - High cost of energy



- C. Improvement of infrastructure  
D. Self-sufficiency on industrial goods
47. Below are some factors which favour rapid industrialization in South Africa  
(i) presence of wide range of minerals  
(ii) availability of low-wage labour  
(iii) availability of ready markets  
(iv) research information  
(v) political stability  
Which of the following combinations of factors favours South Africa only?  
A. ii, iii and v                      B. i, iv and v  
C. i, ii and iii                        D. iii, iv and v
48. Kenya's philosophy of Nyayo introduced three other philosophies. Which one was NOT?  
A. Humility                            B. Unity  
C. Love                                 D. Peace
49. Below are tourist destinations in Africa.  
(i) Serengeti Game Park  
(ii) Kruger National Park  
(iii) Victoria falls  
(iv) Ancient town of Marrokech  
(v) Valley of kings  
(vi) The Coastal beaches  
(vii) Maasai Mara Game Park  
Which one of the destinations are found in South Africa, Egypt and Morocco respectively?  
A. iii, vi and vii                      B. ii, iv and v  
C. vi, i and iv                         D. ii, v and iv
50. The organization of Africa Unity (O.A.U) had the following challenges EXCEPT?  
A. Lack of capacity to enforce resolutions.  
B. Occasional misunderstandings among member states  
C. HIV/AIDS pandemic  
D. Political stability
51. Which one of the following statements about settlement schemes in Kenya is NOT true?  
A. They have helped increase food production  
B. They were introduced by white settlers  
C. They have helped reduce problem of landlessness  
D. Some have been established by reclaiming land
52. Which of the following statements is true about both fishing in Japan and Kenya?  
A. Marketing is done individually  
B. Fish farms are large  
C. Traditional methods of fishing are used  
D. Mainly keep trout and tilapia
53. What is the MAIN function of prisons department in Kenya?  
A. Employs the criminals  
B. Retries the criminals  
C. Denies criminals human rights  
D. Rehabilitates criminals
54. The best way of encouraging more fishing in the rivers in Kenya is \_\_\_\_\_?  
A. Introducing cheaper fishing nets  
B. Educating people on the benefits of eating fish  
C. Encouraging formation of co-operatives to sell

- fish feeds
- D. Baring over fishing
55. Which of the following units is NOT part of Kenya police?  
A. Tourism and Diplomatic police unit  
B. General Service Unit  
C. Air-wing Unit  
D. Administration police unit
56. The M.P of Mumias wanted to meet sugar cane farmers in Mumias towns but the meeting aborted when the police men dispersed farmers and injured the M.P. Which of the following rights was the M.P denied?  
A. Freedom of movement  
B. Freedom of association  
C. Freedom of speech  
D. Freedom of fair treatment
57. Beef farming is mainly practiced in Kenya and Tanzania. Which one is the least factor promoting this?  
A. As a sign of prestige  
B. It earns the countries foreign exchange  
C. Presence of alternative cheaper source  
D. To increase supply of meat
58. The nomination dates of a candidate to an elective post in Kenya is announced by the?  
A. Presiding officer  
B. Chairman of the electoral commission  
C. President  
D. Returning officer
59. Which one of the following factors least undermines peace in the country?  
A. Coups                                B. Religious divisions  
C. Violation of people's rights  
D. Providing leadership
60. Two pupils were arguing about the ownership of a text book. What is the best action for the teacher to take?  
A. Advice the pupils against fighting  
B. Punish them equally  
C. Retrieve the book  
D. Divide them the book equally
- C.R.E**
61. According to Genesis 3 Adam and Eve realized they were naked when \_\_\_\_\_?  
A. They were visited by the serpent  
B. They were called by God  
C. They ate the forbidden fruit  
D. They were visited by God in the Garden
62. "Don't be afraid go down to Egypt for I shall make you a Great Nation there" who was told these words?  
A. Jacob                                 B. Moses  
C. Abraham                            D. Joseph
63. One of the following creates good relationship, which one?  
A. Faithfulness, pride, kindness  
B. Generosity, kindness, hatred  
C. Kindness, generosity, faithfulness  
D. Generosity, gossip, faithfulness

64. \_\_\_\_\_ are stories in our traditional culture that explains origin of things?  
 A. Legends B. Folk tales  
 C. Myths D. Lullabies
65. Who among the Bible personalities was a deacon?  
 A. Permanas B. Andrew  
 C. Dinah D. Deborah
66. Which of the following Data is true of Jesus' life?  

<u>DIED</u>	<u>GREW</u>	<u>BIRTH</u>
A. Bethlehem	Nazareth	Jerusalem
B. Jerusalem	Bethlehem	Nazareth
C. Jericho	Nazareth	Bethlehem
D. Jerusalem	Nazareth	Bethlehem
67. Annet a Std Seven girl saw her mother taking her father's money from a coat. When her father asked about the money Annet chose to keep quiet. Which virtue did she lack?  
 A. Honesty B. Trust  
 C. Courage D. Patience
68. Who among the following people broke the sixth commandment?  
 A. Solomon B. Saphira  
 C. Elijah D. David
69. The book of Acts was written by Dr. Luke. It was addressed to?  
 A. Theophilus B. Mathew  
 C. John D. Titus
70. Which of the following mission stations in Kenya was started as a colony of free slaves?  
 A. Rabai B. Freetown  
 C. Kikuyu D. Maseno
71. During the 40 years of wondering in the desert the Israelites were led by \_\_\_\_\_?  
 A. Thunder and lightning  
 B. Moon and stars  
 C. Fire and clouds  
 D. Rain and thunderstorm
72. Abraham was told to offer Isaac as a sacrifice on Mount?  
 A. Canaan B. Moriah  
 C. Sinai D. Jerusalem
73. During the birth of Jesus the Roman Emperor was \_\_\_\_\_  
 A. Augustus B. Caesar  
 C. Calaphas D. Pilate
74. Noah's flood is also called \_\_\_\_\_?  
 A. Deluge B. Great water  
 C. The ark D. Tabernacle
75. Saul who later became Paul was a student of \_\_\_\_\_?  
 A. Ananias B. Peter  
 C. Gamaliel D. Herod
76. A quality that Jesus required from the people who came to him to be healed was?  
 A. Patience B. Faith  
 C. Humidity D. Love
77. Which of the following descriptions DOES NOT refer to Jesus?  
 A. The rock B. Prince of peace  
 C. Wonderful cou. D. True Vine
78. Girls and boys are discouraged from pre-marital sex because?  
 A. They can contract HIV/AIDS  
 B. It is sinful  
 C. Girls can become pregnant  
 D. Sex is for the old
79. The followers of Jesus were first called Christians at  
 A. Capernaum B. Bethlehem  
 C. Antioch D. Jerusalem
80. Why should Christians share their wealth with the poor?  
 A. God is the source of wealth  
 B. To get blessing from God  
 C. To enable them enter God's kingdom  
 D. Rich people cannot enter the kingdom of God
81. The parable of the Pharisee and tax collector shows how believers should?  
 A. Talk about their deeds  
 B. Be humble before God  
 C. Be thankful  
 D. Be willing to be forgiven
82. According to Luke 10:25-37, who is my neighbour?  
 A. Sinful person B. A person in need  
 C. A sick person D. A greedy person
83. During Exodus, the following were given the role of artistic work of gold, bronze and silver?  
 A. Caleb, Miriam B. Oholiab/Bezalel  
 C. Moses/Aaron D. Jethro/Joshua
84. Which of the following is matched correctly with his mother?  
 A. Rebecca - Isaac  
 B. Mary Magdaline - Jesus  
 C. Hannah - Samuel  
 D. David - Bethsheba
85. Which of the following Books is correctly grouped?  
 A. Act - Historical B. Mathew - Law  
 C. Kings - Poetry D. Job - Letters
86. The prophet who separated water of R. Jordan with a stick was?  
 A. Elijah B. Moses  
 C. John D. Nathan
87. Who among the following people sentenced Jesus to Death?  
 A. Pontius Pilate B. Caiaphas  
 C. Herod D. Caesar
88. They arranged for her to have an abortion. Which commandment were they breaking?  
 A. First B. Tenth  
 C. Sixth D. Eighth
89. Lazarus was raised from the dead by Jesus in the town of?  
 A. Damascus B. Canaan  
 C. Bethany D. Antioch
90. Solomon's mother Bethsheba was formerly the wife of?  
 A. David B. Uriah  
 C. Rehoboam D. Jeraboam



- What is 560160.05 in words?  
 A. Fifty six million sixteen thousand and five hundredths  
 B. Five hundred and sixty thousand, one hundred and sixty, five hundredths  
 C. Five hundred and sixty thousand, one hundred and six, five hundredths  
 D. Five hundred and sixty thousand, one hundred and sixty five tenths
- What is the value of,  

$$\frac{2(7^2 + 5^2)}{2(8 - 6)} - 9$$
  
 A. 12                                      B. 28  
 C. 24                                      D. 34
- What is 18.0835 written correct to hundredths?  
 A. 18.084                                  B. 18.08  
 C. 18.10                                  D. 18.083
- What is the smallest number which is divisible by 30, 45 and 60?  
 A. 15                                      B. 540                                      C. 135                                      D. 180
- What is the place value of digit 8 after dividing the total value of digit 9 by the total value of digit 5 in the number 3917568?  
 A. Hundreds                                  B. Tens of thousands  
 C. Thousands                                  D. Tens
- What is the value of  $x$  in the equation?  

$$\frac{3x - 2 + 2x}{2} = 11$$
  
 A.  $3\frac{3}{7}$     B.  $4\frac{1}{5}$   
 C.  $1\frac{6}{7}$     D.  $12\frac{3}{5}$
- Phiona bought the following items from a shop.  
 2 packets of wheat flour @ sh. 126.00  
 2 packets of maize flour @ sh. 105.00  
 1 kg of cooking fat @ sh. 232.00  
 1 kg of sugar @ sh. 104.00  
 3 kg of rice for sh. 258.00  
  
 If she paid using 3- five hundred shilling notes, how much balance did she get?  
 A. sh. 1,056.00                                  B. sh. 701.00  
 C. sh. 159.00                                  D. sh. 444.00
- The length of two diagonals of a rhombus are 8cm and 6cm. What is the length of one side of the rhombus?  
 A. 10 cm                                      B. 4 cm  
 C. 5 cm    D. 3 cm
- What is the correct order of writing fractions  $\frac{1}{2}$ ,  $\frac{4}{7}$  and  $\frac{3}{5}$ , starting with the least?  
 A.  $\frac{2}{3}$ ,  $\frac{3}{5}$ ,  $\frac{1}{6}$                                   B.  $\frac{1}{6}$ ,  $\frac{3}{5}$ ,  $\frac{2}{3}$   
 C.  $\frac{1}{6}$ ,  $\frac{2}{3}$ ,  $\frac{3}{5}$                                   D.  $\frac{3}{5}$ ,  $\frac{2}{3}$ ,  $\frac{1}{6}$
- Draw an equilateral triangle PQR of side 4cm. Construct a circle with centre O touching line PQ, QR and RP. Which of the following is likely to be the diameter of the circle?  
 A. OP    B. RQ  
 C. PR    D. PQ

- How many fencing posts spaced 5 m apart are required to fence a rectangular plot of land measuring 40 m by 20 m?  
 A. 160                                      B. 25                                      C. 24                                      D.
- A shopkeeper sold shirts at sh. 480 each making a 20% loss. He later changed the prices of the remaining shirts and made a 10% profit on each shirt. What was the new selling price?  
 A. sh. 600                                      B. sh. 660  
 C. sh. 400                                      D. sh. 500
- Work out;  $116 \times 48 \div 6 - 35 + 135$   
 A. 928    B. 1096  
 C. 758    D. 1028
- If  $a = 2$ ,  $b = a + 1$  and  $c = \frac{1}{b} + 2$ . What is the value of the following to the nearest whole number?  

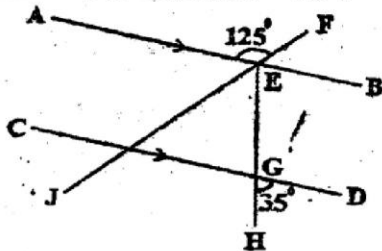
$$\frac{6c^2 + (b - a)^2}{(b + c)^2}$$
  
 A. 4    B. 5  
 C. 4.5    D. 4.4
- A farmer harvested 2000 kg of maize and let it rot for 3 days. If the mass was reducing at 2% per day, what was the mass of the maize on the third day?  
 A. 1960 kg                                      B. 1920.8 kg  
 C. 1882.4 kg                                      D. 1880 kg
- The ratio of distance covered by Derick while walking to that when cycling is 4 : 3. If he cycled a distance of 21 km, how far did he walk?  
 A. 28 km    B. 12 km  
 C. 49 km    D. 7 km
- What is the value of,  

$$0.9 + (0.6 \times 0.4) - 0.04$$
  
 0.011  
 A. 1    B. 3.26  
 C. 100    D. 10
- After a day's sale, Jane had the following denominations in her cash box.  
 70 twenty shillings coins  
 180 ten shillings coins  
 118 five shillings coins  
 210 one shilling coins  
  
 She changed all the money in the box into two hundred shillings notes. How many notes did she get?  
 A. 200    B. 20  
 C. 40    D. 400
- On a map whose scale is 1 : 20 000, a rectangular plot measures 1200 m by 800 m. What is the drawing scale area?  
 A. 320 cm<sup>2</sup>                                      B. 36 cm<sup>2</sup>  
 C. 48 cm<sup>2</sup>    D. 24 cm<sup>2</sup>
- A cylindrical tank has a radius of 2.8 m and holds 12320 litres of water. What is the depth of the water? (Take  $\pi = \frac{22}{7}$ )  
 A. 0.5 cm    B. 50 cm  
 C. 500 cm    D. 5 cm

21. What is the simplified form of?  
 $2(3x + 4y) + 5(2x - 3y)$   
 A.  $14x + 20y$       B.  $16x + 20y$   
 C.  $16x - 7y$       D.  $16x + 7y$
22. There were 180 pupils who sat for an examination in a school. Five ninths being boys, three fifths of the boys and five eighths of the girls passed. What fraction of the pupils passed the examinations?  
 A.  $\frac{1}{3}$       B.  $\frac{11}{18}$   
 C.  $\frac{7}{18}$       D.  $\frac{4}{18}$
23. The table below shows the different colours of shoes worn by children during a party.

Colour of Shoes	White	Brown	Black	Pink	Toney Red
Number of Children	5	7	12	2	8

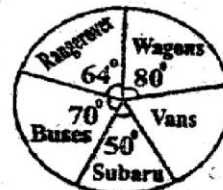
- What was the modal colour?  
 A. Black      B. Toney red  
 C. White      D. Brown
24. Construct triangle ABC where,  $AB = 6$  cm,  $BC = 8$  cm and angle  $ABC = 90^\circ$ . Bisect angle ABC and let the bisector meet AC at point X. What is the length of line AX?  
 A. 5.6 cm      B. 4.4 cm  
 C. 10 cm      D. 4.8 cm
25. In the figure below AB is parallel to CD. Angle  $AEF = 125^\circ$  and  $HGD = 35^\circ$ .



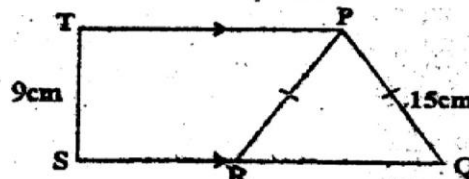
- What is the size of angle JEH?  
 A.  $90^\circ$       B.  $145^\circ$   
 C.  $145^\circ$       D.  $35^\circ$
26. Sixteen people working at the same rate can dig a farm in 21 days. If 4 people are absent, how many more days will it take the remaining people to complete the dig the farm working at the same rate?  
 A. 21      B. 5      C. 7      D. 28
27. A family uses two  $\frac{1}{4}$  litre packets of milk everyday. How many litres of milk does the family use in a fortnight?  
 A.  $3\frac{1}{2}$  litres      B. 7 litres  
 C. 112 litres      D. 70 litres
28. What is the surface area of a semi-cylindrical roof of height 0.48 cm and a diameter 2.8 cm? ( $\text{pie} = \frac{22}{7}$ )  
 A.  $9.616 \text{ cm}^2$       B.  $18.36 \text{ cm}^2$   
 C.  $18.48 \text{ cm}^2$       D.  $26.32 \text{ cm}^2$
29. What is the value of:  
 $3\frac{3}{4} + 1\frac{1}{2} - \frac{1}{4} \times \frac{5}{6} + \frac{3}{10}$ ?  
 A.  $8\frac{1}{18}$       B.  $16\frac{29}{36}$   
 C.  $7\frac{2}{9}$       D.  $4\frac{5}{9}$
30. A green grocer bought 50 kg of tomatoes for sh. 250, 100 kg of potatoes for sh. 940 and 70

bananas at sh. 2 each. She then sold the tomatoes at sh. 12 per kg, the potatoes at sh. 13 per kg and the bananas at sh. 5 each. If 10 bananas got spoilt, how much profit did she make?

- A. sh. 2,200      B. sh. 920  
 C. sh. 2,250      D. sh. 870
31. Construct a parallelogram EFGH in which  $EF = 8$  cm,  $FG = 6$  cm and angle  $HEF = 60^\circ$ . Draw the two diagonals to intersect at P. Drop a perpendicular from P to meet EF at S. What is the length of line ES?  
 A. 5.5 cm      B. 2.5 cm  
 C. 6 cm      D. 3.5 cm
32. Linet left Kampala on Sunday at 1635hr and took 10 hours 50 minutes to reach Kisumu. On which day and at what time in 12 hour system did she reach Kisumu?  
 A. Sunday, 3.25 am      B. Sunday, 3.25 pm  
 C. Monday, 3.25 pm      D. Monday, 3.25 am
33. A std 8 pupil in Rachier Primary School recorded 270 different types of vehicles that operated along Kendu Bay - Kisumu road on Friday. The pie chart below represents the recorded information.



- How many more vans than Range-Rovers operated along the road that day?  
 A. 96      B. 36      C. 24      D. 72
34. Irene left Kisumu for Migori at 8.25 am driving at a speed of 80km/hr while Ong'ow drove from Migori towards Kisumu at a speed of 96km/hr. They both met 160 km away from Kisumu. If Ong'ow started his journey at 9:35 am, what is the distance between Kisumu and Migori?  
 A. 356 km      B. 204 km  
 C. 256 km      D. 240 km
35. Which one of the following statements below is a property of a parallelogram?  
 A. Diagonals are not equal but bisect each other  
 B. All sides are equal  
 C. Diagonals are equal and bisect each other  
 D. Diagonals bisect the angles
36. The diagram below is a trapezium PTSQ. Line PT is parallel to line QS. The length of  $PR = PQ$  which is 15cm and  $TS = 9$  cm.



- What is the area of triangle PQR?  
 A.  $180 \text{ cm}^2$       B.  $67.5 \text{ cm}^2$   
 C.  $54 \text{ cm}^2$       D.  $108 \text{ cm}^2$



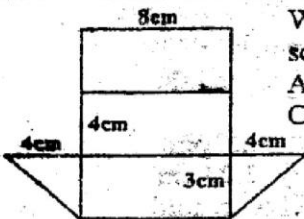
37. Kaimenyi bought  $y$  oranges, kambi bought  $x + y$  oranges while Sossion bought two oranges less than both Kaimenyi and Kambi. Which of the following expressions shows the total number of oranges they bought?

- A.  $2x + 3y - 2$     B.  $2(x + 2y - 1)$   
 C.  $2(x + 2y + 1)$     D.  $2x + 3y + 2$

38. Three women groups collected money for a water project. Thucidep collected sh. 6,350. Ondisore collected sh. 2,540 more than Thucidep and Blue ladies collected sh. 700 less than Ondisore. How much did they collect altogether?

- A. sh. 9,590    B. sh. 13,270  
 C. sh. 24,730    D. sh. 23,430

39. Below is a net of a prism.



What is the total surface area of the solid formed from the net in  $\text{cm}^2$ ?

- A. 108    B. 100  
 C. 96    D. 120

40. The table below shows telegraph money order commission.

Range	Telegraphic Commission (Shs.)
Not exceeding 500	77.00
501 - 1000	146.00
1001 - 3000	203.00
3001 - 5000	237.00
5001 - 10000	319.00
10001 - 20000	503.00
20001 - 30000	656.00
30001 - 35000	682.00

Achieng sent a telegraphic money order worth sh. 25,000. If she paid sh. 26,000, what was her balance?

- A. sh. 476    B. sh. 344  
 C. sh. 1,000    D. sh. 25,656

41. Kisilu earns a basic salary of sh. 10,000 per month plus a 5% commission on sales above sh. 10,000. In one month, he earned sh. 16,000 all together.

What was his total sales that month?  
 A. sh. 120,000    B. sh. 16,800  
 C. sh. 110,000    D. sh. 130,000

42. What is the next number in the pattern?

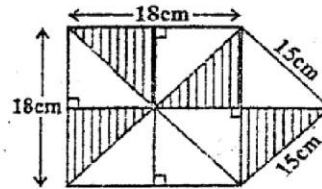
- 2, 6, 14, 26, 42, \_\_\_\_\_  
 A. 58    B. 72    C. 56    D. 62

43. The marked price of a bicycle was sh. 4000 but a discount of 5% was allowed to cash payment.

Omullo bought the bicycle on hire purchase by paying a deposit of sh. 1500 and 8 instalments of sh. 500 each. How much money would Omullo have saved had he bought it for cash?

- A. sh. 9300    B. sh. 1700  
 C. sh. 5500    D. sh. 3800

44. The figure below consists of squares and isosceles triangular parts



What is the area of the shaded part?

- A.  $216\text{cm}^2$   
 B.  $40.5\text{cm}^2$   
 C.  $162\text{cm}^2$   
 D.  $121.5\text{cm}^2$

45. The table below shows the number of people who had attended Kisumu Agricultural show in 2004

Male Adults	Female Adults	Children
894	2146	5903

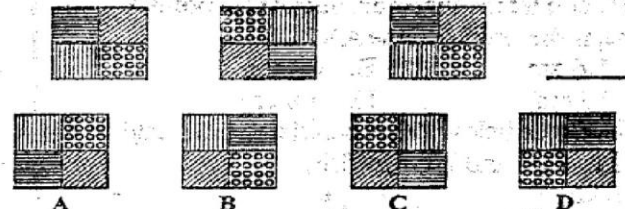
If each child paid sh. 20 and each adult sh. 100, how much more money was collected from the children than the male adults?

- A. sh. 28660    B. sh. 185940  
 C. sh. 207460    D. sh. 89400

46. Bande deposited shs. 20000 in a bank for  $1\frac{3}{4}$  years. The bank paid a compound interest at the rate of 20% per annum. How much money was in his account at the end of  $1\frac{3}{4}$  years?

- A. sh. 22000    B. sh. 27600  
 C. sh. 7000    D. sh. 27000

47. What is the next pattern in the figure below?



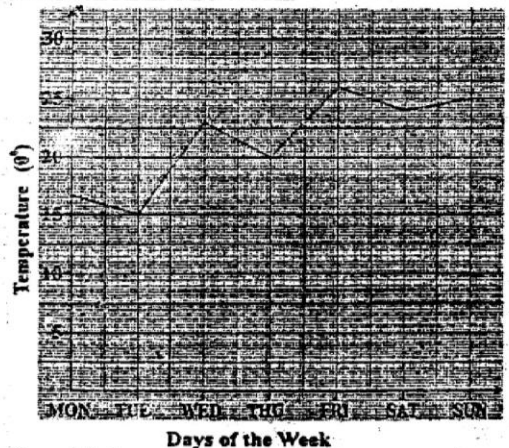
48. Which one of the following measurements will make a right angle triangle?

- A. 0.9m, 16m, 2.5m    B. 7m, 0.24m, 0.25m  
 C. 0.6m, 8m, 10m    D. 0.5m, 1.2m, 1.3m

49. A tailor needs 1.75m of material to make covers for 5 stools. How many covers can he make with 29.75m of material?

- A. 17    B. 85    C. 10    D. 22

50. The graph below shows the changes in temperature at a station in one week.



On which two consecutive days was the temperature change greatest?

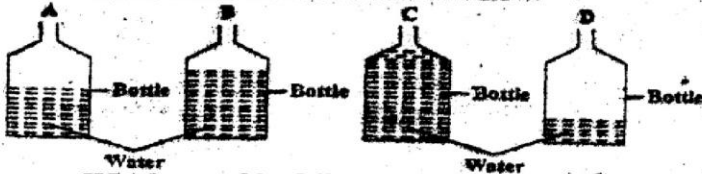
- A. Tuesday and Friday    B. Tuesday and Wednesday  
 C. Thursday and Friday    D. Monday and Wednesday

1. The following are the characteristics of a certain tooth:-  
 i) They are eight in numbers  
 ii) They have cusps or ridges  
 iii) They are used for chewing, grinding or crushing food.

Which one of the following types of teeth is described above?

- A. Molars                      B. Premolars  
 C. Incisors                    D. Canine

2. Standard 5 pupils carried out an experiment with their science teacher as shown below.



Which one of the following conclusions did they make when the bottles were hit by a nail?

- A. Bottle D produces the lowest sound  
 B. Bottle B produces the lowest sound  
 C. Bottle D produces the highest sound  
 D. Bottles C and D produce the highest sound

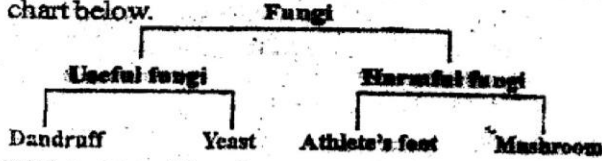
3. The following are ways in which HIV and AIDS are not spread except?

- A. Sharing instruments for removal of teeth  
 B. Shaking hands  
 C. Sharing meals  
 D. Swimming together

4. Which one of the following is TRUE about anemometer?

- A. Used for measuring strength and speed of wind  
 B. Used for measuring direction and speed of wind  
 C. Used for measuring speed and temperature  
 D. Used for measuring speed of wind

5. Standard 5 pupils classified fungi as shown in the chart below.



Which pairs of fungi are wrongly classified?

- A. Yeast and athlete's foot  
 B. Mushroom and yeast  
 C. Dandruff and mushroom  
 D. Athlete's foot and dandruff

6. Fish and adult frogs breathe by means of \_\_\_\_\_ and \_\_\_\_\_ respectively?

- A. Gills, lungs              B. Lungs, gills  
 C. Lungs, lungs            D. Gills, gills

7. The following are examples of third class levers. Which one is not?

- A. Charcoal tongs          B. Broom  
 C. Oar                        D. Pliers

8. One of the following ways cannot be applied to conserve soil. Which one is it?

- A. Mulching                  B. Afforestation  
 C. Use of organic fertilizers  
 D. Deafforestation

9. The following are the disadvantages of fertilizers.

- i) They pollute the soil  
 ii) They contain low plants nutrients  
 iii) They easily evaporates  
 iv) They are bulky to transport

Which of the following disadvantages are for organic fertilizers only?

- A. ii, iii                      B. iv, ii  
 C. iii, i                      D. i, iv

10. The following are signs and symptoms of a certain water borne disease.

- i) Violent diarrhea          ii) Vomiting  
 iii) Severe abdominal pain  
 iv) Dehydration of the body

Which one of the following diseases is described above?

- A. Typhoid                    B. Cholera  
 C. Bilharzia                  D. Malaria

11. The table below shows sexually transmitted infection and their causes

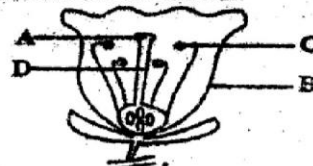
	Name of STI	Cause
A	HIV/AIDS	Bacteria
B	Chancroid	Virus
C	Syphilis	Bacteria
D	Gonorrhoea	Virus

Which one of the following diseases above is correctly matched with its cause?

12. The following animals feeds belong to fodder except?

- A. Dairy meal                  B. Desmodium  
 C. Maize stalk                D. Lucern

13. Study the flower drawn below and answer the questions that follows.



Which of the following parts marked above develops a pollen tube?

14. The experiment below was carried out by standard 7 pupils from pier Got Pri School.



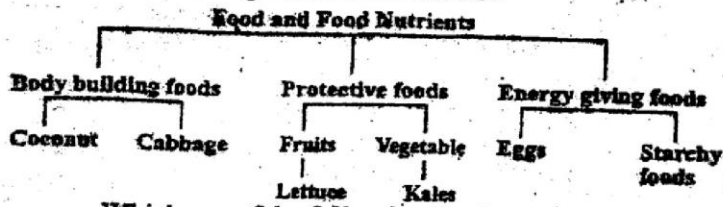
What did they observe when the bottle was tilted inside the bucket?

- A. The level of water in the bucket increased  
 B. Water enters the bottle  
 C. Bubbles of air enters the bottle  
 D. The level of water in the bucket decreased



15. The following are the largest planets. Which one is not?  
 A. Pluto B. Saturn  
 C. Jupiter D. Neptune

16. The flow chart below was drawn by standard 8 pupils of Wang' Liech pri. School. Study it and answer the question that follows:-



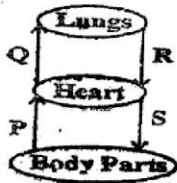
Which one of the following foods was correctly classified?

- A. Cabbages, kales and starchy foods  
 B. Lettuce, kales and cheese  
 C. Starchy foods, coconuts and kales  
 D. Eggs, cabbages and kales

17. When an electric heater is used to produce heat in a room, the energy changes are:-

- A. Electric-chemical B. Chemical-electric  
 C. Electric-light D. Electric-heat

18. The diagram below represents the blood circulatory system.



Which two blood vessel are likely to have a pulse?

- A. Q and P B. R and S  
 C. Q and R D. Q and S

19. Which one of the following is not an effect of abusing alcohol?

- A. Hallucination B. Poor health  
 C. Social and family problem  
 D. Loss of memory

20. Which one of the following livestock parasite is found in the brain, stomach and lungs?

- A. Roundworm B. Liverfluke  
 C. Lung-worm D. Hookworm

21. Which one of the following is a non-metal that conduct electricity?

- A. Gold B. Copper  
 C. Graphite D. Mercury

22. The diagram below shows a type of separation method.



The method above cannot be used to separate one of the following mixtures. Which one is it?

- A. Sugar and water B. Milk and water  
 C. Glucose solution D. Salt and water

23. Wood ash is added in a compost heap to?  
 A. Make the compost heap moist but not wet  
 B. Provide additional nutrients such as potassium  
 C. Speed up the process of decomposition  
 D. Introduce bacteria that encourage decomposition

24. Which one of the following gases is likely to form acid rain?

- A. Carbon dioxide B. Nitrogen  
 C. Oxygen D. Rare gases

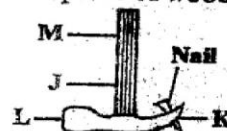
25. Which one of the following simple machines is an example of an inclined plane?

- A. Beam balance B. Pulley  
 C. Hammer D. Knife

26. Which one of the following is a way of increasing friction?

- A. Oiling and greasing  
 B. Use of ball bearing  
 C. Smoothing the surface of an object  
 D. Increasing the mass of an object

27. A carpenter was using a claw hammer to remove a nail from a piece of wood as shown below



Which position of the hammer should the carpenter apply more force to remove the nail?

- A. K B. M C. J D. L

28. In which part of the digestive system below do we find the villi?



29. The following are saprophytic plants. Which one is not?

- A. Moss B. Mushroom  
 C. Toadstool D. Mould

30. Which one of the following pairs are biotic components of environment?

- A. Plants and soil B. Animals and plants  
 C. Air and animals D. Water and soil

31. Which of the following excretory products are excreted by the skin and kidneys?

- A. Carbon dioxide and water  
 B. Excess water and urea  
 C. Sweat and excess water  
 D. Salts and excess water

32. Which one among the following characteristics does not reduce the rate of transpiration in plants found in dry areas?

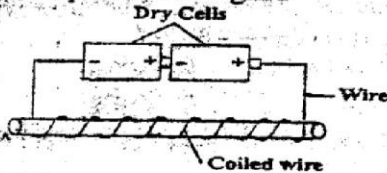
- A. Shedding of leaves B. Few sunken stomata  
 C. Reduced size of leaves  
 D. Deep and widespread roots

33. The table below shows nutritional needs for a

pregnant mother and their functions.  
Which nutrient is correctly matched with its function?

	Nutrients	Functions
A	Fibre	Prevent dehydration
B	Vitamins	Improve immunity against disease
C	Minerals	Building blocks for the foetus' body
D	Fluids	They prevent constipation in the body

34. The diagram below shows transformation of energy in a simple electromagnet.



Which one of the following is the correct energy transformation in the diagram above?

- A. Chemical – electrical – magnetic
- B. Mechanical – electrical – magnetic
- C. Magnetic – chemical – electrical
- D. Chemical – magnetic – electrical

35. The following are methods of controlling external parasites.

- i) spraying with chemicals
- ii) destruction of breeding places
- iii) making use of dips
- iv) dusting with chemicals

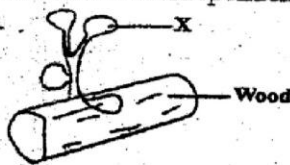
Which one of the following is the best method for controlling tsetseflies?

- A. ii
- B. iv
- C. i
- D. iii

36. The earthworms are useful to the farmers as they:-

- A. Increase water retention in the soil
- B. They are used as food
- C. Improve the texture of soil and increase air content
- D. Destroy the harmful insect pest

37. The diagram below shows interdependent between plants and plants.



The plant marked X is likely to be?

- A. Black jack
- B. Mushroom
- C. Lichen
- D. Toadstool

38. The following are nitrogenous fertilizers. Which one is not?

- A. Blood meal
- B. Bone manure
- C. Sulphate of ammonia
- D. Urea

39. The following are emotional changes during adolescence. Which one is not?

- A. Urge for freedom
- B. Interest in the opposite sex
- C. Feeling of self – importance
- D. Hair grow under the armpits and on the public area

40. The following are signs of a deficiency disease.  
i) fingernails, eyelids and tongue appear whitish

- ii) child becomes tired quickly
  - iii) child feel weak and has no energy to play
  - iv) the heart beats rapidly
- The above are signs of?

- A. Rickets
- B. Kwashiorkor
- C. Marasmus
- D. Anaemia

41. Which one of the following melts at the lowest temperature?

- A. Copper
- B. Iron
- C. Ice
- D. Gold

42. The following are domestic birds. Which one is not?

- A. Pigeon
- B. Wood peker
- C. Duck
- D. Turkey

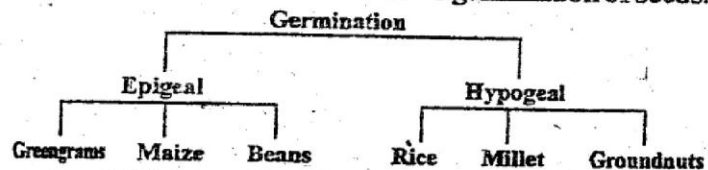
43. Which one of the following method of grazing is the most expensive to start and maintain?

- A. Herding
- B. Stall feeding
- C. Strip grazing
- D. Paddocking

44. Which of the following precautions would not help to prevent the spread of cholera?

- A. Avoiding uncooked food
- B. Disinfecting the vomit and stool of the patient
- C. Boiling water from rivers and ponds
- D. Vaccinating all the people in the area

45. The flow chart below shows germination of seeds.



Which one of the following crops are incorrect?

- A. Millet and greengrams
- B. Beans and rice
- C. Maize and groundnut
- D. Green grams and rice

46. Which one of the following is not a property of light?

- A. Light travel in all directions
- B. Light is a source of vitamin
- C. Light travel best in solids
- D. Light travels in a straight line

47. The following are characteristics of wind pollinated flowers. Which one is not?

- A. Presence of nectar
- B. No scent
- C. Dull coloured petals
- D. Feather-like stigma

48. Swimming, boat racing and surfing are all uses of water?

- A. For recreation
- B. In the home
- C. In the farm
- D. In the industry

49. Sheep and goats provide us with \_\_\_\_\_ and \_\_\_\_\_ respectively?

- A. Wool, beef
- B. Mutton, milk
- C. Beef, milk
- D. Mutton, beef

50. Splash erosion can be controlled most effectively by?

- A. Contour farming
- B. Cover cropping
- C. Building check dams
- D. Making terraces



**The passage below contains blank spaces numbered 1 -15. each space choose the best of the four alternatives given.**

Current news items about child 1, disappearances and 2 murders are undoubtedly causing 3 parents sleepless nights. Parents 4 receiving a call from 5 house help, the school or 6 other person minding their child, reporting their 7 disappearance. 8, it is almost impossible to guarantee a hundred percentage safety for our children, 9 are measures we must take to 10 possibilities of such unfortunate incidents.

Your child's protection 11 when you are informed and educated about the basics of his safety. This means being 12 to effectively teach your child about his own safety. Basic principles 13 into your child being 14 about his names, physical home address and telephone numbers that are functional, 15 complete names and their working stations.

- |     | A.            | B.           | C.         | D.         |
|-----|---------------|--------------|------------|------------|
| 1.  | kidnappers    | abductions   | abductors  | seizures   |
| 2.  | fatal         | sudden       | serious    | grisly     |
| 3.  | many          | most         | much       | least      |
| 4.  | dreadful      | dread        | are        | fearfully  |
| 5.  | a             | the          | some       | any        |
| 6.  | some          | any          | many       | most       |
| 7.  | child's       | childs'      | children's | children'  |
| 8.  | But           | However      | Basically  | Although   |
| 9.  | their         | there        | they're    | seldom     |
| 10. | minimize      | maximize     | regulate   | control    |
| 11. | started       | begins       | begun      | began      |
| 12. | measurable    | articulate   | more       | able       |
| 13. | imitate       | translate    | add        | exaggerate |
| 14. | knowledgeable | knowledgable | knowledge  | knowledged |
| 15. | parent's      | parents'     | parents    | father's   |

**For questions 16 and 17, choose the word that means the same as the underlined words**

16. All the flowers in the orchard sent forth delightful fragrance.  
 A. Oduor                      B. Smell  
 C. Stench                     D. Scent
17. Driving a car without brakes is hazardous.  
 A. Destructive              B. Risky  
 C. Fatal                        D. Endangering

**For questions 18 and 19, choose the BEST alternative to complete the sentences.**

18. Neither Amondi nor Achieng' \_\_\_\_\_ my \_\_\_\_\_.  
 A. are, friends              B. is, friend  
 C. is, friends                D. are, friend
19. By Friday, we had \_\_\_\_\_ ten songs.  
 A. Sang                        B. Sing  
 C. Sung                        D. Singed

**For questions 20 and 21, choose the sentence that is written in correct English.**

20. A. This errors will cost you marks  
 B. These errors will cost you marks  
 C. These error will cost you marks  
 D. This error will cost you mark
21. A. The spectacle is lying on the table  
 B. The spectacles are lying on the table

- C. The spectacles is lying on the table.  
 D. Their spectacles was lying on the table

**For question 22 and 23, choose the alternatives that BEST completes the sentence.**

22. All my friends except Duona, \_\_\_\_\_ horn in Kenya  
 A. were                        B. has  
 C. was                         D. will be
23. It's hardly a day since it rained, \_\_\_\_\_?  
 A. isn't it                      B. is it  
 C. didn't it                     D. did it

**For questions 24 and 25, choose correctly punctuated sentences.**

24. A. Yes my friend said "I will never leave you."  
 B. "No they are coming back after break they told the teacher."  
 C. "No," we will come tomorrow, "they shouted."  
 D. "No," my uncle said, "the cows are grazing now."
25. A. You don't respect you boss "said his wife"  
 B. What a surprise? Exclaimed Damaris.  
 C. It's feathers were drenched  
 D. Had they studied seriously, they would have hit the jackpot

Read the passage below and answer questions 26-38

The post election violence in early 2008 left everyone in Kenya devastated. People were killed, property was destroyed and there were massive displacement across Kenya. The effects of the post election are still real in Kenya today. This was and will remain a turning point for Kenya.

Most Kenyans, or so I suppose, have vowed never again! But the question that still lingers is, what we should do to forestall such an occurrence again. Following heated national debates, discussions in hotels, streets, churches and schools, there seem to be a consensus that certain national decisions, strategies and plans over the years have left many Kenyans feeling alienated. Certain ethnic groups continue to feel left out in allocation of the so called "National Cake." These communities feel that over the years, the government jobs and national resources, for example, have been allocated to other communities and not others.

The Serena negotiations led by His Excellency Kofi Annan to resolve the national crisis in early 2008 took cognizance of this reality. In this respect, they decided to have a national cohesion and integration process. The process would be led by a commission. The commission will ensure that there is no discrimination on the basis of ethnicity or race in Kenya's life.

- |   |  |
|---|--|
| <p>26. The word "<u>devastated</u>" is underlined. Another word which could be used instead is _____<br/>                 A. Damaged                      B. Happy<br/>                 C. Ruined                         D. Lost</p> <p>27. All the following were effects of post election violence EXCEPT?<br/>                 A. Displacement of people<br/>                 B. Killing of innocent citizens<br/>                 C. Creation of prosperity<br/>                 D. Property destroyed</p> <p>28. Which of the following suggestions is true according to the passage?<br/>                 A. The effects of post election violence is over<br/>                 B. The post election violence was a turning point in Kenya's history<br/>                 C. There are some people who have not been affected by the violence<br/>                 D. Children / pupils in Primary schools were not affected by the violence</p> <p>29. Kenya citizens _____<br/>                 A. should never allow the problem to recur<br/>                 B. should only go back to the violence route is they don't agree<br/>                 C. should always vote when there is disagreement among citizens<br/>                 D. will never find themselves in a situation like this again</p> <p>30. Discussions were held in all the following places except?<br/>                 A. Schools                         B. Churches<br/>                 C. Hotels                          D. Morgues</p> <p>31. The word "<u>alienated</u>" as used in the passage DOESN'T mean?<br/>                 A. Foreign                         B. Strange<br/>                 C. Unfamiliar                     D. Familiar</p> <p>32. The "<u>National Cake</u>" means all the following EXCEPT?<br/>                 A. Tarmac roads</p> | <p>B. Government revenue<br/>                 C. Hospitals that are well stocked with medicine<br/>                 D. Special schools for people in the cities</p> <p>33. If you were the president of Kenya you should?<br/>                 A. Favour only your people<br/>                 B. Allow people to do what they want<br/>                 C. Let people vote<br/>                 D. Remain the president to avoid people fighting again</p> <p>34. One of the outcomes of the Kofi Annan negotiations was?<br/>                 A. We have a National Cohesion Process<br/>                 B. People will never fight again<br/>                 C. The National Crisis has been fully resolved<br/>                 D. The people of Kenya are now fearful</p> <p>35. The process of Cohesion has been led by _____?<br/>                 A. Kofi Annan<br/>                 B. Members of Parliament<br/>                 C. A Commissioner<br/>                 D. A Commission</p> <p>36. The MAIN responsibility of the commission is to make sure?<br/>                 A. Kenya people don't fight again<br/>                 B. No community is more important than the other<br/>                 C. That there is no discrimination among Kenyans<br/>                 D. The elections officials are secure</p> <p>37. The 'occurrence' mentioned in paragraph two refers to _____?<br/>                 A. The meeting with Kofi Annan<br/>                 B. The fighting between Kenyans and other people<br/>                 C. The fighting between communities in Kenya<br/>                 D. The fight between different religions</p> <p>38. The BEST title for the passage would be?<br/>                 A. Healing the wounds of post violence<br/>                 B. The appearance of Kofi Annan in Kenya<br/>                 C. Communities of Kenya<br/>                 D. A stitch in time saves nine</p> |
|---|--|



Read the passage below and answer questions 39-50.

Steve Otieno, a driver with a local health company, was in his shift at Wilson Airport on Madaraka Day.

On that day, Otieno looked forward to a bath and relaxed afternoon in his single-room house in Kayole. As soon as he entered the communal bathroom, however, trouble began. The right of Otieno's body suddenly went numb. He could not even stretch his arm to scoop bath water from the basin and barely managed to stumble back to his room.

Even more puzzling, Otieno felt no pain. Just numbness and a tingling sensation from the right side of his face to the toes on his right foot. 'I just did not know what happened to me. I felt like half of my body dissolved,' he recounts.

What Otieno didn't know was that a blot cloth, the size of a bean, had suddenly blocked a vessel on the right side of his brain. Deprived of oxygen supply and pressed down by the cloth, his brain cells were dying. And if he did not reach a neurosurgeon, he would die.

Otieno was joining tens of millions of people worldwide who fell prey to a stealthy killer called stroke. Around the world, stroke kills at least three people every minute. It is already the third most fatal disease in the United States after heart attack and cancer and a leading killer in such developed countries as Britain and China.

According to Dr. Kisiara there are two main triggers of stroke, one, a ruptured blood vessel inside the brain tissue that pours blood inside instead of supplying it to the brain cells and two, a blocked artery that shuts down oxygen supply to the brain cells.

- |  |  |
|--|--|
| <p>39. According to the passage, Otieno worked as a _ ?</p> <p>A. Driver at Wilson Airport</p> <p>B. Driver in Kayole</p> <p>C. Driver at with a transport company at Wilson Airport</p> <p>D. Driver with a health company in Kayole</p> <p>40. Before the Madaraka Day afternoon, Otieno _ ?</p> <p>A. Was in perfect health condition</p> <p>B. Had spent the morning in bed</p> <p>C. Was resting in his single room</p> <p>D. Was looking forward to yet another shift at the bathroom</p> <p>41. Otieno used to share, his single room in Kayole with _ ?</p> <p>A. His wife and children</p> <p>B. His workmate who is not named</p> <p>C. His neighbour</p> <p>D. We are not told</p> <p>42. When did Otieno's problem begin?</p> <p>A. When he was leaving his work place</p> <p>B. As soon as he entered the bathroom</p> <p>C. When he was taking bath</p> <p>D. As he was resting in his single room</p> <p>43. The bathroom mentioned in the passage was _ ?</p> <p>A. Shared by all the people in the neighbourhood</p> <p>B. inside Otieno's abode</p> <p>C. inside his workplace</p> <p>D. his neighbours</p> <p>44. What problem did Otieno encounter?</p> <p>A. His right leg couldn't function</p> <p>B. His entire right hand side became numb</p> <p>C. He couldn't stretch his right hand</p> <p>D. He couldn't scoop some water from the basin</p> <p>45. Which of the following statements is NOT true according to the passage?</p> <p>A. Otieno felt numb on one side of his body</p> <p>B. Otieno couldn't stretch his hand once in the</p> | <p>bathroom</p> <p>C. Otieno only managed to stagger back to the house</p> <p>D. Otieno encountered a seething pain from his side.</p> <p>46. It is true to say that?</p> <p>A. Otieno had felt this way before</p> <p>B. Otieno's body had been dissolved</p> <p>C. Besides numbness there was a tingling sensation</p> <p>D. Otieno was not scared since he had been warned of the problem</p> <p>47. The cause of Otieno's problem was?</p> <p>A. Bean was stuck in his brain</p> <p>B. There was a blockage in a vessel</p> <p>C. There was a blood blockage in the left side of the brain</p> <p>D. There was a clot the size of a bean in his head</p> <p>48. The brain cells were dying because _ ?</p> <p>A. Otieno was also dying</p> <p>B. There was no neurosurgeon</p> <p>C. He was not able to breathe properly</p> <p>D. There was a scarcity of oxygen in his brain cells</p> <p>49. The disease mentioned in the passage _ ?</p> <p>A. Attacks slowly</p> <p>B. Has affected only thousands of people</p> <p>C. Kills a maximum of three people every minute</p> <p>D. Only kills people in the Western World</p> <p>50. According to Doctor Kisiara _ ?</p> <p>A. There are two causes of stroke</p> <p>B. There are a minimum of two causes of stroke</p> <p>C. Stroke is caused by a ruptured blood vessel only</p> <p>D. Stroke is soon going to be eliminated</p> |
|--|--|

# **HOMA BAY COUNTY PRE-MOCK EXAMS**

## **DARASA LA 8 - MWAKA WA 2015**

### **KISWAHILI LUGHA**

Muda: Saa 1 Dakika 40

**SOMA KWA MAKINI MAAGIZO YAFUATAYO**

1. Umepewa karatasi hii ya maswali na karatasi ya kujibia. Karatasi hii ina maswali 50.
2. Ikiwa utataka kuandika chochote ambacho si jibu andika katika karatasi hii.
3. Ukisha chagua jibu lako lionyeshe katika **KARATASI YA MAJIBU** na wala siyo katika karatasi hii ya maswali.

**JINSI YAKUTUMIA KARATASI YA MAJIBU**

4. Tumia penseli ya kawaida
5. Hakikisha ya kwamba yafuatayo umeandika katika karatasi ya majibu:

**NAMBA YAKO YA MTHANI**

**JINA LAKO**

**JINA LA SHULE YAKO**

6. Kwa kuchora kistari katika visanduku vyenye namba zinazokuhusu, onyesha namba yako kamili ya mthani (yaani namba ya shule, na zile namba tatu za mtahiniwa) katika sehemu iliyotengwa mwanzo wa karatasi ya majibu.
7. Usitie alama zozote nje ya visanduku
8. Iweke safi karatasi yako ya majibu na usiikunje
9. Kwa kila swali 1-50 umepewa majibu manne. Majibu hayo yameonyeshwa kwa herufi A, B, C, D. Ni jibu MOJA tu kati ya hayo manne ambalo ni sahihi. Chagua jibu hilo.
10. Kwenye karatasi ya majibu, jibu sahihi lionyeshe kwa kuchora kistari katika kisanduku chenye herufi uliochagua kuwa ndilo jibu.

Mfano:

24. Mluzi kwa nyoka ni kama \_\_\_\_\_ kwa tembo.

- A. Mteteo
- B. Mngurumo
- C. Mtokoto
- D. Mtweto

Jibu sahihi ni (D) (Tanuri)

**Katika karatasi ya majibu:**

21 [A] [B] [C] [D] 22 [A] [B] [C] [D] 23 [A] [B] [C] [D] 24 [A] [B] [C] [D] 25 [A] [B] [C] [D]

Katika visanduku vinavyoonyesha majibu ya swali namba 25, kisanduku chenye herufi D ndicho kilichochoywa kistari.

11. Chora kistari chako vizuri. Kistari chako kiwe cheusi na kisijitokeze nje ya kisanduku.
12. Kwa kila swali, chora kistari katika kisanduku kimoja tu kati ya visanduku vinne ulivyopewa.

**Karatasi hii ina kurasa nne zilizopigwa chapa**

**FUNGUA UKURASA**

**Kurasa 1**



**Soma vifungu vifuatavyo. Vina nafasi 1 mpaka 15. Kwa kila nafasi umepewa majibu manne hapo. Chagua jibu lifaalo zaidi kati ya vale uliyopewa.**

Usiku 1 umepiga 2 ndefu katika kijiji 3 Rubu. Usiku 4 kijiji 5 kilikuwa kimegubikwa na ukimya wa kutisha 6 cha kumfanya 7 adhani kuwa 8 na uhai 9.

Utulivu uliokuwepo 10 hisia 11 anayeingia 12 afikiri kwamba kulikuwa na hali ya hatari. Usiku huo wanakijiji walishuhudia maajabu kwani hata mbwa 13 daima 14 hawakusikika 15!

	A.	B.	C.	D.
1.	ulikurwa	alikuwa	walikuwa	ulikua
2.	atua	hatua	haufi	aula
3.	wa	cha	za	la
4.	uo huo	uo huu	huo uo	huo huyo
5.	zozote	zote	chote	chochote
6.	kiazi	kisa	kikazi	kiasi
7.	yote	yeyote	chochote	yoyote
8.	isipokuwa	palikuwa	hapakuwa	ijapokuwa
9.	wowote	lolote	lote	wote
10.	utatoa	hutoa	ungetoa	unatoa
11.	kurwa	na	katika	kwa
12.	hapo	huma	hapa	huki
13.	ambao	ambalo	ambaye	ambako
14.	hukoroma	hurwika	hubweka	huroroma
15.	sana	polepole	kidogo	kamwe

**Kuanzia swali la 16 hadi 30, jibu kila swali kulingana na maagizo uliyopewa.**

- |  |   |
|--|---|
| <p>16. Tumia kiashiria kujaza pengo. Gari _____ si zuri.<br/>A. hilo                      B. lenyewe<br/>C. lake                      D. dogo</p> <p>17. Chagua jibu lililojumulisha konsonanti ambata.<br/>A. d, ny, sh, ch              B. p, mb, k, f<br/>C. gh, ng, kh, th              D. a, e, i, o</p> <p>18. Ni nomino ipi isiyambatanihwa na ngali barabara?<br/>A. Unyoya U-YA              B. Kipanga A-WA<br/>C. Tarishi I-ZI              D. Shani LI-YA</p> <p>19. Chagua kiwakilishi katika sentensi hii. Farrel amesema kwamba yule mfupi ndiye aliyenambua.<br/>A. kwamba                      B. yule<br/>C. Farrel                      D. mfupi</p> <p>20. Neno la kuonyesha kuridhika na wema uliotendewa ni _____<br/>A. Buriani                      B. simile<br/>C. Hayati                      D. Kongole</p> <p>21. Andika kwa usemi halisi. Laba alituambia kuwa aliipenda shule yetu.<br/>A. "Naipenda shule yetu," Laba alisema.<br/>B. "Nawaambia naipenda shule yetu," Laba alisema.<br/>C. "Naipenda shule yenu," Laba alisema.<br/>D. Laba alisema, "naipenda shule yetu."</p> <p>22. Mfano mzuri wa tashbihi ni:-<br/>A. Wewe ni mtukutu mithili ya kihongwe<br/>B. Ole Wangu! Mbona nilifuatana nao?</p> | <p>C. Haraka haraka haina baraka<br/>D. Petero naye ni panya buku</p> <p>23. Chagua sentensi sahihi miongoni mwa hizi?<br/>A. Mitume imeua mijusi miwili<br/>B. Mitume wameua mijusi wawili<br/>C. Watume wameua mijusi miwili<br/>D. Watume wameua mijusi wawili</p> <p>24. Andika sentensi ifuatayo kwa wingi wa ukubwa. Ng'ombe mweusi amevunjika mguu.<br/>A. Mang'ombe weusi wamevunjika miguu<br/>B. Gombe jeusi limevunjika guu<br/>C. Vigombe vyeusi vimevunjika viguu<br/>D. Magombe meusi yamevunjika maguu</p> <p>25. Katika neno usindikishaji, ni nini matumizi ya kiambishi -ji-<br/>A. Kuonyesha nafsi.<br/>B. Kuonyesha utendaji.<br/>C. Kuonyesha kuandika.<br/>D. Kuonyesha mtendaji.</p> <p>26. Andika kwa wingi: Alitembea polepole akafika kwake.<br/>A. Walitembea polepole wakafika kwake.<br/>B. Watatembea polepole wafike kwao.<br/>C. Walitembea polepole wakafika kwetu.<br/>D. Walitembea polepole wakafika kwao.</p> <p>27. Wakati baina ya saa nane hadi saa kumi na moja jioni ni _____?<br/>A. Magharibi                      B. Alasiri<br/>C. Adhuhuri                      D. Mchana</p> <p>28. Rapemo alikula tusui mbili ya muwa. Je,</p> |
|--|---|

- alibakisha kiasi gani?  
 A.  $\frac{2}{9}$  B.  $\frac{2}{7}$   
 C.  $\frac{7}{9}$  D.  $\frac{9}{10}$
29. Rangi ya kwanza kutoka juu kwenye upinde ni?  
 A. Kijani B. Urujani

30. C. Manjano D. Nyekundu  
 Unapotaka kumbeba mgonjwa utatumia kifaa gani?  
 A. Kitata B. Mizani  
 C. Patasi D. Machelala

**Soma ufahamu huu kisha ujibu maswali 31-40.**

Kuna kazi mbalimbali ulimwepuni. Kuna ulimu udaktari, urubani, umahodha nikitaja chachetu. Aidha, kuna kazi ya uganga. Utakubaliana nami katika pitapita zako umeona vibao vingi vikitangaza waganga maarufu, vingine vimegongomelewa mitini na kujinamia tu. Je, wanaoviandika wamesababu kuwa chema chajiiza na kibaya chajitembeza?

Uganga si kazi ambayo mtu hurithi kwa siku moja. Mara nyingi utakuta mtu aliye mjuzi wa uganga ni yule ambaye ameinukia katika mazingira ya uganga. Hivyo ukipeleleza zaidi utakuta kwamba baba yake au babu yake au hata jamaa yake nzima inatokana na ukoo ambao umepata mazingira ya kiganga.

Elimu ya uganga basi ni ya miaka na mtu hawezi kujitua mganga baada ya siku chache za kutalii. Linalosikitisha zaidi ni jinsi waganga wamezuka kwa fujo. Wao hujipa majina makubwa makubwa na kutaja uwezo wao wa kusuluhisha kesi, kuondoa utasa na ugumba na kutoa nafasi za madaraka kazini. Jambo hili ni hatari kwani hunda likawapatosha wengi wanaodhani ni ukweli. Wakifika pale huitishwa kifungua mkoba na ada pia.

Si kwamba waganga wote ni bandia; kuna wale halisi kwani hata enzi za mababu zetu wao ndio waliotibu ndwele ainati kwa kutumia mitishamba. Hata hivyo tusipapie mambo bila ya kuyachungua na kukimbilia yeyote anayekuja kwa kuwa twaweza kuyaweka maisha yetu hatarini.

31. Kinyume cha kuganga ni \_\_\_\_\_?  
 A. kuokoa. B. kurithi.  
 C. kugangua. D. kudhuru.
32. Kulingana na habari hii, kazi ya uganga \_\_\_\_\_?  
 A. ni kazi ngumu sana.  
 B. hurithiwa na kizazi hadi kianzi  
 C. ni somo la muda mfupi  
 D. si jambo la kurithiwa na watoto pacha
33. Mwandishi anasema ili uwe mganga halisi?  
 A. Ujitangaze ili uweze kujulikana.  
 B. Ufanye usuhuba na waganga.  
 C. Upate mafunzo ya uganga chuoni.  
 D. Ukulie katika mazingira ya kiganga.
34. Vibao kutangaza waganga vimegongomelewa mitini kwa kutumia \_\_\_\_\_ inayotumiwa kugongomelea misumari.  
 A. nyundo B. mbao  
 C. tupa D. kinoo
35. Waganga wamezuka kwa fujo. Hii inamaanisha?  
 A. Ni wachache B. Ni kiasi  
 C. Ni maradufu D. Ni wengi
36. Ukipeleleza zaidi ..... badala ya kutumia maneno haya waweza kutumia semu:-

- A. kupiga mwayo  
 B. kupiga hatua  
 C. kupiga darubini  
 D. kupiga chenga
37. Waganga husema wanaweza kusuluhisha utasa na ugumba ili watu wapate?  
 A. Kazi B. Vikembe  
 C. Mamlaka D. Mali
38. Mwandishi anatahadharisha dhidi ya:-  
 A. Kuwa na papara bila kuchungua mambo  
 B. Kupata madaraka kazini  
 C. Kulipa ada kwa waganga  
 D. Kutibiwa na waganga wote
39. Malipo kwa mganga ni ada, nayo zawadi kwa kumshika mtoto ni?  
 A. Fichuo B. Maduhali  
 C. Fola D. Mukafaa
40. Kichwa mwafaka cha habari hii ni?  
 A. Maprofesa bandia  
 B. Waganga wote ni halisi  
 C. Waganga wa mitishamba  
 D. Waganga na waganguzi

**Soma kifungu kifuatacho kwa makini kisha ujibu maswali 41 hadi 50.**

Demokrasia ni mfumo wa utawala ambao viongozi wake huchaguliwa kwa njia ya kupiga kura. Aidha, huwashirikisha wananchi kupitia wabunge waliochaguliwa. Wabunge ni wawakilishi wa watu bungeni.

Utawala wa kidemokrasia huhimiza na kuruhusu haki za uraia, kama vile uhuru wa kusema, kushiriki, kuabudu na kutoa maoni kuhusu mambo mbalimbali katika nchi. Vile vile, demokrasia husisitiza kuzingatwa kwa sheria katika utawala. Uongozi wa walio wengi sharti uheshimu haki za wachache.

Nchi inayofuata mfumo wa kidemokrasia hujenga jamii inayosisitiza umoja na usawa wa watu wote. Aghalabu



katika uongozi wa aina inayorejelewa, nchi huongozwa na wanademokrasia.

Demokrasia hurwaruhusu wananchi kushiriki katika siasa ya nchi. Watu huwa huru kusema hali ilivyo katika utawala wao. Hufanya biashara bila kubaguliwa. Uwazi, uwajibikaji, uzalendo, uvumilivu wa kisiasa, uchaguzi wa haki na kusikizana baina ya watu hupewa kipaumbele.

Katika nchi yenye idadi ndogo ya watu, demokrasia ya moja kwa moja hufuatwa. Waja hupigia katiba kura, huwataka viongozi kuwatafulia matatizo yanayowakumba, kuibua sheria za kufikiriwa na kamati ya kuchunguza na kurekebisha sheria hiyo.

Kwa upande mwingine, katika utawala usio wa moja kwa moja, viongozi wa wananchi huwawakilisha bungeni. Iwapo taifa litazingatia demokrasia, basi visa vya dhulumu dhidi ya raia wake havitashuhudiwa. Raia watapewa uhuru wa kujitelea kabla ya kutiwa mbaroni na kufunguliwa mashtaka.

Mfumo wa kidemokrasia huzingatia haki za kibinadamu na usawa katika jamii pasi na kuchagua kabila, rangi au tabaka. Ikiwa mfumo wa demokrasia utafuatwa katika nchi yoyote ile, basi utangamano utakuwa ni nguvu, utengano ni udhaifu.

- |   |  |
|---|--|
| <p>41. Kulingana na kifungu hiki, demokrasia ni:-</p> <p>A. Mfumo wa viongozi kuwasikiliza wananchi</p> <p>B. Mfumo wa kuwachagua viongozi kwa kuwapigia kura</p> <p>C. Kuwashirikisha wananchi kwa wabunge</p> <p>D. Kuwapigia kura viongozi wa nchi</p> <p>42. Wabunge ni _____</p> <p>A. Wawakilishi wa watu katika bunge</p> <p>B. Wawakilishi wa washirikishi wa wananchi</p> <p>C. Washirikishi wa wananchi bungeni</p> <p>D. wawakilishi wa wabunge waliowachagua</p> <p>43. Kulingana na kifungu hiki, demokrasia hujenga?</p> <p>A. Jamii yenye umoja na usawa wa wote</p> <p>B. Jamii inayoongozwa na wanademokrasia</p> <p>C. Jamii yenye umoja na usawa wa wananchi</p> <p>D. Jamii inayosisitiza umoja na usawa wa wote</p> <p>44. Kulingana na maoni ya mwandishi, mambo yanayoonyesha utawala wa demokrasia hurwa?</p> <p>A. Uhuru wa kuabudu, kushiriki na haki za raia</p> <p>B. Uhuru wa kusema, kuabudu, kushiriki na demokrasia</p> <p>C. Uhuru wa kutoa maoni, kuabudu, kusema na kuruhusu</p> <p>D. Uhuru wa kuabudu, kuimba, kushiriki, haki za uraia</p> <p>45. Hupewa kipaumbele maana yake ni?</p> <p>A. Jambo muhimu linalostahili</p> <p>B. Hushughulikiwa mwisho</p> | <p>C. Hushughulikiwa kwanza</p> <p>D. Hushughulikiwa harakaharaka</p> <p>46. Demokrasia ya moja kwa moja hufuatwa _____ katika nchi _____?</p> <p>A. Yenye idadi ndogo ya watu</p> <p>B. Yenye idadi kubwa ya watu</p> <p>C. Zenye idadi ndogo ya watu</p> <p>D. Yenye watu wadogo</p> <p>47. Wananchi huwataka viongozi _____?</p> <p>A. Kuibua sheria na matatizo yanayowakumba</p> <p>B. Kuwatatulia matatizo yanayowakumba</p> <p>C. Kuchunguza na kufikiriwa na kamati</p> <p>D. Kuchunguza na kurekebisha sheria</p> <p>48. Viongozi huwawakilisha wananchi bungeni katika:-</p> <p>A. Demokrasia isiyo ya moja kwa moja</p> <p>B. Utawala wa moja kwa moja</p> <p>C. Utawala na demokrasia isiyo ya moja kwa moja</p> <p>D. Utawala usio wa moja kwa moja</p> <p>49. Maana ya neno <u>utangamano</u> katika taarifa ni:-</p> <p>A. Kutengana kwa watu</p> <p>B. Kukasinikiana kwa watu</p> <p>C. Kushirikiana kwa watu</p> <p>D. Kusherehekea kwa watu</p> <p>50. Kichwa kinachofaa habari hii zaidi ni:-</p> <p>A. Demokrasia na siasa</p> <p>B. Umuhimu wa utawala</p> <p>C. Manufaa ya utawala na siasa</p> <p>D. Manufaa ya utawala na kidemokrasia</p> |
|---|--|





