

# NAIROBI COUNTY TRIAL KCPE 2014

## ENGLISH SECTION B COMPOSITION

Time: 40 Mins

Powered by: [www.eeducationgroup.com](http://www.eeducationgroup.com)

INDEX NUMBER	
YOUR NAME	
NAME OF YOUR SCHOOL	

### READ THESE INSTRUCTIONS CAREFULLY

1. In the spaces provided above, write your **full Index Number, your Name and Name of your School.**
2. Now open the pages, read the heading of the composition carefully and write your composition on the lines provided.

*The following is the beginning of a story: Complete it and make it as interesting as possible.*

*Dusk was approaching really fast as we walked home from school. Suddenly a loud deafening bang rent the air.....*

# NAIROBI COUNTY MOCK TRIAL KCPE 2014

## ENGLISH SECTION A: LANGUAGE

Time: 1 Hour 40 minutes

### READ THESE INSTRUCTIONS CAREFULLY

1. You have been given this question book and a separate answer sheet. The question booklet contains 50 questions.
2. Do any necessary rough work on this booklet.
3. When you have chosen your answer, mark it on the ANSWER SHEET, not in the question paper.

### HOW TO USE THE ANSWER SHEET

4. Use an ordinary pencil only.
5. Make sure that you have written on the answer sheet:-

YOUR INDEX NUMBER

YOUR NAME

NAME OF YOUR SCHOOL

6. By drawing a dark line inside the correct numbered boxes mark your full index (i.e. School Code Number and the three-figure Candidate's Number) in the grid near the top of the answer sheet.
7. Do not make any marks outside the boxes.
8. Keep your answer sheet as clean as possible and do not fold it.
9. For each of the question 1 - 50 four answers are given. The answers are lettered A, B, C, D. In each case only ONE of the four answers is correct. Choose the correct answer.
10. On the answer sheet the correct answer is to be shown by drawing a dark line inside the box in which the letter you have chosen.

### Example

Choose the correct word to fill in the blank space

24. Mutahi chose to walk the two kilometres to school \_\_\_\_\_ it was very hot.

- A. though
- B. while
- C. because
- D. but

On the answer sheet:

A  B  C  D

A  B  C  D

A  B  C  D

A  B  C  D

In the set of boxes number 24, the box with letter A printed in it is marked.

11. Your dark line MUST BE within the box.
12. For each question ONLY ONE box is to be marked in each set of four boxes.

This Question Paper consists of 4 printed papers

Read the following passage. It contains blank spaces numbered 1 to 15. For each blank space, choose the best answer from the choices given

The people on the beach are as 1 as the scenery. On the shore, fishermen 2 old shorts and worn - out shirts mend their nets with 3 hands. Their dug - out canoes rock 4 in the small waves, waiting for their owners to 5 on yet another expedition. Young girls, their khangas knitted around their shoulders, poke in the 6 mud, looking for edible crabs and shellfish to sell. Further to the shore life is calm and relaxed in the hot sun. Women in brightly coloured khangas 7 around the huts, sweeping, or grating coconut for the meal. 8 night, drums beat, horns blow and young girls with feathered 9 and short white skirts, dance vigorously and joyfully for their people. There are also other people 10 inhabit tourists from all over the world who 11 in from faraway places to relax. 12 on the beach and sun-bathe. These people enjoy 13 from their cold climates and believe that it is healthy and attractive to become sun-tanned by lying in the sun. 14 of them are taken by the fishermen to see the reef and swim in the warm ocean searching for fish. 15 you see them walking on the beaches, buying carvings and seashells from the local villages.

- |                         |                     |                      |                      |
|-------------------------|---------------------|----------------------|----------------------|
| 1. A. same              | B. similar          | C. varied            | D. different         |
| 2. A. in                | B. with             | C. on                | D. of                |
| 3. A. strong tough thin | B. strong thin long | C. tough strong thin | D. tough thin strong |
| 4. A. gently            | B. lovingly         | C. always            | D. strongly          |
| 5. A. set in            | B. set out          | C. set off           | D. set on            |
| 6. A. sandy             | B. marshy           | C. stony             | D. smelly            |
| 7. A. stroll            | B. plod             | C. strut             | D. saunter           |
| 8. A. For               | B. At               | C. in                | D. On                |
| 9. A. head-dress        | B. head dress       | C. head-dresses      | D. headdress         |
| 10. A. whose            | B. which            | C. who               | D. whom              |
| 11. A. have flown       | B. flew             | C. had flown         | D. fly               |
| 12. A. lain             | B. lied             | C. lay               | D. lie               |
| 13. A. getting away     | B. getting off      | C. getting into      | D. getting down      |
| 14. A. More             | B. Many             | C. Much              | D. Most              |
| 15. A. Nevertheless     | B. Or else          | C. Hence             | D. Therefore         |

In questions 16 and 17 choose the best alternative to complete the sentences

16. The oil tanker \_\_\_\_\_ into flames.  
 A. bursting                      B. burst  
 C. bursted                      D. had bursted
17. He had a \_\_\_\_\_ in his hand.  
 A. black, small, paperbag, round  
 B. paperbag, small, round, black  
 C. round, small, black, paperbag  
 D. small, round, black, paperbag

For questions 18 choose the best alternative that means the same as the underlined phrase

18. The stranger was put up in a hotel for a few days.  
 A. established                      B. tolerated  
 C. build                              D. accommodated

Choose the alternative that best completes the sentence/or question 19

19. Baraka seldom visits his mother \_\_\_\_\_ ?  
 A. will he                              B. won't he  
 C. doesn't he                          D. does he

For questions 20 choose the alternative that means the same as the underlined sentence

20. The teacher told the pupils, "Tomorrow is a public holiday."  
 A. The teacher declared tomorrow a public holiday.  
 B. The teacher told the pupils tomorrow is a public holiday.  
 C. The teacher told the pupils that the next day would be a public holiday.  
 D. The teacher said tomorrow was a public holiday.

For question 21 choose the sentence which is correctly punctuated

21. A. The nurse shouted, "Open all the windows!"  
 B. The nurse shouted, "Open all the windows".  
 C. "The nurse shouted. Open all the window"  
 D. "The nurse shouted," Open all the windows.

For questions 22 and 23 choose the arrangement of the given sentences to make sensible paragraphs

22. (i) today improved sanitation and hygiene  
 (ii) child mortality was high due to infectious diseases  
 (iii) have almost eliminated those diseases  
 (iv) along with antibiotics and vaccines  
 A. (iv) (iii) (i) (ii)                      B. (iv) (iii) (i) (ii)  
 C. (ii) (i) (iv) (iii)                      D. (ii) .iv) (i) (iii)
23. (i) but also the leading pupil in the county  
 (ii) when the examination results  
 (iii) were announced later that year  
 (iv) Tundo was not only the top of class  
 A. (ii) (iv) (iii) (i)                      B. (ii) (iii) (1) (iv)  
 C. (iv) (i) (ii) (iii)                      D. (iv) (ii) (iii) (i)

Read the paragraph below and answer questions 24 and 25.

The following traders are friends. Abu, Malia, Tesi and Asha. Abu, Malia, Tesi and Asha all sell beans and flour. Tesi as well as Abu sell yams and maize. Malia and Asha sell peas. Abu sells oranges like Asha.

24. Who sells more items than others?  
 A. Asha                                  B. Tesi  
 C. Malia                                  D. Abu
25. Which traders sell fruits?  
 A. Tesi and Ash                          B. Asha and Abu  
 C. Malia and Aha                          D. Tesi and Malia

Read the passage below and then answer questions 26 to 38

About seventy five percent of the earth's surface is covered with water. The old adage 'water is life' can never be over-emphasized.

The children of Digula Mission School were therefore very excited by the headteacher's announcement that the water problem would soon be a thing of the past.

Everyone wanted water nearby because as things were, they had to walk and fetch it from a good distance away. What excited them most was that, in a week's time experts from town would be working on drilling a borehole and installing a pump right on the mission compound.

Water was the talk of the week! The villagers who lived around the mission school rejoiced: they could draw water from the school instead of walking the long distance to the well.

Soon, the long awaited day arrived. One Wednesday afternoon, a lorry pulling the strangest looking machine pulled to a halt at the mission. The children left what they were doing and ran to the lorry. As the days went by and the drilling machine did its work, interest increased rather than decreased.

The machine worked tirelessly, making strange noises. Crack! Clatter! Brack! Squeak! "Perhaps the noise will drive the children away", said someone.

No! They inched even closer. It was as if they wanted to see where the noise was coming from.

Then one day, as the machine continued drilling, it threw up a stone which zoomed past the faces of the children at high speed.

"That was close!" They all said with relief.

Later that evening, after the parents had heard the story of the stone, they warned them not to go near the machine again. They even threatened them with punishment or having to miss meals. Every child was told in no uncertain terms not to linger near that machine.

The head teacher too, gave a warning at school assembly. All this worked for a day or so. "Children will always be children" so they say. Soon the children began slipping off and circling around the machine again.

The man drilling the borehole continued to chase the children away and to warn them that they might get hurt, but all his warnings and pleas fell on deaf ears.

Days passed. Then something happened. The 'deaf' children were crowded around the machine as usual. The machine continued to work - Crack! Clatter! Brack! Squeak! then - Whap!

One of the long chains snapped and -zzzz! Whip! It all happened like lightning. The horrified children screamed when they saw ten of their friends bleeding profusely and crying groaning in pain on the ground. They scampered away as fast as their legs could carry them.

Inside the machine, a bell went off and rang very loudly. The growing commotion attracted the nearby people who came running.

The driver helped by these people, put the injured children into the lorry and drove them to the hospital. One of the boys in the hospital later remarked, 'I got a whipping far more than ten fathers combined could give. What a hard way to learn. No wonder someone wrote, "one word to a wise man is sufficient."

26. Which of the following sentence is true according to the first paragraph?
- There is no water without life.
  - Life without water is difficult.
  - Water supports man's life only.
  - There is no life without water.
27. The children's excitement was caused by
- the idea of readily available water
  - the convoy of the lorry with strange equipment
  - the announcement in the village
  - the head teacher's warning.
28. The phrase "water was the talk of the week" as used in the passage means everyone was
- talking about the borehole
  - excited about having water nearby
  - working hard to get water
  - talking about the importance of water.
29. The word closest in meaning to the word 'strangest' as used in the passage is
- common
  - unusual
  - familiar
  - famous.
30. According to the passage we can tell that the machine was
- good, quiet and efficient
  - quick, noisy and faulty
  - noisy, strange and worked tirelessly
  - deaf, noisy and faulty.
31. Why did the children move closer to the machine? A. The machine was strange.
- B. They were attracted by the strange noise.
- C. To observe the digging of the borehole.
- D. To see where the stone had come from.
32. What made all the children get warnings from their parents and the head teacher?
- The strange noise.
  - To drive them away from the noise.
  - The risk of being hit by rocks.
  - The risk of being hit by the chain.
33. Which one of the following is not true according to the passage?
- The children who got hurt were the most disobedient.
  - The head teacher warned the children too.
  - The children who escaped unhurt were also disobedient ones.
  - The parents gave children a stern warning when the stone was thrown.
34. What does the phrase "..... that was close...." mean?
- The chain had missed them narrowly.
  - The children almost missed their meals.
  - The children were too close to the machine.
  - The children had narrowly escaped being hit by the stone.
35. One of the following is NOT true. Which one?
- The accident happened very fast.
  - The driver assisted the injured.
  - The injured boy did not learn a lesson.
  - The children were taken to the hospital.
36. The children screamed when
- they realised their friends were hurt and bleeding
  - the chain on the machine snapped

- C. they were chased by the men who were drilling  
D. they heard the remarks of the injured boy.
37. Why did the nearby people come running?  
A. They saw what the machine had done.  
B. Because they heard the sudden noisy confusion.  
C. To find out why the machine had stopped.  
D. To help the children get to the hospital.

38. The best title for the passage is  
A. A narrow escape  
B. So close yet so far  
C. The borehole  
D. Learning the hard way.

Read the passage below and then answer questions 39 to 50

There are hundreds of career options out there. How do you make a career choice when you don't really know what you want to do? Doesn't it seem a difficult task to overcome? It's not. Yes, you will have to put some time and energy into making your decision, but your effort will be well worth it in the end.

Before you choose a career, you have to learn about yourself. Your values, interests and skills, in combination with certain personality traits which make careers especially suitable for you and some particularly inappropriate.

You can use self-assessment tools, often called career tests, to gather information and subsequently, to generate a list of occupations that are deemed appropriate. Some people choose to have career development professionals administer these tests but many opt to use free career tests that are available on the web.

A self assessment is the first step in the career planning process. During this step, one uses a variety of tools, sometimes erroneously referred to as career tests, to gather information about oneself. The purpose of obtaining this data is to use it to find occupations that are good or fit for the individual. People sometimes work with career development professionals who can help them with this.

In order to be effective, a self assessment must take into account an individual's values, interests, personality and aptitudes. Value inventories measure how different values are to you. Examples of these values, which play an important role in one's job satisfaction include autonomy, prestige, security, interpersonal relationships, helping others, flexible work schedules, outdoor work, leisure time and high salary.

Interest inventories ask about ones likes and dislikes regarding various activities. The premise of this self assessment tool is that people who share similar interests will also enjoy the same type of work. Examples of interests are reading, running, playing football and knitting.

The big question hence is: do we get into careers by design or accident? The choice is yours.

39. From the first sentence, how many career options are there?  
A. Few  
B. A hundred  
C. Many  
D. A few hundreds
40. Which one of the following is true according to the first paragraph?  
A. Take time and use effort in making a career choice  
B. it is not worthy to take time to choose a career  
C. There aren't many career choices  
D. One must understand oneself before making a career choice.
41. "...seem a difficult task to overcome...?" Which task is being referred to?  
A. Making a decision  
B. Making a career choice  
C. Not knowing what one wants to do  
D. Knowing there are many career options.
42. The priority one should have before making a career choice is  
A. know yourself well  
B. take career test  
C. looking for professional help  
D. using energy to make a decision
43. According to the passage; one can gather information on occupations by  
A. neither self assessment tools nor career tests  
B. career tests, referred to as self-assessment tools  
C. both self assessment tools and career tests  
D. either assessment tools or career tests.
44. Which of the following least fits in the group?  
A. Autonomy and outdoor work.  
B. Prestige and flexible work schedule.  
C. Playing football and knitting.  
D. Leisure time and high salary.
45. The sentence '...your effort will be well worth it in the end...' means  
A. the end is always worthy  
B. it is worthy to wait to the end  
C. the end is difficult to overcome  
D. the energy and time spent bears fruit.
46. What is the first step one should take in career planning?  
A. Take career tests  
B. Find an occupation  
C. Make use of the web  
D. Know your personality traits
47. According to the passage, it is important to  
A. differentiate values  
B. make an individual be effective  
C. measure how different values are to one  
D. take account of individual's values, interests and personalities
48. The word career is underlined in the first sentence. It means  
A. Occupation  
B. Skilful work  
C. Interests and skills  
D. Interests and values
49. Why is it important to make the correct career choice?  
A. For better planning.  
B. To pick the correct occupation.  
C. To earn more money.  
D. Choose inappropriate occupations.
50. The best summary for the passage is  
A. Career planning  
B. Career choice  
C. Career design  
D. Career definition

**KAUNTI YA NAIROBI**  
**MTIHANI WA MAZOEZI MWAKA WA 2014**

---

**KISWAHILI**  
**SEHEMU YA PILI:**  
**INSHA**

Muda Dakika 40

Powered by: [www.eeducationgroup.com](http://www.eeducationgroup.com)

<b>NAMBARI YAKO YA MTIHANI</b>	
<b>JINA LAKO</b>	
<b>JINA LA SHULE YAKO</b>	

**SOMA MAAGIZO HAYA KWA MAKINI**

1. Kwenye nafasi zilizoachwa hapo juu andika namba yako ya mtihani, jina lako na jia la shule yako.
2. Sasa fungua karatasi hii, kichwa cha insha kwa makini na uandike insha yako kwenye nafasi uliyoachiwa.

*Umepewa insha yako kwa maneno yafuatayo:-*

.....si kila jambo linaloonekana kuvutia kwa macho ni zuri.

**Kijitabu hiki kina kurasa 4 zilizopigwa chpa.**

# KAUNTI YA NAIROBI

## MTIHANI WA MAZOEZI MWAKA WA 2014

**KISWAHILI**

Muda: Saa 1 Dakika 40

**SEHEMU YA KWANZA:**

**LUGHA** Powered by: [www.eeducationgroup.com](http://www.eeducationgroup.com)

### SOMA KWA MAKINI MAAGIZO YAFUATAYO

1. Umpewa kijitabu hiki cha maswali na karatasi ya kujibu. Kijitabu hiki kina maswali 50.
2. Ikiwa utataka kuandika chochote ambacho si jibu andika katika kijitabu hiki.
3. Ukisha chagua jibu iionyeshe katika KARATASI VA MAJIBU na wala sio katika kijitabu cha maswali.  
**JINSI VAKUTUMIA KATIKA KARATASI VA MAJIBU**
4. Tunia penseli ya kawaida.
5. Hakikisha ya kwamba yafuatayo yanandikwa katika karatasi ya majibu: -  
**NAMBARI YAKO YAMTIHANI**  
**JINA LAKO**  
**JINALASHULE VAKO**
6. Kwa kuchora kistari katika vijisanduku vyenye nambari zinazokuhusu, onyesha namba yako karnili ya mtihani (yaani nambari ya shule. Na zile namba za mtahiniwa) katika sehemu iliyotengwa mwanzo wa karatasi ya majibu.
7. Usitie alania zozote nje ya visanduku.
8. Iweke safi karatasi yako ya majibu
9. Kwa kila swali 1-50 umpewa majibu manne. Mibu hayo yanonyeshwa kwa herufi A, B, C, P. Nijibu MOJA tu kati ya hayo manne ambayo ni sahihi. Chagua jibu him
10. Kwenye karatasi ya majibu, jibu sahihi lionyeshe kwa kuchora kistari katika kisanduku chenye herufi uliyochagua kuwa ndilo jibu.

**Mfano**

Katika kijitabu cha maswali:

17. Kitenzi 'nawa' katika kauli ya kutendesha ni;

- A. nawika -
- B. nawia
- C. navya
- D. iwishwa

**Jibu sahihi ni C**

(A) (B) (C) (D)

(A) (B) (C) (D)

(A) (B) (C) (D)

(A) (B) (C) (D)

11. Kijisanduku chenye herufi C ndicho kilichochoywa kistari.
12. Chora kistari chako vizuri. Kistari chako cheusi na kisijitokeze nje ya kijisanduku.
13. Kwa kila swali, chora kistari katika kisanduku kimoja tu kati ya vijisanduku vinne umivyopewa.

**Kijitabu hiki cha maswali kina kurasa 4 zilizopigwa chapa.**

Soma vifungu vifuatavyo. Vina nafasi 1 mpaka 15. Kwa kila nafasi unepewa malibu marine hapo. Chagua tibu lifaalo zaidi kati ya yale uliyopewa

Matokeo 1 Kiswahili 2 lugha muhimu 3 Afrika na 4 yanaonekana dhahiri 5. Kwanza lugha 6 Kiswahili 7 katika mtandao. Katika mtandao wa 8 za mkononi, kuna huduma za simu katika Lugha ya Kiswahili 9 unapopiga simu na mpokezi ameizima utaamhiwa kwamba. "Mteja wa nambari uliyopiga hapatikani kwa 10".

- |                   |                |                |                |
|-------------------|----------------|----------------|----------------|
| 1. A. za kutambua | B. wa kutambua | C. ya kutambua | D. la kutambua |
| 2. A. kuwa        | B. kua         | C. kukuwa      | D. kukua       |
| 3. A. nehi        | B. bara ya     | C. inchini     | D. barani      |
| 4. A. ulimwengu   | B. ulimwenguni | C. eneo        | D. eneoni      |
| 5. A. shairi      | B. shahiri     | C. shayiri     | D. sairi       |
| 6. A. ya          | B. za          | C. la          | D. wa          |
| 7. A. unatumika   | B. yanatumika  | C. inatumika   | D. natumika    |
| 8. A. vipepesi    | B. wavuti      | C. rungoya     | D. simu        |
| 9. A. kwa vile    | B. a vile      | C. kamwe       | D. abadani     |

Kuandika ni njia 11 muhimu ya 12. Mtu 13 hajimudu katika stadi hii anakabiliwa na vikwazo vya kina wasiliano katika ulimwengu wa sasa. Kutokana na u.muhimu wake, mwalimu 14 kumtayarisha 15 wake katika stadi hii vilivyo.

- |                    |                   |                 |                |
|--------------------|-------------------|-----------------|----------------|
| 11. A. mojawapo    | B. ambapo         | C. mojapo       | D. moja wapo   |
| 12. A. kuwasilisha | B. kuwashirikisha | C. kuwasilishwa | D. kuwasiliana |
| 13. A. ambayo      | B. ambaye         | C. ambao        | D. aliye       |
| 14. A. nana lazima | B. hana haraka    | C. ana bundi    | D. hana budi   |
| 15. A. mtoto       | B. mwanafunzi     | C. mtahini      | D. mkurufuzi   |

Kuanzia swali nambari 16 inpaka 30, Jihu kulingana a rnaagizo.

16. Chagua wingi  
Upishi wake ulimfurahisha seremala huyo  
A. Mapishi yake yaliwafurahisha seremala wale.  
B. Upishi wao uliwa furahisha seremala hao.  
C. Mapishi yao yaliwafurahisha maseremala hao.  
D. Mapishi yao yaliwafurahisha seremala hao.
17. Ni sentensi ipi haijakifishwa vyema?  
A. "Potelea mbali! Liwalo na liwe."  
B. Alhamdulillah! namshukum mungu  
C. Lo! Kumbe alikuwa jambazi!  
D. Afanalek! Ninicashau nauli.
18. Chagua sentensi inayoonyesha "JI" ya nafsi  
A. Uimbaji wake uliwaambua wageni.  
B. Jibwa lirefuniwa chumbani.  
C. Msomaji wa taarifa alisikika vizuri.  
D. Nilijisomea riwaya ya "Siku Njema".
19. Ni visawe vipi vilivyoambatanishwa vizuri?  
A. Adui — lasimu.  
B. Aibu — Heshima.  
C. Afya — Furaha.  
D. Mvuiana — Bariati
20. Chagua usemi halisi Wa;  
Mwalimu aliwaambia wazazi kuwa wange, tika kwa wakati wan gehudumiwa vyema.  
A. "Mlifika kwa wakati na mlihudumiwa vyema," mwalimu aliwaambia wazazi.  
B. "Mkifika kwa wakati mtahudumiwa vyema," mwalimu aliwaambia wazazi.  
C. Mwalimu aliwaambia wazazi, "Fikeni kwa wakati mlihudumiwa vyema."  
D. "Njoni kwa wakati mlihudumiwa vyema," mwalimu aliwaambia wazazi.
21. Methali inayofaa funzo kuwa:  
Mtu anaposababisha shida huishia kuwahusisha watu wake au jamaa yake ni  
A. Kikulacho ki nguoni mwako.  
B. Mwiba wa kujichoma hauambiwi pole.  
C. Mia nawe hafi nawe ila mzaliwa nawe.  
D. Mchumajanga hula na wa kwao.
22. Maneno yaliyopigwa mstari katika sentensi ifuatayo ni;  
Wazee wanaheshimiwa. Wao huwashauri vijana vizuri.  
A. Kiwakilishi, kielezi. B. Kiashiria, kivumishi.  
C. Kiwakilishi, kivumishi. D. Kielezi, kiwakilishi.
23. Kanusha sentensi hii;  
Mfanyakazi akilipwa mshahara wake atalipa kodi.  
A. Mfanyakazi atalipwa mshahara wake na halipi kodi.  
B. Mfanyakazi atalipwa mshahara wake na hatalipa kodi.  
C. Mfanyakazi asipolipwa mshahara wake hatalipa kodi.  
D. Mfanyakazi angelipwa mshahara wake angelipwa kodi
24. Mtu anayetoroka nchi yake na kwenda nchi nyingine kwa sababu ya janga fulani ni;  
A. mlowezi B. balozi  
C. mhaini D. mkimbizi.
25. Neno "mbwa" lina sauti ngapi?  
A. Moja. B. Mbili.  
C. Nne. D. Tatu.
26. Ugonjwa wa kuambukiza unaosababisha mtu kuumwa na koo, kichwa na kutokwa na kamasi  
A. malaria. B. mafua.  
C. pumu. D. ukambi.  
C. Malia D. Abu
27. Ni sentensi ipi ambayo si sahihi?



- A. Mwalimu wangu huja shuleni aghalabu mar-a tatu kwa wiki.  
 B. Utaingia kwenye sinema maadamu una kiingilio.  
 C. Nitahudhuria sherehe iwapo hakunia[ika.  
 D. Utafaulu maishani mradi ujiamini na ujitahidi.
28. Kutokana na kitenzi kaa tunapata nomino.  
 A. Mkazi. B. Makaazi.  
 C. Makali. D. Kazi.
29. Ni chombo kipi kati ya vifiatavyo si cha usafiri wa

- majini  
 A. Mashua. B. Merikebu.  
 C. Pantoni. D. Riksho.
30. Panga vifungu vifuatavyo kuunda sentensi sahihi.  
 (i) mazingira (ii) kupanda miti  
 (iii) kudumisha (iv) ili  
 (v) tunanua  
 A. ii, v, iv, iii, i B. iv, iii, ii, v, i  
 C. iv, ii, v, iii, i D. v, ii, iv, iii, i

**Soma kifungu kifuatacho kisha ujibu maswali 31 mpaka 40**

Mara mghani alipofika mshororo wa pili ubeti wa tatu, Yusufalikiinaijiisha kichwa chake chini mithili ya kondoo anayejikinga asinyeshewe na mvua mbugani. Mifereji ya macho ikatanuka bila simile; nayo machozi yakapukutika kama maji yanavyobubujika kutoka kwenye nazi iliyovunjwa tayari kukunwa. Yamkini beti alizozighani zilimhuzunisha mno Yusuf. Subira hakufahamu kuwa maneno aliyoyatamka yalikuwa na ujumbe mchungu kwa mmoja wa wasikilizaji wake. Ujumbe wa kukata maini hasa. Aliendelea kuimba kwa lafudhi iliyojaa rahemko ya mahaba. Uimbaji ndio hasa ulikuwa amali yake aliyopenda. Alipotaja mateso katika ubeti wa tatu hakutarajia kuwa yale aliyoyanena yangemsababishia Yusufhali ya simanzi. Waama, jiwe la manati ilingwapo liria hatari zake, kwani hujui litakayempata.

Fatuma hakuwa na habari yaliyomflka mumewe. Alidhani alikuwa amezidiwa na usingizi kwani saa saba unusu usiku zilikuwa zimegonga. Mara likchapuka onesho jingine mie ukumbiai. Warembo wapatao kumi hivi waliovalia mavazi yaliyowasaki kuanzia kiunoni hadi miguunina sidiria nyembamba za kuona zilizoyafutusha maziwa yao walijitokeza. Wasichana hao walikuwa kazini. Hapo ndipo walipojipatia kitumbua chao cha kila uchao! Walipanda jukwaani kwa minenguo ya ama yake. Walijilegeza na kuvitikisa viungo vyao kana kwamba hawakuwa na mifupa milini.

"Naam, hii ndiyo natiki haswa!" Lilisikikajanadume moja, al-maarufu Mtemi, ienye umri wa makamo na macho mekundu kama damu ikitaraba karibu na mahali alipokuwa ameketi Yusufu na Fatuma. Karibu na janadurne hilo, aliketi binti fulani aliyeonekana kuwa mcheshimcheshi, umri wake ulielekea miakakumi na mitahi au kumi na mitano hivi.

Watu mie ndani wiiendelea nai shughuli zao. Fatuma alipendezwa na ngoma, akavutiwa na kuongolewa kiasi cha kujikuta akifrichezeshacheshahā kiuno chake kitini kujibu midundo y ngoma, ishara ya mihemko yajinsi mambo yalivyonoga ukumbini.

Katika hali iyo hiyo, Fatuma alimvaa. Yusufu wake mzimamzima na kurntaka wajitokeze ukumbini kunyoosha viungo. Wakati huo ukumbi ulikuwa umeshoheni jozijozi, kila rntu na wake. Lughā ikawa ni minenguo tu. Basi! Ole wao wanaume aina wanawake wajiokosa washikaji. Maskini Fatuma alipigwa na bumbuwazi alipomwona mwenziwe kavmhiana macho na machozi yakifanya miirizi iliyoshia mashavuni pake. Fatuma ambaye hakujua beewala tee kuhusu kiini cha simanzi iliyomkamba mumewe, alimshika mkono wakatoa nje.

Wengi wa waliwaoon-maharusi baa wakiongozana kama jimbi na koo waliwadhanja siyyo. Ghulamū namoja aliyekuwa akimkumbatia mpenziwe wa kike kifuani pake huku wakisimai-ha tisti mkabala wa lango kuu la kuingiiankumbini; alisikika bayana na Fatuma akitamka: "Wewe mwangalie huyojamaa amekileta kimada chake riatikinihulafu am ebugia machozi ya simba bila kipimo." Jicho alilogeuziwa na Fatuma lilitosha kumtahadharisha barubaru huyo kuwa mzigo wa mwezako ni kanda la usufi. (Makala kutoka Riwaya ya mateso)

31. Katika habari hii mghani alikuwa nani?  
 A. Subira. B. Yusufu.  
 C. Fatuma. D. Wasichana.
32. Ni lipi lililomwathiri Yusufu?  
 A. Mifereji ya mchozi.  
 B. Ujumbe wa shairi.  
 C. Warembo kujitokeza.  
 D. Kuzidiwa na usingizi.
33. Kwa nini Fatuma alichezeshacheshahā kiuno?  
 A. Aliongolewa kwa wimbo wa taifa.  
 B. Alivutiwa na midundo ya ngoma.  
 C. Alipenda kiuno chake vizuri.  
 D. Hakujua bee wala tee.
34. Mabanati waliotajwa katika habari hii walizumbua riziki zao kutokana na yote yaliyonakiliwa isipokuwa  
 A. mavazi waliyoyavaa  
 B. kucheza midundo  
 C. kupanda jukwaani  
 D. kuimba nyimbo.
35. Teua kundi ambalo lina ala za muziki pekee  
 A. Ngoma, panga, toroli.  
 B. Jeti, darubini, kifaru.  
 C. Kayamba, rnsondo, kinubi.  
 D. Kinanda, kekee, fuawe.
36. Mghani ni nani kama ilivyotumika katika ufahamu?  
 A. Aliyeimba mashairi.  
 B. Aliyefunza mashairi.  
 C. Aliyetunga mashairi.  
 D. Aliyefunza ughani.
37. Ni matukio yapi yaliyotendeka baada ya saa saba?  
 A. Kupanda jukwaani, kughani shairi.  
 B. Kulegeza viungo, kuimba kwa lafudhi.  
 C. Kuvalia mavazi ya kusaki, watu kuendelea na shughuli zao.  
 D. Hali ya simanzi, machozi yaliyopuputika, macho ikatanuka.
38. Kati ya mavazi haya ni yapi ya kike pekee  
 A. Sketi, sidiria, shimitzi,  
 B. Bombo, bwelasuti, suruali.  
 C. Sketi, blauzi, sweta.  
 D. Kitenge, surupwenye, jezi.
39. Mwandishi anaposema ukumbi ulisheheni jozi jozi  
 A. Ukumbi ulijaa wazee.  
 B. Adinasi walicheza wawili wawili.  
 C. Vijana walisheheni kumbi wakiimba.  
 D. Banati walinengua viuno pekee.
40. Ujumbe mwafaka unaowasilishwa kwenye habari hii ni  
 A. Mzigo wa mwenzio ni kanda la usufi.  
 B. Matumbuizo ya usiku.  
 C. Was ichana kujipatia kazi.  
 D. Kughani kwa mashairi.

Soma kifungu kifuatacho kisha ujibu maswali 41 mpaka 50.

Utalii ni sekta muhimu sana hapa nchini Kenya. Tunaweza kujia sekta hii uti wa mgongo katika uchumi wetu. Sekta hii inatuletea kiwango kikubwa cha pesa za kigeni. Ukweli ni kuwa sekta hii inaweza hata kuwa ikituletea pesa nyingi zaidi iwapo mikakati kabambe itawekwa na washikadau wote.

Washikadau wanastahili kuwekeza katika sekta hii hususan katika miundo mnsingi kama barabara, stirma, maji ila pia usalama wa watalii unafaa kuimarishwa si haba. Kamwe hatutaki kusikia eti watalii waneshambuliwa katika maeneo fulani nchini mwetu. Hayo ni matendo ambayo huipaka nchi yetu tope machoni pawageni.

Aidha, wananchi wanastahili kuhimizwa kutalii nchi hii yetu. Ni jambo la kuvunja moyo sana kuona kuwa asiliffilia ndogo sana ya Wakenya hutembelea vivutio vya utalii kama vile mbuga za wanyama. Asilimia kubwa zaidi ya Wakenya haijamwona simba. Ajabu iliyote! Huwona tu pichani.

Changamoto ipo ili Wakenyawetu wahimizwe kitalii nchi yao. Utalii urneinua uchumi wetu kwa kila njia. Hata hivyo, hakuna kizuri kisicho na ila. Kwa vyovyote vile sharti serikali iingilie kati na kupiga kwa jino na ukucha watalii wanaoeneza maovu richini. Ni jambo la kuhuzunisha kusia kuwa wapo watalii ambao lengo lao kuu kufika hapa ni kufanya ukahaba. La kuvunja moyo sana, wao hulenga watoto walio chini ya umri wa miaka kumi na minane. Uhayawani huu ambao umeenea sana katika niji yetu; sasa huko pwani sharti ukorneshwe.

Aidha, watalii ambao hujihusisha na dawa za kulevya hawastahili kukaribishwa hapa nchini. Wanapofika hapa, maranyingi hurwadanganya vijana wetu kuingiwa ulevi usiofaa.

Hawa ni watalii ambao nia yao ni kueneza saratani ya mihadarati ili kuwakinga vijana wetu ambao ndio viongozi wetu wa kesho. Lazima watalii hao wapigwe marufuku kukanyaga nchini hapa.

(Makala kutoka stadi za Kiswahili)

41. Kwa mujibu wa kifungu lengo kuu la utalii ni
  - A. kufanya ukahaba mijini
  - B. kuinua uchumi nchini
  - C. kujihusisha na mihadarati
  - D. wageni kuingia nchini.
42. Ni kwa nini wananchi wanahirizwa kutalii nchi hii?
  - A. Kufahamu vivutio vya utalii.
  - B. Kweza kumwona siniba.
  - C. Kuweza kuleta pesa nyingi.
  - D. Kuweka mikakati imara
43. Mwandishi alitoa kauli kuwa
  - A. wananchi wanastahili kutohimizwa kutalii
  - B. washikadau wanastahili kutohusishwa
  - C. utalii ni sekta muhimu nchini Kenya
  - D. utalii urneendeleza ukahaba na mihadarati.
44. Makala haya yanazungumzia
  - A. utalii nchini
  - B. dawa za kulevya
  - C. uchumi wetu
  - D. washikadau wote.
45. Neno 'washikadau' limetumika katika ufahamu kumaanisha
  - A. watalii pekee
  - B. walimu pekee
  - C. wakulima wote wanaohusika
  - D. wanaohusika katika sekta.
46. Teua kundi ambalo lina vivutio ambavyo hupatikana nchini Kenya
  - A. Ng'ombe, Simba, milima ya Kenya.
  - B. Mbuga, Mito, Milima.
  - C. Bonde la tifa, Mazaa, Jumba la kitaifa.
  - D. Nyumba, Misitu, Mbuni.
47. Mambo ambayo huathiri sana vijana kutokana na utalii ni
  - A. pesa za kigeni na ukahaba
  - B. utevi na mihadarati
  - C. mambo ya anasa na mihadarati
  - D. unywaji pombe haramu na ukahaba.
48. Si kweli kusema kuwa
  - A utalii haujanua sekta nyingi nchini
  - B. utalii umeendeleza mihadarati na ukahaba
  - C. watalii pia ni washikadau
  - D. utalii si uti wa mgongo wa nchi yetu.
49. Shida sugu ya utalii nchini
  - A. kuenea kwa uhayawani nchini
  - B. mihadarati, ukahaba na maadili potofu
  - C. kutowahusisha washikadau katika miradi
  - D. kutowahimiza wananchi kutembelea vituo.
50. Kichwa mwafaka cha habari hii ni
  - A. Sekta ya utalii
  - B. Uchumi wa nchi
  - C. Utumiaji wa mihadarati
  - D. Washikadau wa nchi.

# NAIROBI COUNTY MOCK TRIAL KCPE 2014

## MATHEMATICS

Powered by: [www.eeducationgroup.com](http://www.eeducationgroup.com)

Time: 2 Hours .

**INSTRUCTIONS TO CANDIDATES (Please read these instructions carefully).**

1. You have been given this question booklet and a separate answer sheet. The question booklet contains 50 questions.

2. Do any necessary rough work in this booklet.

3. When you have chosen your answer, mark it on the **ANSWER SHEET**, not in the question booklet.

### HOW TO USE THE ANSWER SHEET

4. Use an ordinary pencil.

5. Make sure that you have written on the answer sheet:

**YOUR INDEX NUMBER**

**YOUR NAME**

**NAME OF YOUR SCHOOL**

6. By drawing a dark line inside the correct numbered boxes mark your full index (i.e. School Code Number and the three-figure Candidate's Number) in the grid near the top of the answer sheet.

7. Do not make any marks outside the boxes.

8. Keep your answer sheet as clean as possible and **DO NOT FOLD IT**.

9. For each of the questions 1 - 50 four answers are given. The answers are lettered A, B, C and D. In each case only **ONE** of the four answers is correct. Choose the correct answer.

10. On the answer sheet the correct answer is to be shown by drawing a dark line inside the box in which the letter you have chosen.

### Example

In the Question Booklet:

11. Mwaura and Henry shared money in the ratio 5:3. Mwaura got Shs. 1800 more than Henry.

How much did Henry get?

A. sh. 1080

B. sh. 3000

C. sh. 675

D. sh. 2700

The correct answer is D.

On the answer sheet:

1. [A] [B] [C] [D]

11. [A] [B] [C] [D]

21. [A] [B] [C] [D]

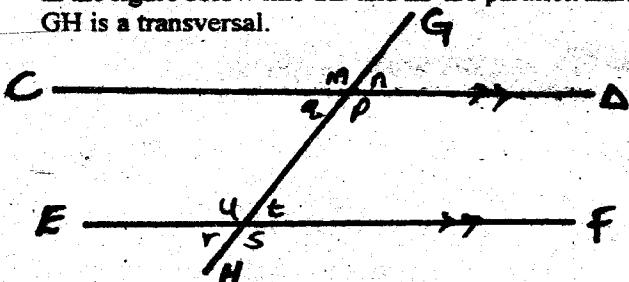
41. [A] [B] [C] [D]

In the set of boxes number 11, the box with letter D printed in it is marked.

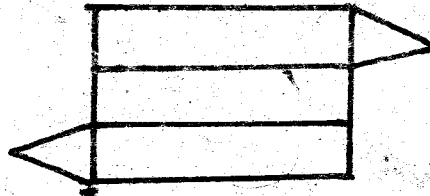
11. Your dark line **MUST BE** within the box.

12. For each question **ONLY ONE** box is to be marked in each set of four boxes.

This Question Paper consists of 4 printed papers

- What is 30021 01 7 written in words?  
A. Thirty million twenty one thousand and Seventeen.  
B. Three hundred million two hundred and ten and seventeen.  
C. Thirty million two hundred and ten and seventeen.  
D. Three hundred million twenty one thousand and seventeen.
- Joan divided the total value of digit 6 by the total value of digit 5 in the number 367 502. What answer did she get?  
A. 1.2      B. 12      C. 120      D. 1200
- What is 57.991 round off to the nearest tenths?  
A. 58.0      B. 58      C. 58.001      D. 57.0
- What is the value of  $2.4 - 0.04$  of  $10 - 0.4 \div 0.2$ ?  
A. 0.4      B. 1.4      C. 4.0      D. 0
- Which one of the following expressions is NOT correct?  
A.  $13.02 + 40.43 = 80.38 \div 26.93$       B.  $\frac{7}{9} > \frac{5}{6}$   
C.  $207 + 34 > 163 + 76$       D.  $0.025 < 0.25$
- What is the value of  $\frac{1}{5} - \frac{2}{5}$  of  $\frac{5}{6} + \frac{1}{2} \div 1\frac{1}{4}$ ?  
A.  $\frac{17}{30}$       B.  $\frac{11}{30}$       C.  $\frac{7}{30}$       D.  $\frac{1}{30}$
- What is the sum of the next two numbers in the pattern below?  
9, 12, 17, 24, 35  
A. 113      B. 111      C. 65      D. 48
- What is the square root of the number obtained when 169 is multiplied by 4?  
A. 26      B. 52      C. 338      D. 676
- In the figure below line CD and EF are parallel. Line GH is a transversal.  
  
Which one of the following pair of letters represent angles that are NOT equal?  
A. s and p      B. p and u  
C. u and q      D. r and n
- What is the value of  $\frac{2}{3}a(b + 3c)$  when  $a = b - 2$ ,  $b = 3 + c$ ,  $C = 5$ .  
A. 32      B. 46      C. 69      D. 92
- Mama soko bought 20 trays of eggs at sh. 200 per tray and paid sh. 200 for transport to the market. During transportation 15 eggs broke. She sold the rest at sh. 10 per egg. If a tray contains 30 eggs, what percentage profit did she make?  
A. 28      B. 39      C. 41      D. 42.
- An athletics competition started at 7:15 a.m. After 45 minutes, pupils went for a 20 minutes break. The track events then took 45 minutes to end. At what time in 24 hour clock system did the game end?  
A. 2 105 h      B. 0845 h      C. 0905 h      D. 2045h

- The figure below represents the net of a solid.

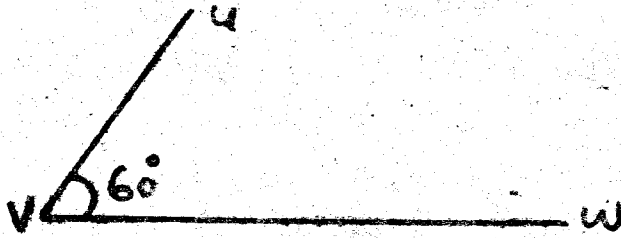


The net is folded to form the solid. What will be the sum of the edges and the vertices?

- A. 6      B. 9      C. 14      D. 15
- The table below shows the number of foreign tourists who visited a game park in a day.

Adult	Children 5-17 yrs	Children under 5 yrs
450	125	142

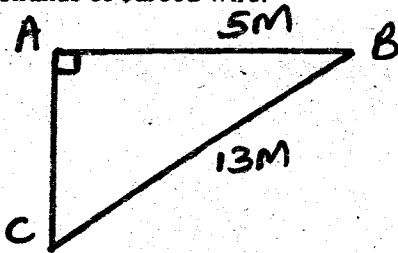
Each adult paid sh. 1200 entry fee while children of 5-17 years paid half as much. Children under 5yrs of age had free entry. How much did the park collect that day?

- A. sh. 540 000      B. sh. 615 000  
C. sh. 625 000      D. sh. 700 200
- Mr. Patel bought 3 bags of cement on Monday, on Tuesday and Wednesday he bought a total of 5 bags. On Friday he bought 100kg more than on Thursday. In total he bought 18 bags. In a pie chart, what angle would represent the amount bought on Thursday if a bag of cement is 50kgs?  
A.  $250^\circ$       B.  $120^\circ$       C.  $100^\circ$       D.  $80^\circ$
  - Two lorries were used to transport stones from a quarry. Each lorry carried 4 tonnes 200kg of stone per trip. Each lorry was to make three trips. After the second trip one of the lorries broke down and did not carry the stones. What was the total mass of the stones transported in kg?  
A. 12600      B. 16800      C. 21 000      D. 25 200
  - A sales lady received a commission of sh. 72 000 after selling goods worth sh. 1 600 000. If a company gives a commission on sales above sh. 200 000. What was he percentage commission offered?  
A. 36      B. 8      C. 4      D. 5L
  - A tailor had three pieces of cloth measuring 60m, 45m, 30m respectively. He cut them into equal smaller pieces to make suits. What could be the largest size that can be cut from the three pieces of cloth?  
A. 15 m      B. 30 m  
C. 180 m      D. 81000 m
  - Mr. Joe paid his three workers for a day's wage. He gave  $\frac{1}{6}$  to the first worker  $\frac{2}{3}$  of the remainder to the second one and sh. 2400 to the third worker. How much money did he have at the beginning?  
A. sh. 21 600      B. sh. 14400  
C. sh. 8 640      D. sh. 2 880
  - The mean mass of four pupils was 54.5kg. When the masses of another pupil and a teacher were included, the mean mass became 55kg. if the mass of the pupil was 26kg less than that of the teacher. What was the mass of the teacher?  
A. 43 kg      B. 57 kg      C. 69 kg      D. 112 kg
  - The diagram below is an incomplete parallelogram UVWX. Complete the parallelogram and draw diagonals YX and UW to meet at C.  


What is the size of the reflex angle UCX?

- A.  $62^\circ$       B.  $118^\circ$       C.  $112^\circ$       D.  $242^\circ$

22. In the year 2011, the price of a packet of milk was sh. 30 while that of a loaf of bread was of the cost of a packet of milk. In 2012 the price of a packet of milk decreased by 10% while that of a loaf of bread increased by 25%. What was the ratio of the price of milk to that of bread?  
A. 5:4    B. 9:10    C. 11:10    D. 10:11
23. A shopkeeper bought 90 bags of beans. She sold 0.8 of the bags and gave 0.5 of the remainder to a refugee camp. How many bags was she left with?  
A. 9    B. 18    C. 45    D. 72
24. The expression  $\frac{2(3x-3)}{8}$  and  $\frac{(x+4)}{3}$  have the same answer. What is the value of x?  
A. 3    B. 5    C. 7    D. 24
25. The diagram ABC below is not drawn to scale. It represents a fish pond that was to be fenced round with 5 strands of barbed wire.

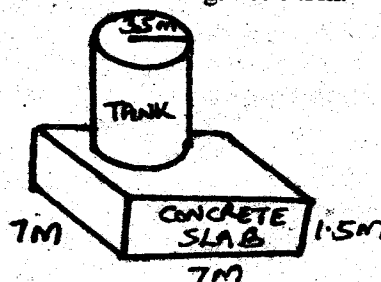


- What was the total length of the wire used in metres?  
A. 30 m    B. 90m    C. 150 m    D. 155
26. A man paid sh. 1200 for three items that he bought in a supermarket. The price of a jacket was twice that of a shirt. While the price of a shirt was sh. 60 more than that of a tie. If the price of the shirt was sh. y. Which one of the following expressions would be used to get the price of the shirt?  
A.  $3y - 60 = 1200$     B.  $4y + 60 = 1200$   
C.  $5y + 60 = 1200$     D.  $4y - 60 = 1200$
27. Mr. White posted two letters each weighing 55g to Tanzania (E.African zone) and another one weighing 305g to Malawi (rest of Africa).

AIR MAIL			
Type of article & maximum weight	Weight steps	countries within E. African zone	countries within the rest of Africa
Letters			
Maximum weight 2kg.	Upto 25g	50.00	65.00
	Over 25g - 55g	100.00	150.00
	Over 55g - 05g	175.00	215.00
	Over 105g - 255g	420.00	480.00
	Over 255g - 355g	585.00	690.00
	Over 355g - 550g	835.00	980.00
	Over 550g - 1kg	1250.00	1455.00
	Over 1kg-2kg	630.00	1900.00

- How much money did he pay at the post office?  
A. sh. 1110    B. sh. 890  
C. sh. 865    D. sh. 790
28. A teacher deposited sh. 60 000 at a bank that paid compound interest at the rate of 10% p.a. After one year, the teacher withdrew sh. 25000 to pay school fees. How much money was in the account at the end of two years?  
A. sh. 41 000    B. sh. 45 100

- C. sh. 47 600    D. sh. 72 000
29. A rectangular plot of land measures 5cm by 2 in. What is the area of the plot in hectares if the scale used on a map is 1:50000?  
A. 25    B. 250    C. 2 500    D. 250 000
30. One hundred and twenty children joined Elimu Bora school in 2013. This was 25% increase over the previous years school population. How many children were there in the school in 2012?  
A. 96    B. 150    C. 270    D. 480
31. Which of the following is NOT a property of a Rhombus?  
A. It has two pair of parallel lines.  
B. All sides are equal.  
C. All interior angles are equal.  
D. Diagonals bisect each other at 90°.
32. Abdile bought the following items to donate to Children's Home. One bag of fruits @ sh. 2600  
Two-2kg packet of rice sh. 240  
100kg of sugar sh. 105  
60 loaves of bread @ sh. 45  
He was given a 5% discount for all his purchases. How much did he pay for the items?  
A. sh. 15466    B. sh. 15922  
C. sh. 16280    D. sh. 1676.0
33. A motorist left town A for town B, 120km away. He took 3hrs to get to town B, 120km away. He then rested for 15 minutes before proceeding to town C at a speed of 80km/h for 45 minutes. What was his average speed for the whole journey?  
A. 120km/h    B. 60km/h    C. 48 km/h    D. 45 km/h
34. A square school plot has an area of 2.25 hectares. The school committee fenced three sides of the school and left one side open. The posts were placed 5m apart. How many posts were used?  
A. 31    B. 9    C. 90    D. 120
35. Fifteen lorries can clear some garbage in 12 days. The local authorities demanded that the garbage be cleared within 10 days. How many more lorries would be required to clear the garbage?  
A. 18    B. 12    C. 6    D. 3
36. Construct triangle ABC in which line BC = 6cm line CA = 9cm and angle ABC 110°. Bisect angle ABC and let the bisector meet line AC at P. What is the length of line PC?  
A. 6 cm    B. 5 cm    C. 4 cm    D. 3cm
37. A cylindrical metal rod has a diameter of 0.7m and a height of 9m. What is the volume of the metal rod in cubic metres correct to two decimal places? ( $\pi = 3\frac{1}{7}$ )  
A. 3.47 m<sup>3</sup>    B. 3.465 m<sup>3</sup>  
C. 19.8 m<sup>3</sup>    D. 20.57 m<sup>3</sup>
38. A train arrived in Mombasa at 5.15a.m after a journey of 6hr40min. At what time had it left Nairobi in 12hr clock system?  
A. 1.25 p.m    B. 1.25 a.m  
C. 10.35 p.m    D. 10.35 a.m
39. The diagram below represent a cylindrical water tank on a concrete slab. The tank had a radius of 3.5m and a height of 5m. The concrete slab had a square base of 7m and a height of 1.5m.



The top surface of the slab was painted black except

the area covered by the tank. What was the area painted black in  $m^2$ ?

- A. 10.5    B. 38.5    C. 40    D. 196.0

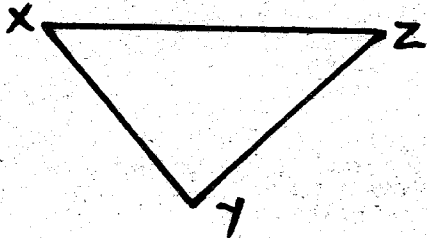
40. The table below shows the distance in kilometres from Mpenda's home to school.

Home	Market		Church		School
$\frac{1}{2}$					
$1\frac{1}{2}$	1				
2	$1\frac{1}{2}$	1			

During Easter, Mpenda woke-up and decided to attend the morning service at the church. He then passed through the market on his way back home. How many kilometres did he cover that day?

- A. 3 km    B.  $3\frac{1}{2}$  km    C.  $4\frac{1}{2}$  km    D. 5 km

41. In the triangle below,  $XY = YZ = 25$  m and  $\angle XZ = 140^\circ$ .



What is the area of the above triangle?

- A.  $84 \text{ cm}^2$     B.  $350 \text{ cm}^2$     C.  $175 \text{ cm}^2$     D.  $168 \text{ cm}^2$

42. A milk trader bought 2400 litres of milk for preparing yoghurt. She used this milk to pack into 2 litre bottles. She also packed 1500 bottles each half litres while the rest were 5 litres bottles. How many bottles did she pack altogether?

- A. 1368    B. 2118    C. 2598    D. 3150

43. Which one of the expressions below is the simplest form of

$$\frac{3(x+3y) + 5x}{4(3x+2y) - 6x}$$

A.  $\frac{4x+9y}{3x+3y}$

B.  $\frac{8x+3y}{8x+9y}$

C.  $\frac{8x+9y}{6x-8y}$

D.  $\frac{8x+9y}{6x+8y}$

44. A group of pupils went for a trip in  $y$  buses. If  $x$  buses carried 45 pupils each. What is the total number of pupils who went for the trip if the remaining buses carried 30 pupils each. Write an expression to show how many pupils went for the trip.

A.  $15(5x - 2y)$

B.  $15(3x + 2y)$

C.  $15(x + 2y)$

D.  $15(2y - 5x)$

45. The cash price of a sofa set is sh. 12000. The hire purchase price is 20% more than the cash price. Patel bought a sofa set on hire purchase by paying a deposit and equal monthly instalment of sh. 900 for eleven months. What deposit did he pay for the sofa set?

A. sh. 4500

B. sh. 9900

C. sh. 14400

D. sh. 16500

46. Musa paid sh. 7200 for a suit after getting a discount of 10% from the seller. He used the discount money to buy pairs of socks at sh. 40 per pair. How many pairs did he buy?

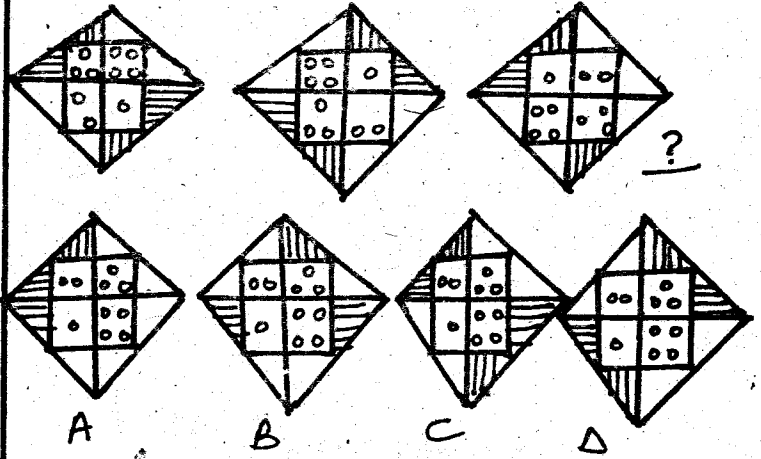
A. 18

B. 20

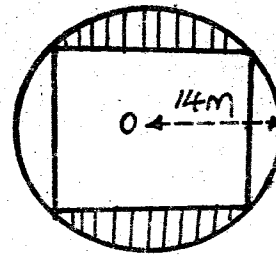
C. 162

D. 180

47. What is the next shape in the pattern below?



48. The diagram below represents a grass lawn which is in the shape of a square in a circle.



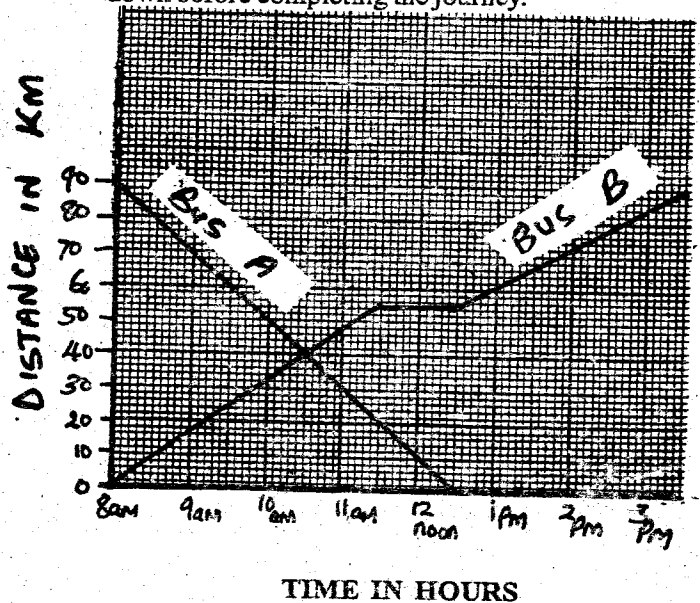
What is the area of the unshaded lawn?

- A.  $504 \text{ m}^2$     B.  $392 \text{ m}^2$   
C.  $196 \text{ m}^2$     D.  $112 \text{ m}^2$

49. The chief of Uwezo area decided to distribute milk to Nursery school children in his area. He had 150 cartons each containing twenty-five packets. How many litres of milk did he distribute?

- A. 15    B. 150    C. 1500    D. 15000

50. The travel graph below shows two buses coming from opposite directions. One of the buses had a break down before completing the journey.



After the two buses met, how long did bus 'B' take before breaking down?

- A. 15 min    B. 30 min    C. 36 min    D. 54 min

Powered by: [www.eeducationgroup.com](http://www.eeducationgroup.com)  
**NAIROBI COUNTY MOCK EXAM**  
**KCPE STD 8 - 2014**  
**MARKING SCHEME**

MATHS		ENGLISH		KISWAHILI		SCIENCE		SOCIAL STUDIES/CRE		
1. A	26.D	1. C	26.D	1. C	26.B	1. A	26.D	1. D	31.B	61. D
2. C	27.B	2. A	27.A	2. A	27.C	2. B	27.A	2. B	32.B	62. A
3. A	28.B	3. D	28.D	3. D	28.A	3. C	28.D	3. B	33.D	63. B
4. C	29.B	4. A	29.A	4. B	29.D	4. A	29.C	4. A	34. C	64. D
5. B	30.D	5. B	30.B	5. B	30.D	5. A	30.B	5. C	35. D	65. A
6. C	31.C	6. D	31.B	6. A	31.A	6. B	31.D	6. B	36. C	66. B
7. A	32.A	7. A	32.C	7. C	32.B	7. B	32.A	7. D	37. B	67. C
8. A	33.D	8. B	33.A	8. D	33.B	8. C	33.A	8. A	38. B	68. D
9. C	34.B	9. C	34.D	9. C	34.D	9. D	34.C	9. D	39. C	69. C
10. B	35.D	10.A	35. C	10. B	35. C	10. D	35. B	10. D	40. D	70. C
11. B	36. B	11. D	36. A	11. A	36. A	11. C	36. D	11. D	41. B	71. A
12. C	37. A	12. A	37. B	12. B	37. C	12. D	37. D	12. C	42. C	72. B
13. D	38. C	13. B	38. D	13. B	38. B	13. A	38. B	13. C	43. D	73. A
14. C	39. A	14. B	39. C	14. D	39. B	14. B	39. A	14. B	44. A	74. A
15. D	40. A	15. C	40. D	15. C	40. B	15. C	40. C	15. C	45. B	75. B
16. C	41. D	16. C	41. B	16. C	41. B	16. D	41. D	16. A	46. B	76. C
17. D	42. B	17. D	42. A	17. B	42. A	17. B	42. AD	17. B	47. A	77. D
18. A	43. D	18. D	43. B	18. D	43. C	18. A	43. C	18 B	48. D	78. B
19. C	44. C	19. D	44. C	19. A	44. A	19. C	44. C	19. D	49. D	79. A
20. C	45. A	20. C	45. D	20. B	45. D	20. D	45. A	20. C	50. B	80. C
21. D	46. B	21. A	46. A	21. D	46. B	21. C	46. A	21. D	51. D	81. D
22. B	47. D	22. C	47. C	22. A	47. C	22. B	47. C	22. A	52. C	82. B
23. A	48. A	23. A	48. A	23. C	48. D	23. A	48. A	23. A	53. A	83. C
24. B	49. C	24. D	49. B	24. D	49. B	24. C	49. D	24. B	54. B	84. D
25. C	50. D	25. B	50. B	25. C	50. A	25. D	50. B	25. B	55. C	85. B
								26. D	56. D	86. C
								27. C	57. A	87. D
								28. C	58. B	88. A
								29. C	59. C	89. D
								30. A	60. B	90. A

**COMPOSITION / INSHA MARKING SCHEME**

**MARKING CRITERIA:**

The composition will be assessed according to the following general guide lines

The Maximum mark will be 40 and the minimum mark 01

Does the script show that the candidate can communicate accurately, fluently and imaginatively in English

**Accuracy ( 16 Marks)**

- |  |  |
|--|--|
| a) Correct tense and agreement of verbs (4marks) | b) Accurate use of vocabulary ( 4 marks) |
| c) Correct spelling order ( 4marks)              | d) Correct punctuation ( 4marks)         |

**Fluency ( 16 Marks)**

- |  |   |
|--|---|
| a) Work in the correct order ( 4marks)       | b) Sentences connected and paragraphs ( 4marks) |
| c) Correct spelling and paragraphs ( 4marks) | d) Ideas developed in logic sequence ( 4marks)  |

**Imagination ( 8marks)**

- |  |
|--|
| a) Unusual but appropriate use of words and phrases (4marks) |
| b) Variety of structure (4marks)                             |

*NB : Please, teachers are requested to scrutinize this marking scheme before use, it is worth*

# NAIROBI COUNTY MOCK TRIAL KCPE 2014

**SCIENCE**

**Time: 1 Hour 40 minutes**

Powered by: [www.eeducationgroup.com](http://www.eeducationgroup.com)

## INSTRUCTIONS TO CANDIDATES (read these instructions carefully).

1. You have been given this question booklet and a separate answer sheet. The question booklet contains 50 questions.
2. Do any necessary rough work in this booklet.
3. When you have chosen your answer, mark it on the **ANSWER SHEET**, not in the question booklet.

### HOW TO USE THE ANSWER SHEET

4. Use an ordinary pencil.
5. Make sure that you have written on the answer sheet:  
**YOUR INDEX NUMBER**  
**YOUR NAME**  
**NAME OF YOUR SCHOOL**
6. By drawing a dark line inside the correct numbered boxes mark your full index (i.e. School Code Number and the three-figure Candidate's Number) in the grid near the top of the answer sheet.
7. Do not make any marks outside the boxes.
8. Keep your answer sheet as clean as possible and **DO NOT FOLD IT**.
9. For each of the questions 1 - 50 four answers are given. The answers are lettered A, B, C and D. In each case only **ONE** of the four answers is correct. Choose the correct answer.
10. On the answer sheet the correct answer by drawing a dark line inside the box in which the letter you have chosen is written.

### Example:

#### In the Question Booklet:

14. The temperature at which a substance freezes is the same temperature at which the substance
- A. boils.
  - B. melts.
  - C. evaporates
  - D. condenses.

The correct answer is B.

#### On the answer sheet:

14. [A] [B] [C] [D]

15. [A] [B] [C] [D]

16. [A] [B] [C] [D]

17. [A] [B] [C] [D]

In the set of boxes number 14, the box with letter **B** printed in it is marked.

11. Your dark line **MUST BE** within the box.
12. For each question **ONLY ONE** box is to be marked in each set of four boxes.

This Question Paper consists of 4 printed papers



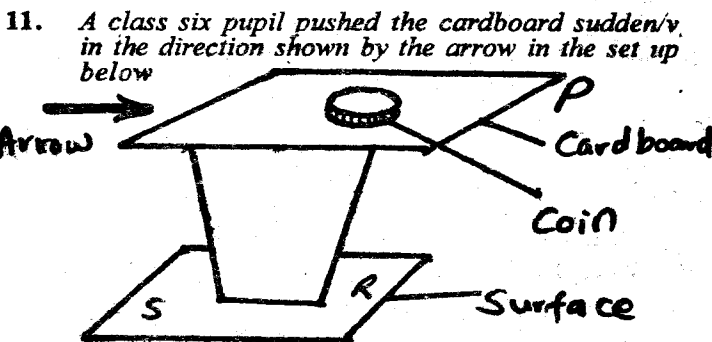
- The following are characteristics found in all animals EXCEPT. They
  - lay, eggs
  - remove wastes
  - move from place to place
  - react to change of the surrounding.
- Which methods of separating mixtures can be used to separate insoluble solids in a liquid?
  - Decanting and evaporation.
  - Filtration and decanting.
  - Sieving and use of magnet.
  - Evaporation and sieving.
- In which of the following activities is friction needed most?
  - Swimming bodies.
  - Flying bodies.
  - Braking a car.
  - ironing clothes.
- Which component of soil is usually investigated by heating soil in a container with covered lid?
  - Air
  - Humus
  - Water.
  - Organic matter.
- In which of the following are the functions of the components of air that makes 21% and 0.03% correctly matched?

21%	0.03%
A. Germination	Making plant food.
B. Burning	Germination.
C. Making proteins	Breathing.
D. Preserving soft drink	In electric bulbs.

- Which of the following statements is TRUE? All
  - reptiles lay unfertilized eggs
  - amphibians have scales
  - birds have varying body temperature
  - mammals give birth to live young ones.
- The following are effects of drug abuse.
  - Truancy
  - Fits
  - Loss of income
  - Withdrawal
 Which of them are social effects?
  - (ii) and (iii)
  - (i) and (iii)
  - (i) and (iv)
  - (ii) and (iv)
- Which one of the following statements is TRUE about inorganic fertilizers? They
  - improve soil structure
  - take long to release nutrients
  - release specific nutrients to the soil
  - enrich the soil for long period of time.
- Natural lighting of the house can be done by use of
  - candles
  - firefly
  - lantern
  - skylights.
- The following are characteristics of different types of soil.
 

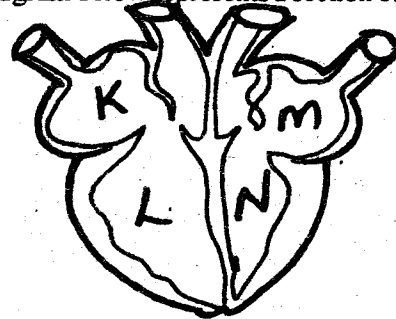
(i) has smooth texture	(ii) has rough texture
(iii) has low drainage	(iv) has low capillarity
(v) cracks when dry	(vi) has large air spaces

 Which of the characteristics are for the type of soil which is MOST LIKELY to be used in making a fish pond?
  - (ii), (iii), (iv)
  - (ii), (iv), (vi)
  - (iv), (v), (vi)
  - (i), (iii), (v)



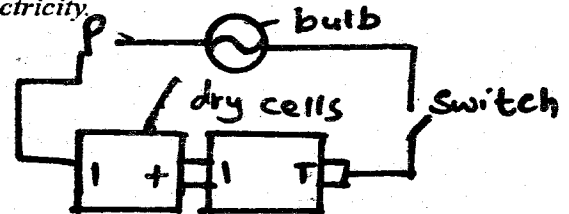
Which is the MOST LIKELY point where the coin will fall?

- A. S      B. R      C. Q      D. P
- The following is a list of animal feeds
    - Sunflower seeds.
    - Lucern.
    - Napier grass.
    - Silage.
    - Bone meal.
 Which pair consists of concentrates only?
    - (ii) and (v)
    - (i) and (iii)
    - (ii) and (iv)
    - (i) and (v)
  - The diagram below represents a section of the human heart.



Which of the following statements about blood circulation is TRUE?

- M receives bright red blood from the lungs.
  - K receives oxygenated blood from the body.
  - N receives deoxygenated blood from the lungs.
  - L pumps oxygenated blood to the lungs.
- Which methods of food preservation given below will all preserve food by dehydrating the foods?
    - Smoking, canning, salting.
    - Low temperature, canning, drying.
    - Use of honey, drying, smoking.
    - Drying, smoking, salting.
  - The following are activities carried out when making a rainbow
    - Place the mirror at the bottom of the basin in a tilted position.
    - Take a basin and half full with water.
    - Place the basin on a stool near a door that allows sunlight in.
    - Tilt the mirror under the water to reflect light on the wall
 Which one of the following is the CORRECT order of the activities?
    - (iii), (iv), (ii), (i)
    - (iv), (iii), (i), (ii)
    - (ii), (iii), (i), (iv)
    - (i), (ii), (iv), (iii)
  - Which one of the following consist only of materials which can be used to model the solar system?
    - Plasticine, softboard, pins, sand.
    - Metallic board, pins, manilla paper, sand
    - Softboard, sand, pins, manilla paper.
    - Softboard, plasticine, pins, manilla paper.
  - The diagram below represents a set up that was used to investigate good and bad conductors of electricity.



Which one of the following materials when placed at point P, the bulb will light?

- Plastic cork.
  - Fresh leaf.
  - Dry stick.
  - Piece of paper.
- Which one of the following pair of processes involved in change of states of matter are CORRECTLY matched?

Releases heat to the surrounding  
 A. Condensation  
 B. Condensation  
 C. Evaporation  
 D. Evaporation

Absorbs heat from the surrounding  
 Melting  
 Freezing  
 Melting  
 Freezing.

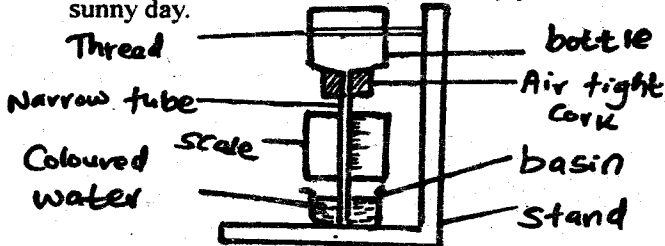
19. The diagram below represents a simple machine in use.



What is the arrangement of pairs X, Y and W respectively?

20. The following statements are TRUE about the effects of heat on matter EXCEPT  
 A. when liquids are heated they evaporate and change into gas.  
 B. when gases are cooled they condense and change into liquid.  
 C. when solids are heated they melt and change into liquid.  
 D. when water is heated it changes into solid.
21. Which list of materials given below are all magnetic materials?  
 A. Tin, iron, silver.  
 B. Copper coin, steel wool, aluminium foil.  
 C. Sewing needle, iron fillings, razor blade.  
 D. Small pieces of copper wire, cobalt, alnico.

22. The diagram below represents a weather instrument constructed by a group of pupils. They put it out on a sunny day.



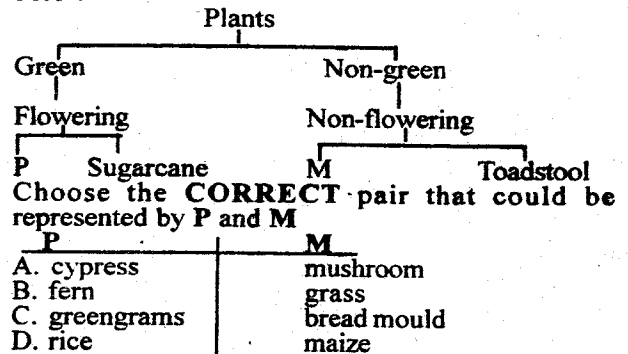
Which one of the following is TRUE about the observation made? The

- A. size of the bottle decreased  
 B. water level in the tube decreased  
 C. water level in the basin decreased  
 D. water level in the cube increased.
23. Which one of the following consists ONLY of substances that float on water?  
 A. Candle wax, bottle top, ice.  
 B. Chalk, coin, clay.  
 C. Feather, ice, piece of wire.  
 D. Candle wax, leaves, a pin
24. The following are proper uses of medicine EXCEPT  
 A. taking medicine for the recommended disease  
 B. medicine should be taken before the expiry date  
 C. taking excess medicine to speed up the healing process  
 D. taking the right dosage.
25. The following are ways of controlling air pollution EXCEPT  
 A. driving vehicles with well maintained engines  
 B. reducing use of farm chemicals  
 C. avoiding the burning of tyres and plastics  
 D. smoking cigarettes in areas that are allowed.
26. The table below shows crop pests and part of the crop attacked.

Pest	Part attacked
Stalkborer	Stems
Weevils	Grains
Cutworms	Grains
Aphids	Leaves

Which pests are NOT CORRECTLY matched with the part of the plant they attack?

- A. Weevils  
 B. Stalkborer.  
 C. Aphids  
 D. Cutworms.
27. The following are methods of soil conservation EXCEPT  
 A. ploughing along the slope  
 B. contour farming  
 C. mulching  
 D. terracing.
28. Which materials given below are correctly classified with their characteristics in their states of matter?  
 Definite shape  
 Expand most when heated  
 A. Stone  
 B. Flour  
 C. Milk  
 D. Paper  
 Kerosene  
 Water vapour  
 Ice  
 Copper coin
29. Study the classification of plants in the chart below



30. The following are fibre crops EXCEPT  
 A. palm tree  
 B. mango  
 C. sisal plant  
 D. cotton.
31. Std 4 pupils went for an educational tour. Each pupil carried packed lunch as shown Pupil Food carried  
 W — maize, rice and cabbage  
 X — chapati, peas and bean  
 Y — rice, ripe bananas and green grams  
 Z — ugali, meat and green bananas  
 Which pupil carried a balanced diet?  
 A. W B. Z C. X D. Y
32. The following are signs and symptoms of a certain waterborne disease  
 (i) Skin rashes. (ii) Abdominal pains.  
 (iii) Fever. (iv) Aches in the muscles and joints  
 The disease described above can be prevented in the following ways EXCEPT  
 A. covering the surface of water with oil  
 B. drinking boiled water  
 C. keeping toilets and latrines clean  
 D. washing fruits thoroughly before eating
33. Which one of the following statements BEST describes hard water?  
 A. Forms scum with soap.  
 B. Forms lather with soap.  
 C. Water with no dissolved minerals.  
 D. Boiled water.
34. Which one of the following BEST describes the asymptomatic stage of HIV and AIDS  
 A. there is sudden loss of body weight  
 B. the body's immunity has been destroyed  
 C. the HIV/virus can be detected in the blood  
 D. the HI V/virus cannot be detected in the blood.
35. Which one of the following consists of soil pollutants?  
 A. Sawdust, polythene papers and herbicides.  
 B. Polythene papers, pesticides and herbicides.  
 C. Sawdust, ashes and oil.  
 D. Oil, organic matter and silage.

36. Which one of the following is CORRECTLY matched with the function.

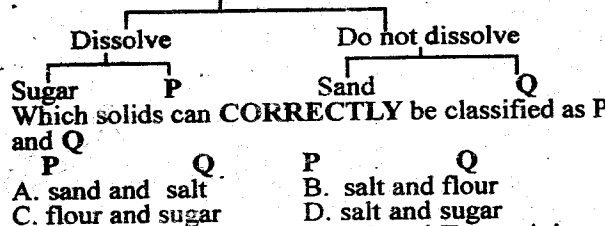
Type of tooth	Function
A. →	tearing
B. →	crushing food
C. →	biting food
D. →	chewing food.

37. The diagram below represents a weather record that was made for 5 days

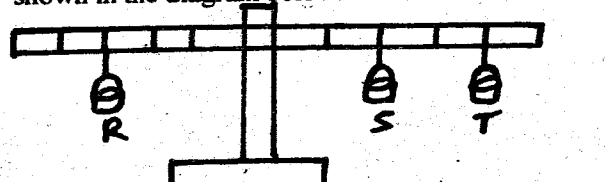
Day	Morning	Afternoon
Monday		
Tuesday		
Wednesday		
Thursday		
Friday		

On which day were nimbus clouds LIKELY to be seen?

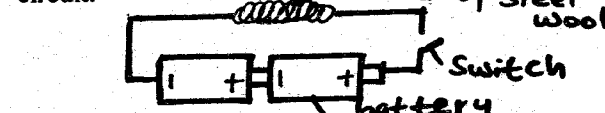
38. The chart below represents a simple Solids



39. Three identical containers R, S and T containing a certain liquid were balanced on a beam balance as shown in the diagram below.

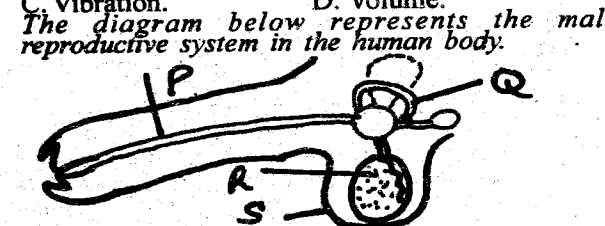


40. Which one of the following statements is correct?  
 A. S and T each contain half as much water as R.  
 B. R contains three times the amount of water in S and T.  
 C. S and T contains twice as much water as R.  
 D. R, S and T contain the same amount of water.



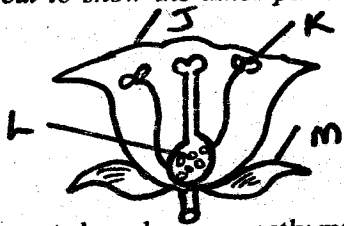
41. Which one of the following energy transformations take place when electricity flows to the strand of steel wool?  
 A. Chemical — Heat — Electrical — Light.  
 B. Electrical — Chemical — Heat — Light.  
 C. Chemical — Electrical — Heat — Light.  
 D. Electrical — Heat — Chemical — Light.

42. A stone was dropped from different heights. Which aspect of sound was being investigated?  
 A. Pollution.      B. Irritation.  
 C. Vibration.      D. Volume.



Urine and sperms are carried out of the male body in

- the part labelled?  
 A. P      B. Q      C. S      D. R
43. The following are adaptations of plants found in dry areas EXCEPT  
 A. thick waxy cuticle      B. needle like leaves  
 C. large leaves      D. deep long roots.
44. The diagram below represents a flower which has been cut to show the inner parts.



Three parts have been correctly matched with their functions EXCEPT

Part	Function
A. J	attract insects
B. K	produce pollen grains
C. L	develop into a fruit
D. M	protect inner parts of the flower.

45. The following are safe ways in the use of simple tools EXCEPT  
 A. movable parts of simple tools should not be greased  
 B. holding a panga properly while chopping wood  
 C. avoid cutting kales without a chopping board  
 D. avoid using a jembe with someone around you.
46. Which of the following uses of water are industrial use ONLY?  
 A. Making pulp, making fountains, making soft drinks.  
 B. Mixing chemicals, cooking, boat racing.  
 C. Skiing, wash coffee berries, clean bottles.  
 D. Transporting, making fountains, making pulp.
47. The diagram below shows parts of a bean seed.

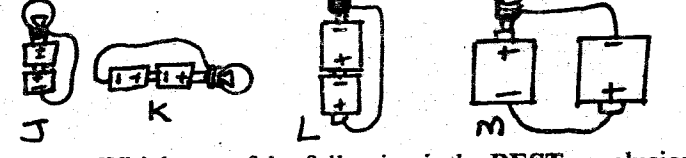


Which part is CORRECTLY matched with its function?

Part	Function
A. F	protects the inner parts.
B. G	stores food.
C. E	develops into a shoot.
D. K	allows water and air into the seed.

48. A road winding up a hill makes work easier by  
 A. increasing the effort distance  
 B. changing direction of the force  
 C. decreasing the load  
 D. decreasing the load distance.
49. Which bird is CORRECTLY match with its adaptation to its feeding  
 A. Grain eater — chicken  
 B. Filter feeder — duck  
 C. Flesh eater — ostrich  
 D. Nectar feeder — Sunbird

50. There are different ways in which we can arrange circuit.



Which one of the following is the BEST conclusion from the arrangements shown above  
 A. only K will light  
 B. J, K, L, M will light  
 C. only K and M will light  
 D. only J and L will light.

# NAIROBI COUNTY MOCK TRIAL KCPE 2014

## SOCIAL STUDIES & RELIGIOUS EDUCATION

Time: 2 Hours 15 minutes

Powered by: [www.eeducationgroup.com](http://www.eeducationgroup.com)

### READ THESE INSTRUCTIONS CAREFULLY

1. You have been given this question booklet and a separate answer sheet. The question booklet contains 50 questions.
2. Do any necessary rough work in this booklet.
3. When you have chosen your answer, mark it on the **ANSWER SHEET**, not in the question booklet.

#### HOW TO USE THE ANSWER SHEET

4. Use an ordinary pencil.
5. Make sure that you have written on the answer sheet:  
YOUR INDEX NUMBER  
YOUR NAME  
NAME OF YOUR SCHOOL
6. By drawing a dark line inside the correct numbered boxes mark your full index (i.e. School Code Number and the three-figure Candidate's Number) in the grid near the top of the answer sheet.
7. Do not make any marks outside the boxes.
8. Keep your answer sheet as clean as possible and **DO NOT FOLD IT**.
9. For each of the questions 1 - 90 four answers are given. The answers are lettered A, B, C and D. In each case only **ONE** of the four answers is correct. Choose the correct answer.
10. On the answer sheet the correct answer by drawing a dark line inside the box in which the letter you have chosen is written.

#### Example:

##### In the Question Booklet:

34. Which one of the following government officials is the chief legal advisor to the president?
- A. Chief Justice
  - B. Solicitor General
  - C. Attorney General
  - D. Deputy President

The correct answer is C.

##### On the answer sheet:

31. [A] [B] [C] [D]      32. [A] [B] [C] [D]      33. [A] [B] [C] [D]      34. [A] [B] [C] [D]

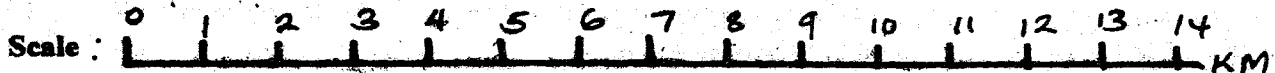
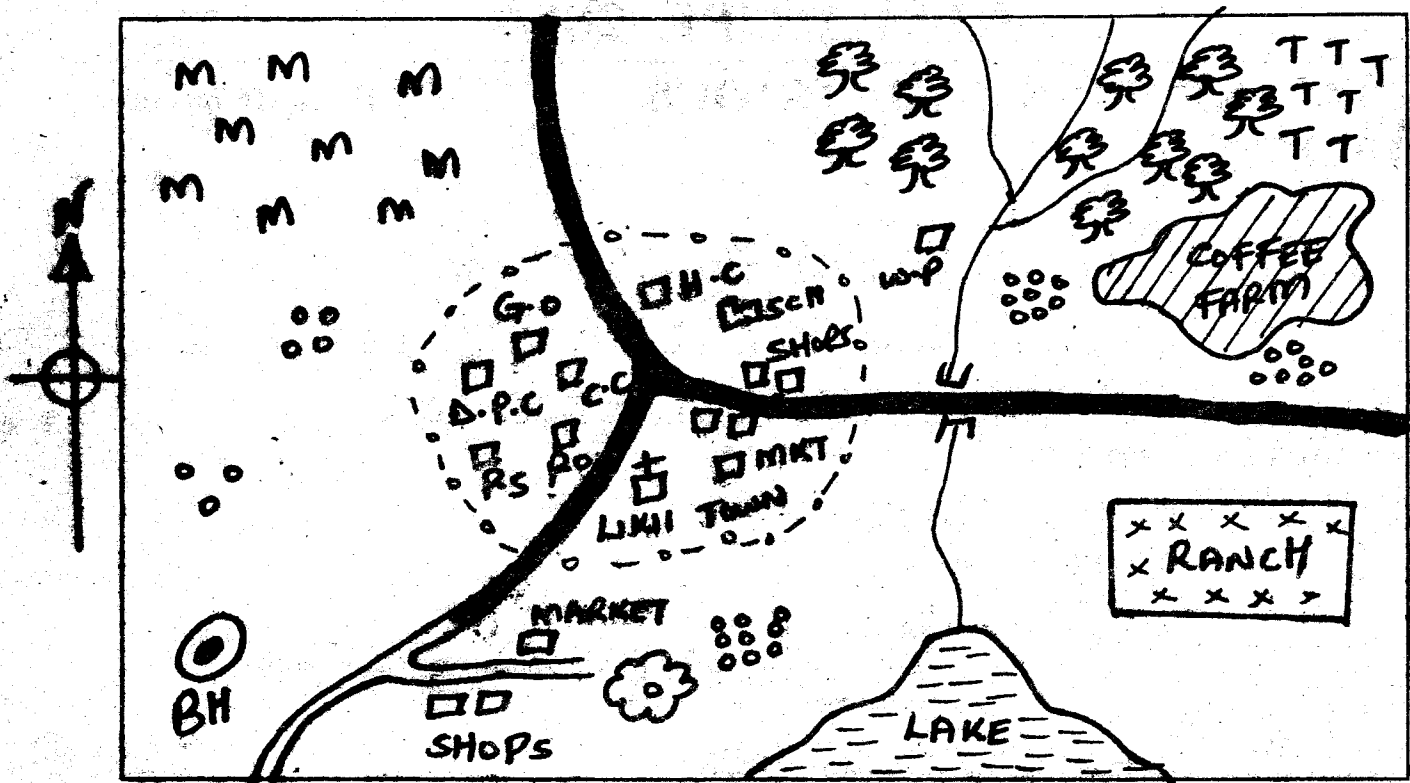
In the set of boxes number 34, the box with letter C printed in it is marked.

11. Your dark line **MUST BE** within the box.
12. For each question **ONLY ONE** box is to be marked in each set of four boxes.

This Question Paper consists of 6 printed papers

**PART 1: SOCIAL STUDIES**

**LIKII AREA**



**KEY:**

	Tarmac road		Permanent building		Maize farm		Deputy commissioners office
	Murram road		Quarry		Tea farm		Police station
	River & Bridge		Houses		Governor office		Post office
	Sub county boundary		Bore hole		County Commissioners office		Health centre
	Forest		Church		School		

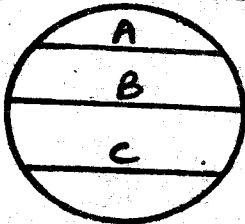
Study the map Likii and answer Question 1 to 7

- The land in Likii area rises from
  - South East to North East
  - East to West
  - North to South
  - South to North.
- What is the approximate area of the coffee farm in the map?
  - 4km<sup>2</sup>
  - 6km<sup>2</sup>
  - 8km<sup>2</sup>
  - 10km<sup>2</sup>
- Which one of the following is the main factor that has led to growth and development of Likii town?
  - Presence of good climate.

- Transport.
  - Presence of administration offices.
  - Presence of minerals.
- Three of the following economic activities are carried out in Likii area except?
    - Fishing.
    - Mining.
    - Trading.
    - Farming.
  - The type of soil that is most likely to be found in North Eastern part of the map is
    - black cotton soil
    - alluvial soil
    - volcanic soil
    - sand soil.
  - Which one of the following statements is true about Likii area?
    - Likii area is densely populated.

- B. The climate to the South Western part of the map is dry.  
 C. Likii area is a district.  
 D. The main economic activity in Likii area is mining.
7. Which one of the following social services is not available in Likii town?  
 A. Educational services. B. Health services.  
 C. Religious services. D. Recreational services.
8. Which one of the following was the dispersal point of the Bantu during migration?  
 A. Shungwaa. B. Congo basin.  
 C. Bah el - Gazei. D. Egypt.
9. Which one of the following was the main role of the Orkoiyot of the Nandi community?  
 A. Settle disputes.  
 B. Preside over marriage ceremonies.  
 C. Lead the warriors in war.  
 D. Give prophecies to his people.
10. Which one of the following statement is true about pastoral farming among the Tswana?  
 A. They mainly keep dairy cattle.  
 B. They keep cattle mainly for sale.  
 C. They grow fodder crops for their cattle.  
 D. Their lifestyle is influenced by the climate.
11. Below are duties of school administration;  
 (i) Approves school development projects  
 (ii) Writes minutes during staff meeting  
 (iii) Monitor teachers class attendance  
 (iv) Writes minutes during board of management in meetings  
 (v) In charge of stationeries in the school  
 (vi) Ensures good standards and traditions of the school are maintained
- Which combinations describe the role of the headteacher?  
 A. ii, vi B. i, iii C. iv, v D. iii, iv
12. The national holiday that is celebrated in Kenya to remember Kenyan heroes both alive and dead is celebrated on?  
 A. 12<sup>th</sup> December. B. 1<sup>st</sup> June.  
 C. 20<sup>th</sup> October. D. 1<sup>st</sup> May.

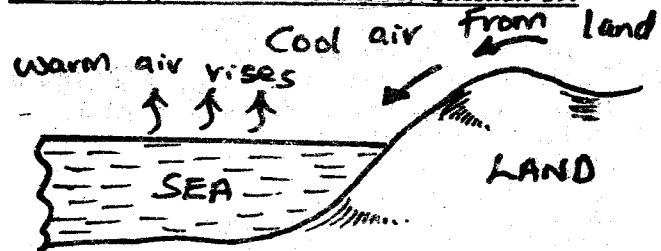
Use the diagram 10 answer the question before



13. In which two of the following month is the sun directly overhead at the places marked A and C respectively?  
 A. December and May. B. March and September.  
 C. June and December. D. February and November.
14. What is the time town P located along longitude 40°E if the time at Greenwich is 12 midnight?  
 A. 9.20 p.m B. 2.40 a.m  
 C. 9.20 a.m D. 2.40 p.m
15. Three of the following are effects of drug and substance abuse. Which one is not?  
 A: Poor eating habits. B. Increase in diseases.  
 C. Financial stability. D. Break - up of marriages.
16. Which one of the following communities was ruled by a chief during the pre-colonial period? -  
 A. The Nyamwezi. B. The Abaanga.

- C. The Ameru. D. The Khoisan.
17. Below are statements about the achievements of an explorer who came to Eastern Africa in the 19<sup>th</sup> century;  
 (i) Visited Eastern Africa twice  
 (ii) Made friends with Kabaka Mutesa I  
 (iii) Confirmed that L. Tanganyika was not the source of River Nile
- The explorer described above is  
 A. John Speke. B. Henry Morton Stanley.  
 C. Vasco Da Gama. D. Dr. David Livingstone.
18. Which one of the following dams in Africa is correctly matched to the country where it is found?  
 A. Seven Forks Dam - Egypt.  
 B. Kariba - Zambia and Zimbabwe.  
 C. Aswan High Dam - Ghana.  
 D. Akosomb Dam - Kenya.

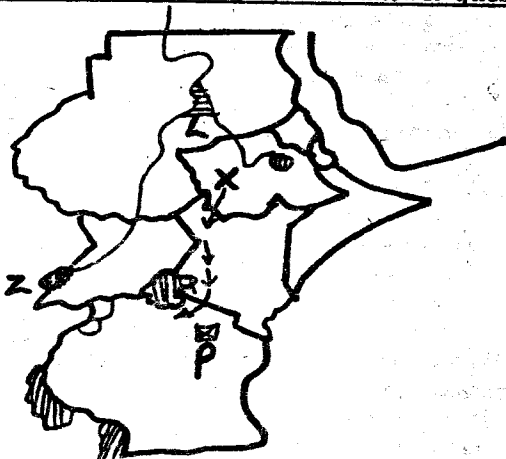
Use the diagram below to answer question 19.



19. Which of the following towns is not likely to experience the conditions shown in the diagram above?  
 A. Kisumu. B. Mombasa.  
 C. Larnu. D. Nyeri.
20. In traditional African societies, movement of large swarms of locusts and butterflies was interpreted to mean  
 A. the coming of strong winds  
 B. the coming of a good harvest  
 C. the coming of a dry season  
 D. the coming of rains.
21. Which one of the following people has citizenship by right?  
 A. A person married to a Kenyan citizen for a period of at least seven years.  
 B. A child adopted by a Kenyan citizen.  
 C. A person born outside Kenya to one parent who is a Kenyan Citizen.  
 D. An eight - year old child or below found in Kenya and whose nationality and parents are not known.
22. Which one of the following statements is not true about population in Germany?  
 A. People over 65 years are fewer.  
 B. Life expectancy is about 80 years.  
 C. There are slightly more females than males.  
 D. Young people are fewer than those of the working population.
23. Koitalel Arap Samoei of the Nandi and Masaku of the Akamba had one thing in common. It is that both  
 A. Prophesied about the construction of the railway.  
 B. Controlled the long distance trade.  
 C. Administered oaths to their people to keep them united.  
 D. treated people using herbal medicine.
24. Zawadi is a business lady in Kitengela town. The tax she pays on the profits made on her business is referred to as

- A. Pay As You Earn      B. Income Tax  
C. Sales Tax              D. Value Added Tax.
25. Which one of the following is the method of administration which was used by the British to administer Northern Nigeria?  
A. Direct rule.              B. Indirect rule.  
C. Assimilation.            D. Paternalism.
26. One of the following is the main reason why the United Nations was formed. Which one is it?  
A. To find lasting peace in the world.  
B. To rebuild countries that had been destroyed.  
C. To assist those who had been afflicted by the war.  
D. To end the second world war and prevent another outbreak of war.
27. It is true to say that an order paper in parliament is a document in which  
A. parliamentary proceedings are recorded  
B. a proposed law is written V  
C. what is to be discussed is written  
D. parliamentary laws are written.
28. The following information was contained in a lesson taught in a class seven in Shauri primary school;  
(i) *Right to own property*  
(ii) *Right to trade*  
(iii) *Right to be employed*  
(iv) *Right to own a bank account*  
Which one of the following human rights did the teacher want the children to learn?  
A. Civil rights.              B. Social rights.  
C. Economic rights.        D. Political rights.
29. Which one of the following traditional African leaders collaborated with European colonial rulers?  
A. Samoei.                    B. Mekatilili.  
C. Lewanika.                D. Samori Toure

Study the map of Eastern Africa and answer questions 30-33



30. Which of the following communities used the route marked X?  
A. Kipsigis, Nandi, Tugen, Sebei.  
B. Keiyo, Pokot, iteso, Ogiek  
C. Marakwet, Sabat, Tugen, Dinka.  
D. Sehei, Tugen, Keiyo, Luo.
31. The town marked P is  
A. the headquarters of African Union  
B. the headquarters of East African Community  
C. the commercial capital of Tanzania.  
D the administrative capital of Tanzania
32. The lake marked Z was formed as a result of  
A. action of rivers              B. down warping  
C. faulting and sinking        D. volcanic action.

33. The cash crop grown in the shaded area marked L is  
A coffee                      B. sisal  
C. tea                          D. sugarcane.
34. Which one of the following statements is true about customary marriage?  
A. It is officiated by a religious leader.  
B. A certificate is issued to the couple.  
C. Payment of dowry made marriage official.  
D. Marriage banns are posted in public places.
35. Three of the following explains why the people of Tanganyika were defeated by the Germans during the Hehe rebellion. Which one does not?  
A. The Africans lacked unity,  
B. The Africans soldiers were poorly trained.  
C. The Germans had better Weapons.  
D. Germany was helped by the British.
36. Which one of the following language groups belong to the people of Southern Africa?  
A. Kanuri, Xhosa, Zulu.  
B. Shona, Ndebele, Hausa.  
C. Sotho, Swazi, Ovambo.  
D. Ilchamus, Wolof, Nyasa.
37. The following are fold mountains in Africa except,  
A. Atlas mountains  
B. Ruwenzori mountains  
C. Drakensburg mountains  
D. Cape ranges.
38. Three of the following are soil conservation measures. Which one is not?  
A. Crop rotation.              B. Monocropping.  
C. Contour ploughing.        D. Building gabions.
39. *The diagram below represents a road sign*



What does the road sign indicate?

- A. No vehicle is allowed to park.  
B. No vehicle should overtake.  
C. There is danger ahead  
D. All pedestrians must stop.
40. Which of the following groups of countries in Africa was colonized by the Germans?  
A. Cameroon, Togo, Mali.  
B. Namibia, Tanganyika, Angola.  
C. Madagascar, Angola, Togo.  
D. Tanganyika, Namibia, Togo.
41. The revolution of the earth has the following effects. Which one is not?  
A. It influences the position of the midday sun.  
B. It causes day and night.  
C. It causes differences in the length of day and night.  
D. It causes the four seasons.
42. Forests in Kenya are mainly protected against destruction because they,  
A. are sources of medicine  
B. make our country beautiful  
C. are sources of rivers arid lakes  
D. are homes to many wildlife animals.
43. The first measure a first aider should take at a scene of an accident is to  
A. call the police for help  
B. call for assistance from the Red cross

- C. stop any bleeding from the victims  
D. ensure there is no further danger from other vehicles.
44. The main problem facing the development of communication systems in Africa is  
A. lack of enough capital  
B. lack of skilled labour  
C. break down of equipment  
D. low population density.
45. Which of the following minerals is not matched correctly with its use?  
A. Salt - used in the manufacture of paper.  
B. Limestone - used in the preservation of fertilizers.  
C. Diatomite - used in the manufacture of soap.  
D. Soda ash - used in water treatment plants.
46. Three of the following are importances of African socialism. Which one is not?  
A. It encourages equality of all people.  
B. It encourages people to disrespect one another. -  
C. it emphasizes Kenyans to care for one another.  
D. It allows Kenyans to do business in a corrupt free society.
47. Below are statements of a political party that was formed in Kenya during the colonial period;  
(i) Was formed in 1960  
(ii) Its aim was to unite the smaller communities  
(iii) Member believed in a federal (majimbo) system of government  
(iv) One of the founder members was Daniel Arap Moi  
The political party described above is  
A. Kenya African Democratic Union (KADU)  
B. Kenya African National Union (KANU)  
C. Kenya People's Party (KPP)  
D. Kenya African Union (KAU)
48. Three of the following skills were taught through apprenticeship in traditional African society except?  
A. Hunting for wild animals.  
B. Harvesting of honey.  
C. Treating the sick using herbs.  
D. Collecting firewood from forests.
49. Which of the following roads run from Mombasa in Kenya to Lagos in Nigeria?  
A. Cotonou - Gao Highway.  
B. Trans - Saharan Highway.  
C. The Great North Road.  
D. Trans - African Highway.
50. The following are highland forests. Which one is not?  
A. Kipkelion. B. Arabuko-sokoke.  
C. Nyandarua Range. D. Kaptagat.
51. The bill of rights in Kenya is found in which chapter of the new constitution?  
A. Thirteen. B. Five. C. Ten. D. Four.
52. The following are responsibilities of children in the family except one. Which one is it?  
A. Respecting their parents and the elderly.  
B. Caring for the family property.  
C. Providing basic needs of the family.  
D. Helping in doing house and farm work.
53. Which one of the following is not true about the National Assembly?  
A. The speaker is elected by citizens  
B. 47 elected women representatives.  
C. 12 members nominated by the political parties.  
D. There are 290 members representing the constituencies.
54. The following are ways of resolving conflicts except one. Which one is it?  
A. Reconciliation. B. Demonstrating.  
C. Mediation. D. Arbitration.
55. Halima was stopped from joining a certain religion by her husband. Which one of the freedoms was she denied? Freedom of  
A. expression B. association  
C. worship D. movement.
56. Three of the following statements are true about independent Electoral and Boundaries Commission. Which one is not?  
A. It recommends the creation of new constituencies.  
B. it prepares and distributes materials needed for elections.  
C. It establishes polling stations in each constituency.  
D. It appoints presidential candidates.
57. The type of democracy where individuals elect their representatives to make decisions on their behalf is called?  
A. Parliamentary democracy.  
B. Delegative democracy.  
C. Nominational democracy.  
D. Participatory democracy.
58. The following are functions of judiciary. Which one is not?  
A. Interpreting the law.  
B. Debates government policies with the aim of improving them.  
C. Hearing and determining cases.  
D. Ensuring that there is justice and fairness.
59. Which among the following is an advantage of pipeline transport?  
A. It is the fastest form of transport.  
B. It is suitable for transporting bulky goods.  
C. It can be laid both on land and in the sea.  
D. The cost of transportation is usually low.
60. The following are duties of the government to its citizens. Which one is not?  
A. Initiating development projects.  
B. Encouraging racism.  
C. Protecting the rights of the people.  
D. Making laws.

## SECTION II

### CHRISTIAN RELIGIOUS EDUCATION

61. In Gen. 1: 1-2, when God created the universe the earth was  
A. full of light.  
B. full of God's creation.  
C. organised and formless.  
D. formless and desolate.
62. One of the following was NOT an authority given to man by God in the Garden of Eden. Which one is it?  
A. Eat from the tree of knowledge.  
B. Guard and cultivate the garden.  
C. Name all the animals and all the birds.  
D. Be in charge of everything that was in the garden.
63. Abraham went to sacrifice his son at mount;  
A. Horeb. B. Moriah. C. Carmel. D. Sinai.
64. God appeared to Moses while he was tending the flock of  
A. Gershon. B. Aaron. C. Eliezer. D. Jethro.



65. In Numbers 20:10-12, Aaron and Moses did not enter the promised land because Moses  
 A. stick the rock twice. B. spoke to the rock.  
 C. made a golden calf.  
 D. was too old to lead the people.
66. Who among the following was known for his patience?  
 A. Saul. B. Job.  
 C. Bildad D. Cain.
67. One of the people listed below acted as a priest, prophet and judge?  
 A. Elijah. B. Aaron.  
 C. Samuel. D. Gideon.
68. Both Elijah and Elisha did the following EXCEPT;  
 A. multiplied oil. B. raised the dead.  
 C. prayed for miracles. D. multiplied oil and flour.
69. Some qualities demonstrated by Jonathan the son of King Saul to his friend David were;  
 A. honesty and selfishness.  
 B. selfishness and reliability.  
 C. honesty, trust and kindness.  
 D. unreliability and selfishness.
70. Identify the list that contains the Gospel books ONLY  
 A. Luke, Romans, Mark, John.  
 B. John, Acts, Timothy, Jude.  
 C. Luke, John, Matthew, Mark.  
 D. Matthew, Mark, Romans, Ephesians.
71. Among the following, who prophesied that Jesus would be born in Bethlehem?  
 A. Micah. B. Hosea. C. Jeremiah. D. Isaiah.
72. The birth of Jesus took place during the rule of Emperor \_\_\_\_\_, who had ordered for a census.  
 A. Herod. B. Augustus. C. Caiaphas. D. Potiphar.
73. The following events took place during the baptism of Jesus. Arrange them in their correct order.  
 (i). Spirit of God coming down like a dove.  
 (ii). Heaven was opened to him.  
 (iii) A voice said from heaven, "This is my own dear son, with whom I am pleased."  
 A. ii, i, iii B. i, iii, ii  
 C. ii, iii, i D. iii, i, ii
74. From which book of the Bible was the Ethiopian Eunuch reading when Phillip met him?  
 A. Isaiah. B. Jeremiah  
 C. Ezekiel. D. Joel
75. "Happy are the pure in heart;....." (Matthew 5:8)  
 A. they shall obtain mercy.  
 B. they will see God.  
 C. they will inherit the earth.  
 D. the kingdom of God belongs to them.
76. The parable that teaches about Christ's return is  
 A. the lost sheep. B. the wedding feast.  
 C. the ten virgins. D. the friend at midnight.
77. Which one of the following miracles was NOT performed by Jesus?  
 A. Cursing the fig tree.  
 B. Raising Jairus daughter.  
 C. Feeding the four thousand.  
 D. Healing the lame man at the beautiful gate
78. The body of Jesus Christ was buried by;  
 A. Simon the Zealot. B. Joseph of Arimathea.  
 C. Simon of Cyrene. D. Cleophas and his friend.
79. The main reason why the seven deacons were chosen was;  
 A. the Greek widows were neglected.  
 B. the native widows were neglected.  
 C. there was a shortage of food supply.  
 D. the orphans were neglected and rejected.
80. Below are the fruits of the Holy Spirit EXCEPT  
 A. self control and humility.  
 B. goodness and kindness.  
 C. interpretation of tongues.  
 D. peace, joy and love.
81. Among the following, which one was considered a taboo in African Traditional Society?  
 A. Polygamy. B. Miscarriage.  
 C. Initiation. D. Incest.
82. The statement that is true about leisure in Traditional African Society is  
 A. leisure makes people lazy and rude.  
 B. leisure makes people socialize and make new friends.  
 C. leisure makes people have evil thoughts and lazy.  
 D. leisure is only good for wealthy people and the idlers.
83. In Traditional African Society, people married MAINLY to:  
 A. become elders. B. become wealthy.  
 C. get children. D. be respectable.
84. According to African Traditional communities and Christianity, children were told stories MAINLY to;  
 A. keep them happy.  
 B. teach meaning of names.  
 C. teach them story telling skills.  
 D. teach them moral values.
85. HIV causes;  
 A. HIV/AIDS. B. AIDS.  
 C. Cancer. D. Diabetes.
86. Some std 6 boys are spending their break time in the boys toilet smoking. What action should Juma, the cabinet secretary for children welfare do?  
 A. Report immediately to the police.  
 B. Tell class teacher and headmaster about it.  
 C. Guide and counsel the boys.  
 D. Expel the boys from school.
87. Mr. Alulu is the director of a company, he has employed some of his sons. What vice is Mr. Alulu practising?  
 A. Injustice. B. Integrity.  
 C. Greed. D. Nepotism.
88. The Kenya government is about to read the annual budget and Ashley has noticed that there is a shortage of sugar in her local kiosk. The shopkeeper could be;  
 A. hoarding the essential goods.  
 B. confiscating the sugar and salt.  
 C. exporting all the sugar and flour.  
 D. smuggling the essential goods.
89. People must stand attention when singing the National Anthem MAINLY;  
 A. for fear of our leaders.  
 B. to respect the colours of the Flag;  
 C. not to be taken to police custody.  
 D. to show respect to the lawful authority.
90. \_\_\_\_\_ translated the English Bible into Kiswahili  
 A. Hannington. B. Dr. Livingstone.  
 C. Dr. Krapf. D. Rebman.