

# K.C.P.E EXCEL SERIES

STD. 8 TERM 3 - 2014

## SCIENCE

READ THESE INSTRUCTIONS CAREFULLY

1. Use an ordinary pencil only.
2. Make sure that you have written on the answer sheet.

Time: 1 Hr 40 Min.

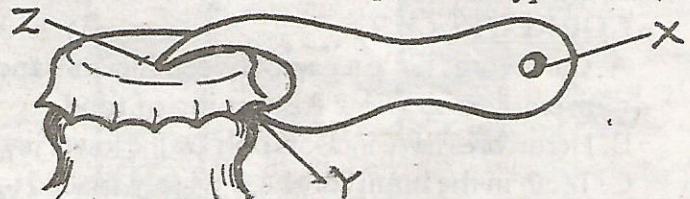
I. YOUR NAME

II. INEX NO.

III. NAME OF YOUR SCHOOL

1. Which one of the following statements is **TRUE** about an air thermometer?  
A. When the temperature rises the level of water in the straw rises  
B. It is made of thin plastic bottle  
C. When the temperature decreases the level of water in the straw rises  
D. The scale is labelled the same way as in liquid thermometer
2. Which one of the following waste products is **NOT** excreted by the kidney?  
A. Excess salt  
B. Carbon dioxide  
C. Toxic substances  
D. Urea
3. Which of the following planet has the greatest gravitational force?  
A. Mercury                      B. Mars  
C. Pluto                          D. Jupiter
4. All the following are ways in which plants depend on other plants. Which one is **NOT**?  
A. Food                              B. Habitat  
C. Shelter                          D. Support
5. Which one of the following organs is **NOT** involved in the digestion of food?  
A. Salivary glands              B. Diaphragm  
C. Pancreas                        D. Ileum
6. Three of the following are ways of managing domestic waste **EXCEPT** \_\_\_\_\_  
A. reducing waste  
B. waste exchange programme  
C. using local authority services  
D. reusing
7. Which one of the following adaptations enables the hydrophyte to float on water?  
A. Thick-waxy cuticle  
B. Succulent stem  
C. Presence of air sacs  
D. Small roots

8. Which one of the following statements about sound is **NOT** correct?  
A. Sound travels faster when the day is cold  
B. A whisper is a soft sound  
C. The loudness or softness of a sound varies with force used to produce it  
D. Sound travels fastest through solids and slowest through gases
9. The diagram below represent a type of a lever.



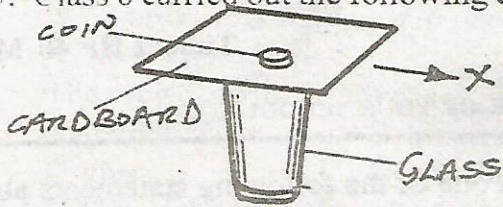
Identify the parts labelled X, Y and Z respectively?

	X	Y	Z
A.	Effort	Fulcrum	Load
B.	Effort	Load	Fulcrum
C.	Load	Effort	Fulcrum
D.	Fulcrum	Load	Effort

10. Which one of the following is **NOT** a way of conserving energy by using it sparingly?  
A. Using public transport whenever possible  
B. Switch off lights when not in use  
C. Use water sparingly to reduce the cost of pumping  
D. Using charcoal for cooking instead of kerosene
11. The following processes show the stages of parturition.  
i) The baby comes out.  
ii) The amnion sac breaks.  
iii) The baby turns upside down.  
iv) The cervix dilates.  
Which one of the following shows the **CORRECT** order in which they take place from the first one?  
A. iv, i, ii, iii                      B. iii, ii, i, iv  
C. iii, iv, ii, i                      D. i, ii, iv, iii

12. i) Has purple flowers.  
 ii) Has yellow fruits when ripe.  
 iii) Has thorns on stem and leaves.  
 The weed described above is **MOST** likely to be \_\_\_\_\_
- A. datura                      B. sodom apple  
 C. black jack                D. mexican marigold

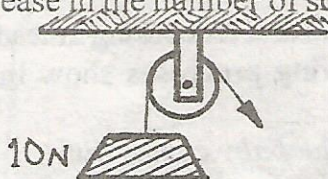
13. Class 6 carried out the following experiment.



The pupils pulled the cardboard suddenly to the directions shown by letter X. What happened to the coin?

- A. The coin moved with the card  
 B. The coin moved in the opposite direction  
 C. The coin fell right inside the glass  
 D. The glass fell down
14. Which one of the following statements is **CORRECT**?
- A. Carnivores have a gap between incisors and premolars to allow for turning of food  
 B. Herbivores have incisors only on the lower jaw  
 C. Teeth in the omnivores are widely spaced to avoid sticking of meat between them  
 D. Herbivores have carnassial teeth for slicing bones
15. Which one of the following parasites destroys wool of a sheep?
- A. Tick                      B. Mite  
 C. Tsetsefly                D. Roundworm
16. Which one of the following is **NOT** an effect of HIV/AIDS on the nation?
- A. Poor health care and congestion in hospitals  
 B. Low agricultural production  
 C. Low standards of living  
 D. Increase in the number of school dropouts

17.



All the following statements are true about the above machine. Which one is **NOT**?

- A. It makes work easier by changing the direction of the force  
 B. The distance covered by the load is equal to the distance covered by the effort  
 C. The effort used is slightly above the load  
 D. The load is always more than the effort used

18. Which one of the following animals belong to the same group as a tick?

A. Mite                      B. Termite  
 C. Ladybird                D. Weevil

19. Which one of the following consists of **ONLY** magnetic material?

A. Tin, razor blade, steel  
 B. Zinc, steel, aluminium foil  
 C. Copper, cobalt, chromium  
 D. Chromium, zinc, nickel

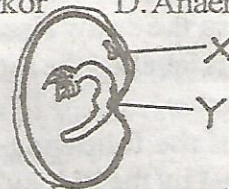
20. Which of the following components of blood prevents the entry of germs into the body?

A. Plasma                      B. White blood cells  
 C. Platelets                      D. Red blood cells

21. Which of the following diseases is caused by lack of both vitamins and mineral salts?

A. Marasmus                B. Rickets  
 C. Kwashiorkor              D. Anaemia

22.



All the following pass through the part marked X except \_\_\_\_\_

A. oxygen                      B. water  
 C. plumule                      D. radicle

23. Which one of the following is **NOT** a preventive measure to control spread of animal diseases?

A. Crossbreeding              B. Quarantine  
 C. Isolation                      D. Vaccination

24. How many sets of teeth does a human being develop in his lifetime?

A. 4                              B. 2  
 C. 20                              D. 32

25. The quantity of matter in an object is measured in \_\_\_\_\_ using \_\_\_\_\_ respectively.

A. mass, beam balance  
 B. weight, spring balance  
 C. kg, spring balance  
 D. kg, beam balance

26. Which method of animal grazing involves use of temporary fences?

A. Strip grazing                B. Tethering  
 C. Zero grazing                D. Paddock

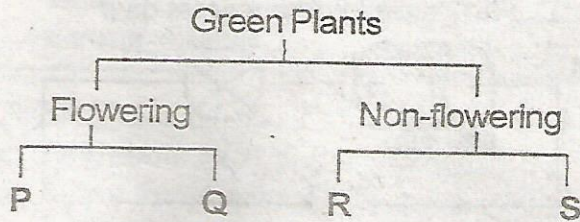
27. Another name for curative drugs is \_\_\_\_\_

A. vaccines                      B. pain killers  
 C. stimulants                      D. antibiotics

28. Which one of the following diseases affects the respiratory system?

A. Malaria                      B. Tuberculosis  
 C. Kwashiorkor                D. Yellow fever

29. Which one of the following is **NOT** a disadvantage of using hard water?
- Waste soap and energy
  - Clogging hot water pipes
  - Some mineral salts contained in it are essential
  - Discolouration of teeth
30. Std. 5 pupils of Shitayi primary school classified plants as shown below.



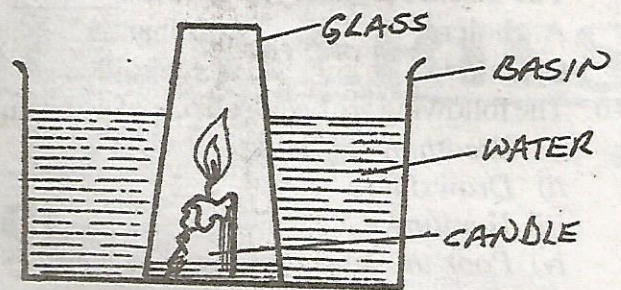
From the chart, the labels P, Q, R, S can best be represented by \_\_\_\_\_

	P	Q	R	S
A.	Algae	Kale	Yeast	Lichen
B.	Cabbage	Grass	Maize	Liverwort
C.	Moss	Fern	Lichen	Algae
D.	Onion	Bean	Lichen	Pine

31. Which one of the following birds is **NOT** correctly matched with its diet?

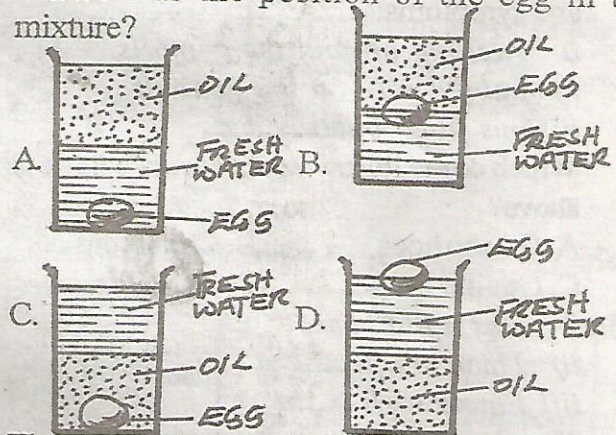
	Bird	Food eaten
A.	Sunbird	Insect
B.	Weaver bird	Grains
C.	Kite	Flesh
D.	Humming bird	Nectar

32. Which of the following immunisable diseases **CANNOT** spread from one person to another?
- Yellow fever
  - Tuberculosis
  - Tetanus
  - Pertussis
33. A 5cm piece of iron sinks when placed in water while a 20cm piece of wood floats in the same water. Why?
- Irrespective of the material, size affect floating and sinking
  - Mass affect floating and sinking
  - Irrespective of material, mass affect floating and sinking
  - Irrespective of size, material is a factor in floating and sinking
34. Std. 6 pupils carried out the following experiment to investigate certain components of air.



Which of the following statements is **INCORRECT** about the set up?

- A fifth of the volume of air supports combustion
  - After sometime the level of water in glass dropped when the candle went off
  - The candle went off after sometime
  - The level of water in the basin dropped when the candle went off
35. A fresh egg sinks in fresh water. Angoche placed a fresh egg in a mixture of oil and fresh water. Where was the position of the egg in the mixture?



36. The temperature at which a substance condenses is the same temperature at which the substance will \_\_\_\_\_
- evaporate
  - freeze
  - cools
  - melts
37. Which one of the following statements is **TRUE** in both liquids and solids?
- They both have indefinite mass
  - Liquids and solids have definite shape
  - Solids and liquids have definite volume
  - Solids and liquids expands most when heated
38. The state in which matter exist depends on \_\_\_\_\_
- weight and pressure
  - temperature and density
  - mass and temperature
  - pressure and temperature
39. i) Itching in the bowels and bladder.  
 ii) Fever.  
 iii) Skin rash.  
 iv) Abdominal pain.  
 v) Blood stained stool and urine.

The disease is most likely to be \_\_\_\_\_

- A. cholera                      B. bilharzia  
C. malaria                      D. typhoid

40. The following are health effects of a certain drug.

- i) *Breathing difficulties.*  
ii) *Drowsiness.*  
iii) *Vomiting.*  
iv) *Poor thinking that leads to memory loss.*  
v) *An overdose may lead to unconsciousness and even death.*

The drug described above is \_\_\_\_\_

- A. heroin                      B. mandrax  
C. glue                      D. cocaine

41. Which of the following shows energy changes when fuel burns?

- A. Chemical → heat → light  
B. Chemical → light → heat  
C. Electrical → heat → light  
D. Electrical → light → heat

42. An S.T.I was characterized by the following signs and symptoms:-

- i) *swelling around the genitals*  
ii) *painful sore on the genitals*  
iii) *pus filled bubo.*

Which of the following disease is best described above?

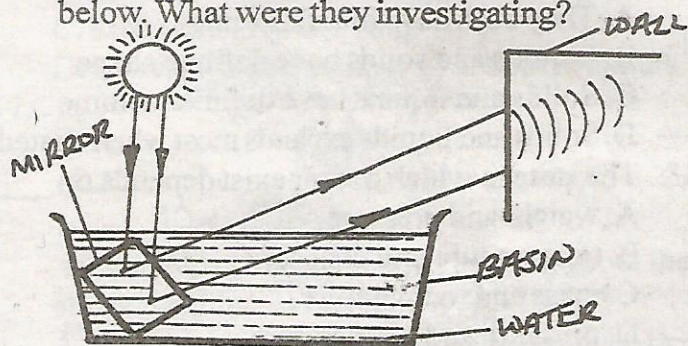
- A. Gonorrhoea              B. Chancroid  
C. Genital herpes        D. Syphilis

43. i) *Has a flat base.*  
ii) *Thick and feathery.*  
iii) *Found high in the sky.*

The cloud described above also \_\_\_\_\_

- A. show heavy rainfall  
B. have no regular shape  
C. indicate fine weather  
D. are found low in the sky

44. Std. 6 pupils carried out the experiment shown below. What were they investigating?



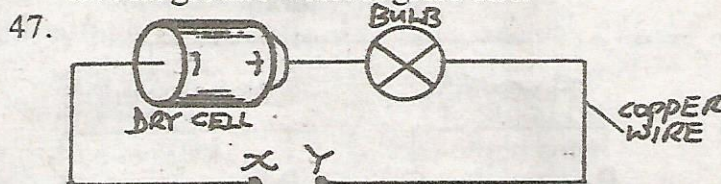
- A. Making rainbow        B. Refraction  
C. Dispersion              D. Reflection

45. Which of the following pairs of deficiency diseases can affect the performance of a pupil in a school?

- A. Marasmus and rickets  
B. Marasmus and kwashiorkor  
C. Anaemia and rickets  
D. Kwashiorkor and anaemia

46. Which one of the following grounds could easily be affected by wind erosion?

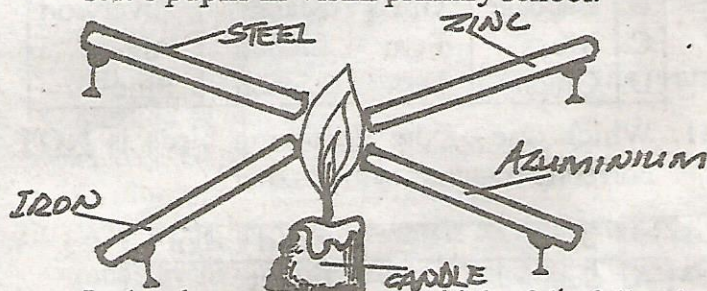
- A. Flat ground with grass on it  
B. Sloppy ground with grass on it  
C. Sloppy ground without grass on it  
D. Flat ground without grass on it



Which of the following materials cannot be placed at point X, Y to make the bulb light?

- A. Piece of wood        B. Graphite  
C. Alluminium        D. Steel wool

48. The following experiment was carried out by std. 8 pupils in Visiki primary school.



In the above experiment which of the following is NOT important?

- A. The thickness of the solid should be the same  
B. The timing should be the same  
C. The amount of wax should be the same  
D. The type of the material must be the same

49. Which one of the following is NOT an effective measure for controlling the spread of HIV/AIDS in a community?

- A. Creating public awareness  
B. Keeping it a secret if a member of a family is diagnosed as HIV - positive  
C. Educating the masses  
D. Conducting campaigns through various media

50. Which one of the following statements is INCORRECT?

- A. Unhygienic practises of handling food can lead to food contamination  
B. Food contamination can lead to food poisoning  
C. Frozen food does not have to thaw before preparation  
D. Moisture and darkness allow growth of micro-organisms