

K.C.P.E SHARPENER

STD. 8 TERM 3 - 2014

SCIENCE

READ THESE INSTRUCTIONS CAREFULLY

- 1 Use an ordinary pencil only.
- 2 Make sure that you have written on the answer sheet.

Time: 1 Hr 40 Min.

I. YOUR NAME

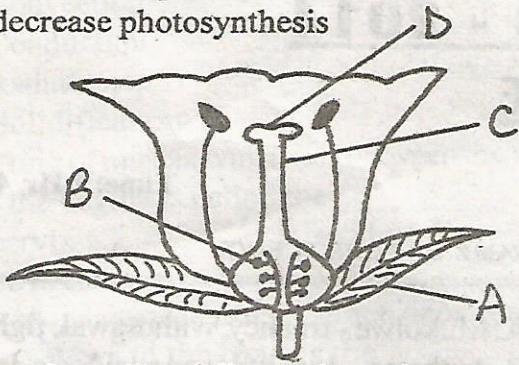
II. YOUR INDEX NUMBER

III. NAME OF YOUR SCHOOL

1. Which of the following crops is **NOT** attacked by stalkborers?
A. Maize B. Sorghum
C. Sugarcane D. Beans
2. Which one of the following is a non-flowering plant?
A. Cactus B. Acacia
C. Wheat D. Pine
3. Which one of the following weeds has yellow flowers and a strong unpleasant smell?
A. Sodom apple B. Black jack
C. Mexican marigold D. Oxalis
4. Bicycle tyres become quite hot after a long journey on a tarmac road. This is caused by ____
A. tyres rubbing against the surface of the tarmac
B. brakes rubbing on the rim of the wheels
C. expansion of air in the tubes
D. friction between the tyres and the wind as the bicycle moves
5. Which among the following pairs of diseases is a child immunized against at birth?
A. Diphtheria and measles
B. Measles and tetanus
C. Tuberculosis and polio
D. Tuberculosis and yellow fever
6. Which one of the following is **NOT** a major factor to be considered when taking medicine?
A. Always follow the doctor's instruction
B. Always check on the expiry date of medicine
C. Always ensure to finish the dose given to you
D. Always check on the manufacturing date of medicine
7. The medicine given to a person to protect him against a certain disease is referred to as ____
A. curative B. preventive
C. pain killer D. supplement
8. Four standard seven pupils were asked by the Science teacher to outline health effects of drug abuse. Who among them gave the right answer?
A. Mukolwe - truancy, withdrawal, fighting
B. Ambetsa - drug induced accidents, insomnia, quarreling
C. Otsimi - withdrawal symptoms, insomnia, lack of concentration
D. Ambongo - family conflicts, truancy, rape
9. Water can be kept cool by storing it in ____
A. a blackened metal pot
B. a wide bottomed earthen pot
C. an uncovered metal tank
D. a covered metal tank
10. Which of the following actions will least help to reduce contaminating the environment?
A. Keeping a car well serviced
B. Setting household rubbish on fire
C. Selling waste paper to a recycling plant
D. Growing grass on bare land
11. Which one of the following activities is unlikely to decrease land pollution?
A. Burying chemical wastes
B. Recycling inorganic wastes
C. Disposing organic wastes on land
D. Burning organic wastes
12. When a candle burns inside an enclosed space such as a jar, the amount of air in the jar ____
A. increases by 0.03%
B. decrease very slightly
C. remains the same
D. decreases by 21%
13. A wet rubber sucker sticks to windows because
A. rubber is very elastic
B. water makes it stick
C. there is very little air under the sucker
D. there is little air outside the sucker
14. Molars are helpful in ____
A. tearing B. grinding
C. holding D. biting
15. Leaves of xerophytes are modified to spines to ____

- A. decrease transpiration
- B. increase transpiration
- C. decrease respiration
- D. decrease photosynthesis

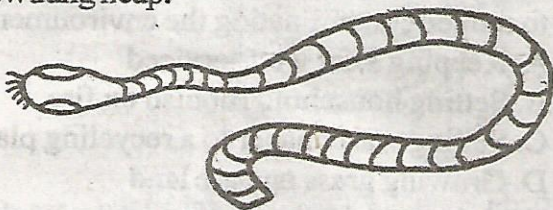
16.



Class 6 pupils of Emunuku primary school observed the above flower in one of the plants in the school compound. Their Science teacher asked them to discuss the process of fertilization. Which part did they conclude that fertilization take place in the flower?

- A. B B. D C. A D. C

17. One early morning Omutimba went to collect cowdung from animal shade. He found the parts of the parasite drawn below in one of the cowdung heap.



What name did Omutimba give to the parasite?

- A. Round worm
- B. Liver fluke
- C. Round worm
- D. Tape worm

18. Which among the following is a common characteristics between aves and pisces?

- A. They breath through the gills
- B. Their bodies are covered by feathers
- C. They both have scales
- D. They both have external fertilization

19. The diagram below shows the beak of a bird. The bird is adapted for eating _____



- A. earthworms
- B. flesh
- C. nectar
- D. grains

Use the diagram below to answer questions that follow.

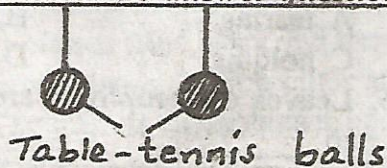


Table-tennis balls

20. The pupils of Emukangu blew air in between he balls and noticed that the balls pushed together instead of moving apart as the pupils expected. Their Science teacher told them the balls moved together because _____

- A. air has resistance
- B. the air on the outer side is not moving thus has a greater pressure
- C. the air on the inside has greater pressure
- D. the pressure inside is greater than the pressure outside thus balls move towards each other

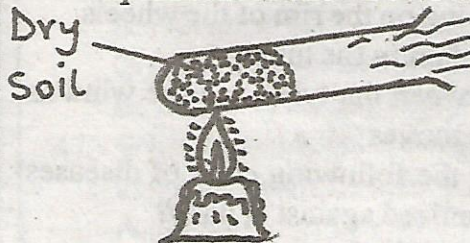
21. Air dissolved in water can be separated by _____

- A. stirring the water
- B. filtering
- C. condensation
- D. warming the water

22. Why is lathering difficult in hard water than in soft water? Because _____

- A. hard water is mixed with mineral salts
- B. it is difficult for dissolved substances to combine with soap
- C. it is not good for washing
- D. it is good for washing

23. After sampling a topic in Science, standard 8 pupils of Imanga primary performed an experiment as shown below.



The best conclusion of the experiment was _____

- A. the soil sample must have been loam
- B. the soil sample contains gravel
- C. the soil sample contains water
- D. the soil sample contains air

24. Mr. Makale asked his standard 5 pupils whether soil contains air. Pupils said "yes" and gave their suggestions to prove their answers.

Keya:- Cover an earthworm with soil for 20 minutes to see whether it would die.

Anungo:- Shake a sample of soil with water and see whether living organisms float on top.

Okwako:- Take 3 soil samples in a test tube and deep them in a basin with water to see in which one water rises fastest.

Owano:- Put dry soil in a container then add water.

Which pupil gave the BEST suggestion?

A. Keya B. Anungo C. Okwako D. Owano

25. Which of the following planets has the highest number of moons?

A. Mars B. Saturn C. Jupiter D. Uranus

26. Which one of the following instruments commonly observed in the airstrips provides important information to a pilot before landing or taking off?

A. Windvane B. Raingauge
C. Windsock D. Anemometer

27. The foods which should not be preserved by freezing because their colour and flavour will be affected are _____

A. avocados and bananas
B. cabbages and mutton
C. fish and chicken
D. veal and tomatoes

28. The following are signs of a deficiency disease:-

i) *finger nails, eyelids and tongue appear whitish.*

ii) *child becomes tired quickly.*

iii) *child feels weak and has no energy to play.*

iv) *the heart beats rapidly.*

The above are signs of _____

A. kwashiorkor B. marasmus
C. anaemia D. rickets

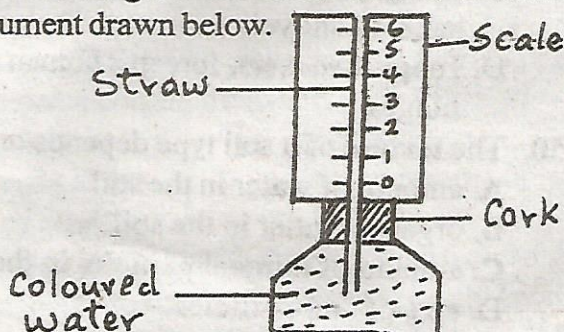
29. In electric circuits, a fuse is used to _____

A. protect us from getting a shock
B. prevent over-heating of wires when excessive current flows
C. create a short-circuit
D. complete the circuit

30. Which one of the following does NOT function the same way as a bicycle dynamo when used to produce electricity?

A. Hydro-electric generator
B. Car battery
C. Diesel generator
D. Wind driven turbines

31. Omuroka went to visit his father who works as a meteorologist. He then saw a weather instrument drawn below.



The instrument works on the principle that _____

A. air occupies space
B. liquids expand on heating
C. liquids have weight
D. air expands on heating

32. Which one of the following groups consists of only foodstuffs that are used for body building and repair?

A. Eggs, peas, milk
B. Rice, oranges, meat
C. Wheat, fish, maize
D. Beans, potatoes, groundnuts

33. Which of the following diseases is likely to affect children whose parents are suffering from HIV/AIDS and are not able to provide enough nutritional requirements to their family?

A. Rickets B. Kwashiorkor
C. Marasmus D. Anaemia

34. Which of the following is NOT a method of preserving fish?

A. Pasteurization B. Drying
C. Smoking D. Salting

35. Milk that has been left over by a baby should not be given back to the baby unless it _____

A. was warmed again
B. had been kept in a refrigerator
C. was still kept in the bottle
D. had been bought from a dairy

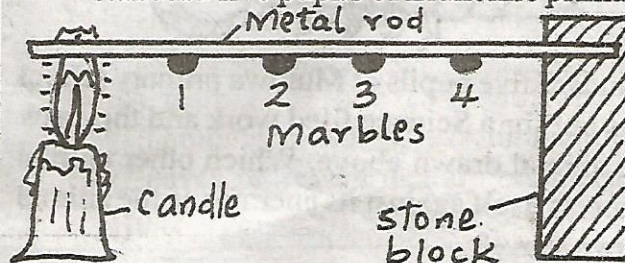
36. Standard six pupils of Ematawa primary were asked by their Science teacher to move into a dark room and light a candle as shown below.



What conclusion did they make from the practical lesson?

A. Light travels in a straight line
B. Light can be refracted
C. Light travels in all directions
D. Light is a mixture of colours

37. The experiment below was performed by standard five pupils of Elukokho primary.



What aspect of heat transfer were they investigating?

- A. Convection
- B. Conduction
- C. Radiation
- D. Solidification

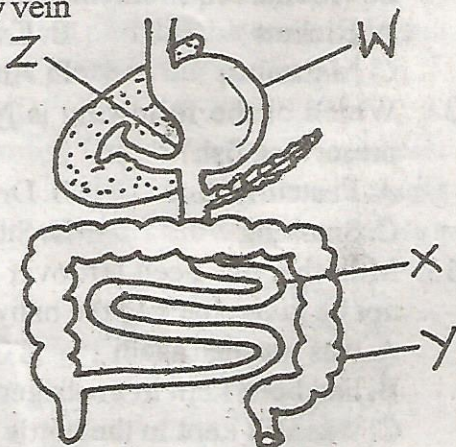
38. The ring of muscle which lies between the uterus and the vagina is called the _____

- A. cervix
- B. oviduct
- C. birth canal
- D. womb

39. The blood vessel through which deoxygenated blood flows to the heart is the _____

- A. aorta
- B. pulmonary artery
- C. vena cava
- D. pulmonary vein

40.



In which part labelled WXYZ does absorption of water take place?

- A. W
- B. Z
- C. Y
- D. X

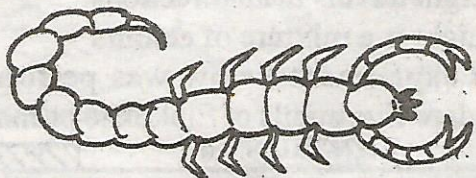
41. Which one among the following is NOT a sign of ill-health in livestock?

- A. Stunted growth
- B. Reduced yields
- C. Loss of weight
- D. Wet muzzle

42. Which one of the following is NOT a type of rotational method of grazing?

- A. Herding
- B. Paddock grazing
- C. Tethering
- D. Strip grazing

43.



Standard five pupils of Muluwa primary school was out for a Science filed work and they saw the animal drawn above. Which other animal protects itself against its enemies as the animal drawn above?

- A. Millipede
- B. Bee
- C. Slug
- D. Grasshopper

44. Which one of the following methods is efficient in removing permanent hardness in water?

- A. Boiling
- B. Distillation
- C. Adding washing soda and stirring water well
- D. Adding two tea spoon full of table salt to water and stirring

45. Omondi noticed the following symptoms in his child:

- violent diarrhoea
- vomiting
- severe abdominal pain
- dehydration

Which one of the following methods can least control the disease?

- A. Washing hands after changing baby's nappies
- B. Boiling or treating water for drinking
- C. Keeping latrines and toilets clean to keep off flies
- D. Wearing gumboots and rubber gloves when walking through in stagnant fresh water

46. Which one is an advantage of using hard water?

- A. Wastes soap
- B. Not good for washing
- C. It is good for our health
- D. It desposites fur in pipes and boilers

47. What force makes a mango to drop from a tree to the ground?

- A. Inertia
- B. Gravity
- C. Weight
- D. Acceleration

48. Which part of the wheelbarrow is friction NOT required?

- A. Handle
- B. Load cabin
- C. Axle
- D. Stand

49. Which group of levers are in the same class?

- A. Door hinges, human foot, nut cracker, tweezers, tongs
- B. Forceps, crowbar, tweezers, pincers
- C. Tongs, tweezers, fishing rod, charcoal handler, shovel
- D. Tongs, tweezers, forceps, human arm, door hinges

50. The texture of a soil type depends on the _____

- A. amount of water in the soil
- B. organic matter in the soil
- C. amount of mineral particles in the soil
- D. size of soil particles