

PENPLUS SCHOOL BASED EVALUATION TEST

PENPLUS
MK-3

STD 7 - TERM 3 - SCIENCE

Time: 1 Hr 40 Mins

READ THESE INSTRUCTIONS CAREFULLY

- Use only an ordinary pencil
- Make sure that you have written on the answer sheet -
(I) YOUR NAME (II) NAME OF YOUR SCHOOL
- For each question show the correct answer by drawing line in the brackets in which the letter you have chosen is written.

1. Which one of the following crop pest is **CORRECTLY** matched to the damage it causes?

Pest	Damage
------	--------

- | | |
|----------------|--------------------------------------|
| A. Cutworm | → makes holes in leaves of cereals |
| B. Aphids | → cut stems of young vegetables |
| C. Weevils | → bore holes in grains |
| D. Stock borer | → sucks juice from vegetables leaves |

2. Which of the following pets is the most dangerous to a farmer's field?

- | | |
|-----------------|-----------|
| A. Locusts | B. Aphids |
| C. Weaver birds | D. Mice |

3. Which of the following plants feed on insects it is the _____

- | | |
|-----------------|-----------------|
| A. fodder plant | B. sundew plant |
| C. money plant | D. wheat plant |

4. Plants that depend on decaying plants for food are called:-

- | | |
|---------------|----------------|
| A. Mesophytes | B. Hydrophytes |
| C. Megaphytes | D. Saprophytes |

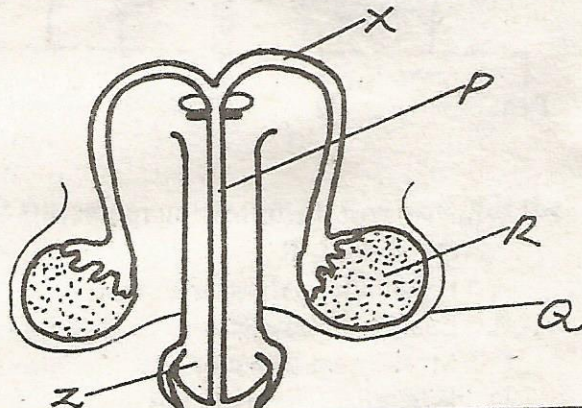
5. Artificial teeth are also called:-

- | | |
|---------------|--------------------|
| A. dentures | B. permanent teeth |
| C. milk teeth | D. deciduous teeth |

6. Which of the following is **NOT** used for cooking?

- | | |
|-------------------|----------------------|
| A. Paraffin stove | B. Three stand stove |
| C. Gas cooker | D. Immersion heater |

Use the diagram to answer questions 7 and 8.



7. The male reproductive cells are produced in the part marked:-

- | | | | |
|------|------|------|------|
| A. Q | B. R | C. Z | D. X |
|------|------|------|------|

8. Sperm pass to the outside of the penis through part marked:-

- | | | | |
|------|------|------|------|
| A. P | B. X | C. Z | D. Q |
|------|------|------|------|

9. Which one of the following is **NOT** a common communicable disease?

- | | |
|-----------------|--------------|
| A. Tuberculosis | B. Small pox |
| C. Flue | D. Measles |

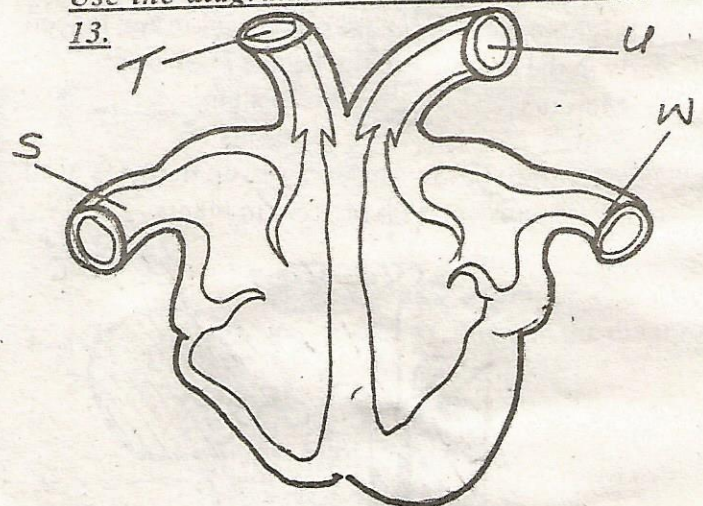
10. Which one is **NOT** a narcotic drug?

- | | |
|----------|------------|
| A. Bhang | B. Mandrax |
| C. Opium | D. Alcohol |

11. Which of the following is the second stage of HIV infection?

- | | |
|-----------------------|--------------------|
| A. Symptomatic stage | B. Window stage |
| C. Asymptomatic stage | D. Full blown AIDS |

Use the diagram to answer questions 12 and 13.



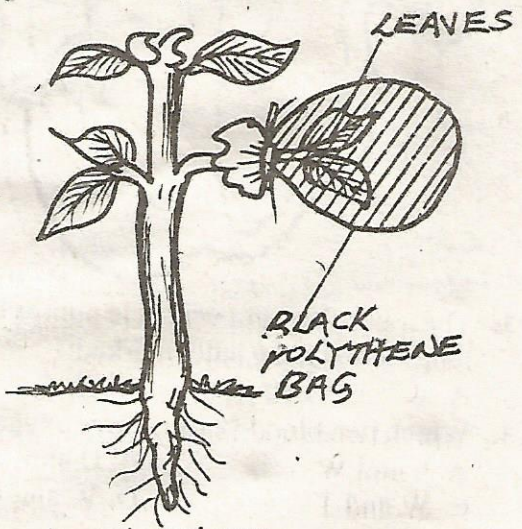
12. The muscular right ventricle pumps blood into the lungs through the letter marked:-

- | | | | |
|------|------|------|------|
| A. W | B. S | C. T | D. U |
|------|------|------|------|

13. Which two blood vessels carry oxygenated blood?

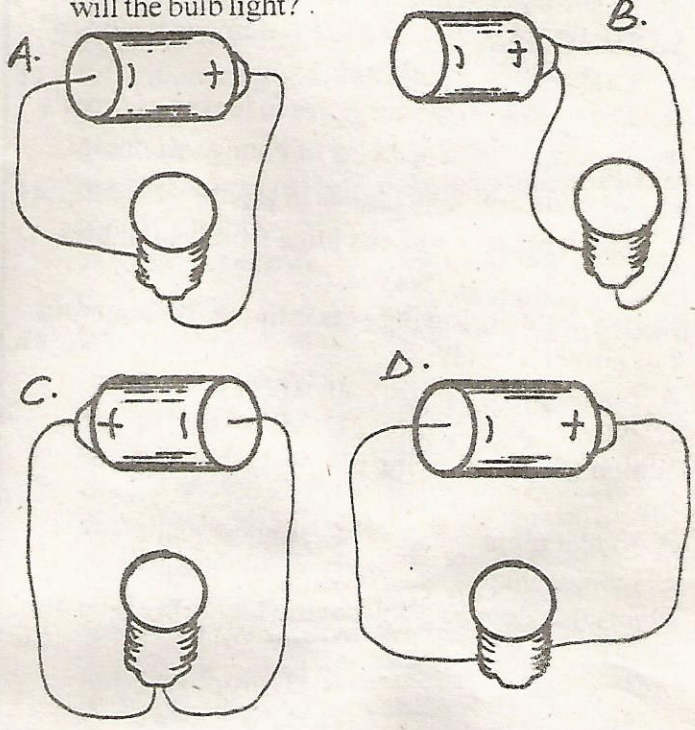
- | | |
|------------|------------|
| A. S and W | B. U and T |
| C. W and T | D. W and U |

14. All the following happen during inhalation. Which one **DOES NOT**?
- A. Ribs move downwards
 - B. Lungs expand
 - C. Pressure decreases
 - D. Diaphragm flattens
15. Chewed food is rolled in small round balls called:-
- A. Bronchus
 - B. Boluses
 - C. Bits
 - D. Bobs
16. Which of the following is the best method of re-using water that has been used to wash clothes?
- A. Watering crops near the house
 - B. Cleaning the house
 - C. Giving goats to drink
 - D. Using it for bathing
17. Some animals like monkeys and birds get food and _____ from plants in the environment.
- A. air
 - B. water
 - C. warmth
 - D. shelter
18. The following are characteristics of a certain cloud.
- (i) Thick white featherly clouds
 - (ii) Made up of rounded masses
 - (iii) Have a flat base
 - (v) Are common in fine weather
- Which cloud had the above characteristics?
- A. Nimbus
 - B. Cirrus
 - C. Cumulus
 - D. Stratus
19. The moon has different _____ and size at different times of the month.
- A. colours
 - B. shapes
 - C. movement
 - D. faces
20. A bright object which does not twinkle and is seen early in the morning in the East is known as:-
- A. Mercury
 - B. Planets
 - C. Star
 - D. Venus
21. The diagram below shows a set-up that was used to investigate a certain process in plants.

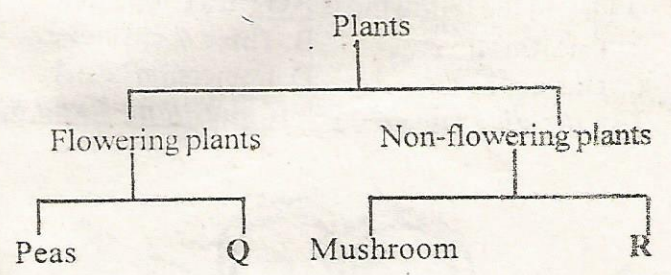


- The process investigated was:-
- A. photosynthesis
 - B. Absorption
 - C. Evaporation
 - D. Transpiration

22. Which one of the following statement is **NOT TRUE** about electricity?
- A. Electricity can be changed to other forms of energy
 - B. Electricity is a form of energy
 - C. A bulb is a source of electricity
 - D. Lighting is visible electricity
23. Three of the following are harmful non-green plants **EXCEPT:-**
- A. Ringworms
 - B. Yeast
 - C. Athletes foot
 - D. Dandruff
24. Which of the electric circuits shown in the set-ups will the bulb light?



25. The chart below shows a simple classification of plants.



- Which one of the following represents Q and R?
- | | |
|----------|----------|
| Q | R |
| A. Fern | Algae |
| B. Bean | maize |
| C. Moss | pawpaw |
| D. Wheat | cypress |

26. Class seven pupils listed ways of polluting water as follows:

- Group 1 - washing and bathing at water sources
- 2 - spills from water tankers
- 3 - human waste in water sources
- 4 - rearing fish in a dam

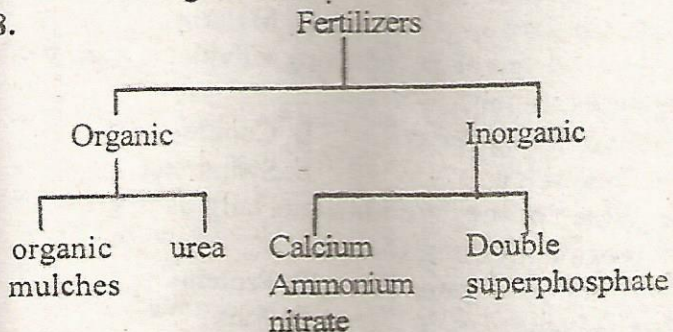
Which among the groups was not correct?

- A. Group 4
- B. Group 2
- C. Group 1
- D. Group 3

27. One of the following is a method of conserving water which one is it?

- A. Leaving water tap running and no one is using the water
- B. Leaving leaking pipes unrepaired
- C. Putting water in pots for future use
- D. Building cowsheds

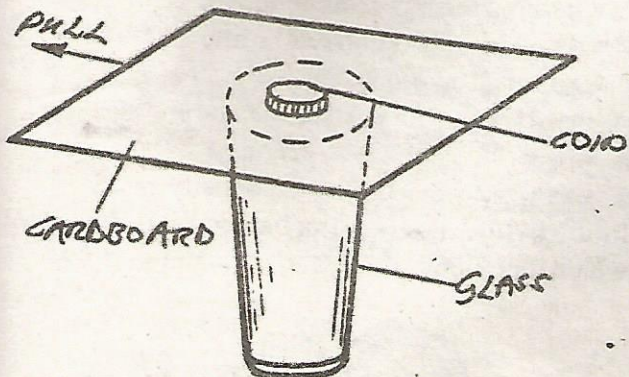
28.



Which one is **WRONGLY** classified?

- A. Double superphosphate
- B. Urea
- C. Calcium Ammonium Nitrate
- D. Organic mulches

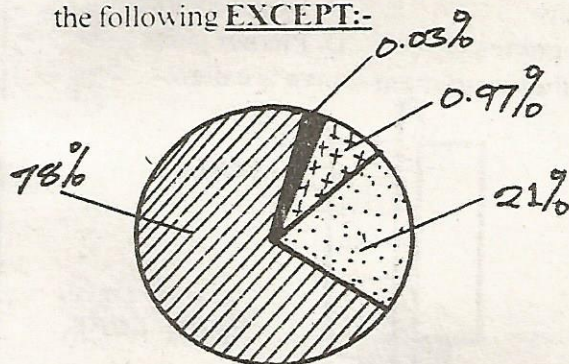
29. Use the diagram to answer the question below.



What will happen to the coin when you pull the cardboard?

- A. Coin will move along with cardboard
- B. The coin will remain in same position
- C. The coin will fall into the glass
- D. The coin went to the opposite direction

30. The diagram below shows the composition of air. the gas represented by 0.03% can be used in all the following **EXCEPT**:-

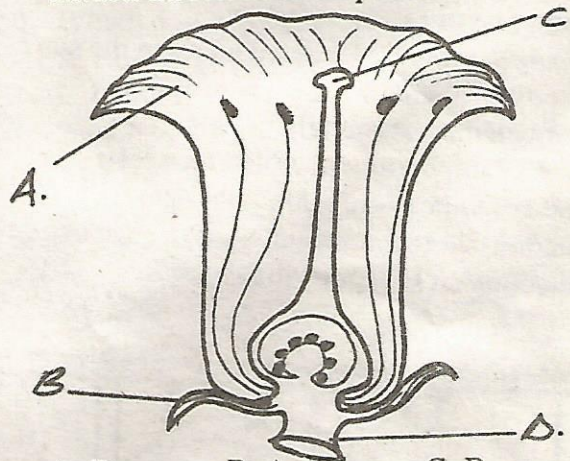


- A. Photosynthesis
- B. Preservation of food
- C. Fire extinguisher
- D. Seed germination

31. Which of the following determines the rate at which water drains through the soil?

- A. Size of particles of the soil
- B. Air content of the soil
- C. Mass of the soil
- D. Humus content of the soil

32. In the diagram shown above. Which part labelled attracts insects in insect pollinated flowers?

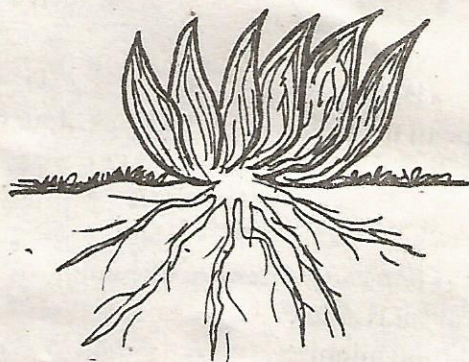


- A. D
- B. A
- C. B
- D. C

33. The booster of poliomyelitis is given at _____ age.

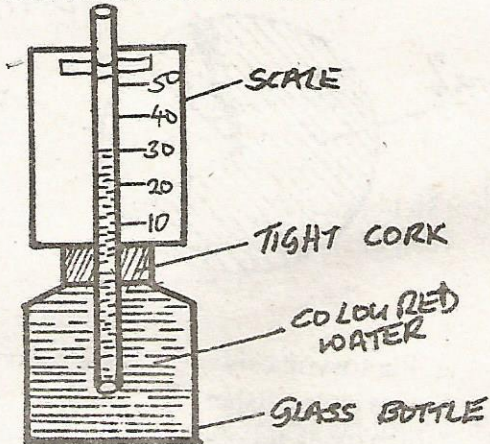
- A. 5 years
- B. 2 years
- C. at birth
- D. 4 years

34. Name the type of root system shown in the diagram below.

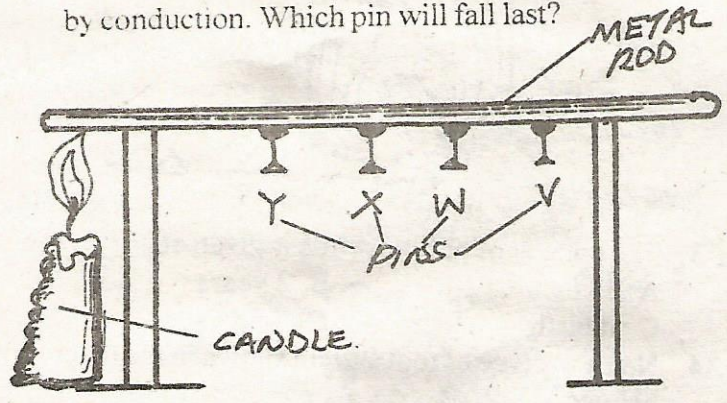


- A. Clasping roots
- B. Breathing roots
- C. Tap roots
- D. Fibrous roots

35. The following are insectivorous plants. Which one is NOT?
 A. Sundew B. Venus fly trap
 C. Saprophytes D. Pitcher plant
36. The weather instrument shown is called:-



- A. Air thermometer B. Liquid thermometer
 C. Water thermometer D. Barometer
37. What happens to the water in the bottle when air temperature rises?
 A. Warmer and expands
 B. Cooler and contracts
 C. Contracts and expands
 D. Cooler and expands
38. What happens to a bird when it basks in the sun?
 A. Its body temperature rises
 B. Its body temperature falls
 C. Its body temperature rises and then falls
 D. Its body temperature remain the same
39. The diagram below demonstrates the transfer of heat by conduction. Which pin will fall last?



- A. Y B. W C. X D. V
40. Which one of the following is NOT a colour of the spectrum?
 A. Indigo B. Purple
 C. Red D. Violet
41. Which parts of a seed make up the embryo?
 A. Plumule and radicle
 B. Radicle and hilum
 C. Testa and endosperm
 D. Micropyle and hilum

42. The following are characteristics of a certain flower
 (i) Large in size
 (ii) Brightly coloured petals
 (iii) Have pleasant scent
 (iv) Produce nectar
 (v) Have anthers which are not very large
 The above characteristics are of a flower pollinated by:-

- A. wind B. water
 C. insects D. none of the above
43. Which weed has the following characteristics?
 (i) Grows upright
 (ii) Has white flowers and produce a a lot of seeds
 (iii) Has a four cornered stem
 (iv) Seeds have hooks
 A. Pig weed B. Mexican marigold
 C. Black jack D. Wandering jew
44. Which one is not a waterborne disease?
 A. Bilharzia B. Typhoid
 C. Cholera D. Malaria
45. In which one of the following activities is water used for recreation?
 A. Watering plants B. Cooking
 C. Washing D. Swimming
46. Which of the food nutrients help us to grow and repair body tissues?
 A. Carbohydrates B. Proteins
 C. Vitamins D. Fats
47. A hilly area with deep channels is LIKELY to be experiencing:-
 A. splash erosion B. gully erosion
 C. sheet erosion D. rill erosion
48. Which of the following is a preventive measure against the spread of tuberculosis?
 A. Proper disposal of human waste
 B. Clearing bushes around houses
 C. Living in well ventilated houses
 D. Boiling drinking water
49. A beam balance is used to measure:-
 A. mass B. area
 C. volume D. density
50. In the below diagram the balloon will move into which direction?

