

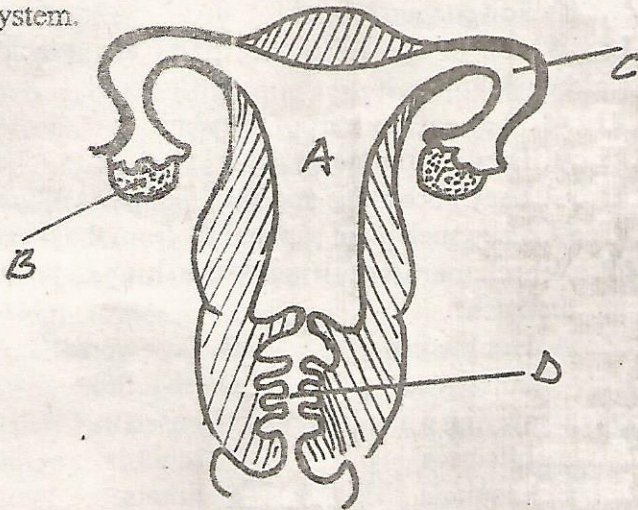
### SCIENCE

Time: 1 hour 40 mins

READ THESE INSTRUCTIONS CAREFULLY

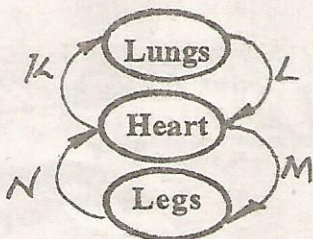
- Use only an ordinary pencil.
- Make sure that you have written on the answer sheet:-  
(I) YOUR NAME (II) NAME OF YOUR SCHOOL
- For each question show the correct answer by drawing line in the brackets in which the letter you have chosen is written.

1. The illustration below shows a female reproductive system.



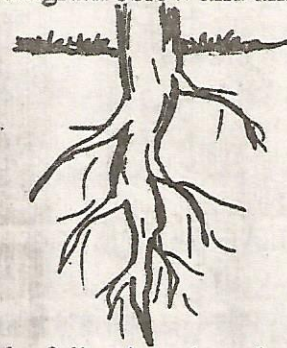
Which part produces the ovum?

- Carbondioxide carried during blood circulation is removed from the blood stream in the:-  
A. right auricle      B. aorta  
C. left ventricle      D. lungs
- Which component of tobacco leads to cigarette addiction?  
A. Tar      B. Carbondioxide  
C. Nicotine      D. Ash
- Study the diagram below and answer the question below.



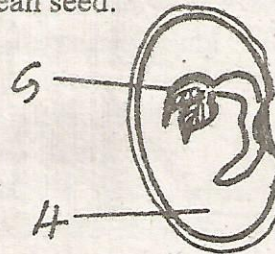
- Which pair of vessels carries de-oxygenated blood?
- A. L, N      B. L, M  
C. K, N      D. K, M

- The upper part of the small intestine is called:-  
A. duodenum      B. ileum  
C. appendix      D. spleen
- Study the diagram below and answer the question.



Which of the following plants have the root system as the one shown above?

- A. Pawpaw      B. Maize  
C. Passion fruit      D. Pea nuts
- Which one of the following is NOT a traditional method of preserving food?  
A. Salting      B. Canning  
C. Drying      D. Smoking
  - Which one of the following drug causes lack of sleep?  
A. Cocaine      B. Tobacco  
C. Heroine      D. Alcohol
  - The diagram below shows the internal structure of a bean seed.

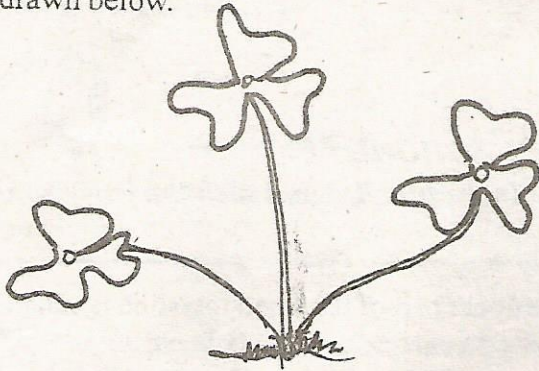


- What are the names of the parts marked G and H respectively?
- A. Embryo, micropyle      B. Radicle, endosperm  
C. Embryo, food store      D. plumule, cotyledon



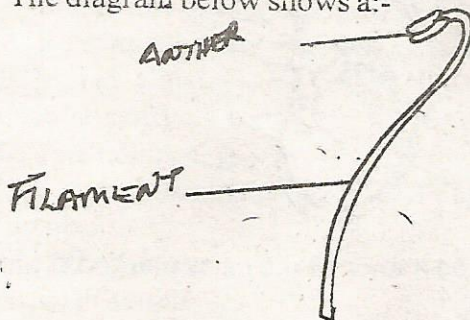
10. Which one of the following fertilizers **DOES NOT** contain nitrogen?
- Urea
  - Single superphosphate
  - Sulphate of ammonia
  - Calcium ammonium nitrate

11. During a nature walk, Njeri saw a weed like one drawn below.



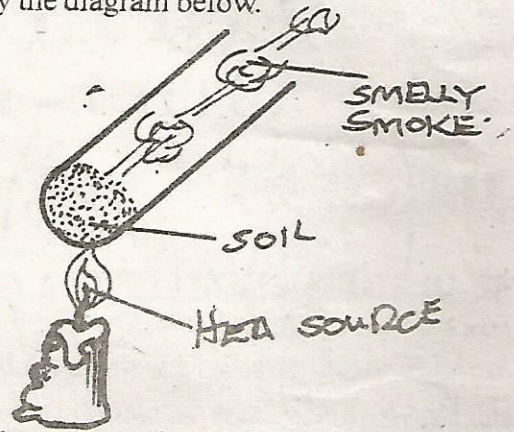
Name the weed drawn.

- Black jack
  - Oxalis
  - Pigweed
  - Mexican Marigold
12. Amphibians have the following characteristics **EXCEPT**:-
- |                         |                    |
|-------------------------|--------------------|
| A. Are cold blooded     | B. are vertebrates |
| C. lay unfertilized egg | D. have scales     |
13. Which of the following animal feed is **NOT** a legume?
- |            |              |
|------------|--------------|
| A. Lucerne | B. Desmodium |
| C. Oats    | D. Clovers   |
14. The percentage of air used for germination is:-
- |          |          |
|----------|----------|
| A. 0.03% | B. 78%   |
| C. 21%   | D. 0.97% |
15. The fifth, seventh and eighth planets respectively are:-
- Jupiter Uranus, Neptune
  - Mars, Jupiter, Saturn
  - Earth, Mars, Jupiter
  - Neptune, Uranus, Jupiter
16. The diagram below shows a:-



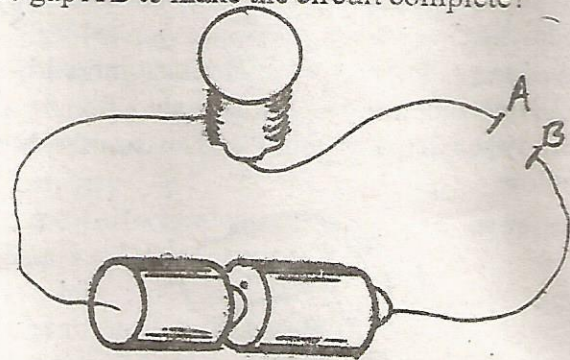
- |           |            |
|-----------|------------|
| A. pistil | B. stamen  |
| C. sepal  | D. corolla |

17. Study the diagram below.



Which property of soil is being investigated?

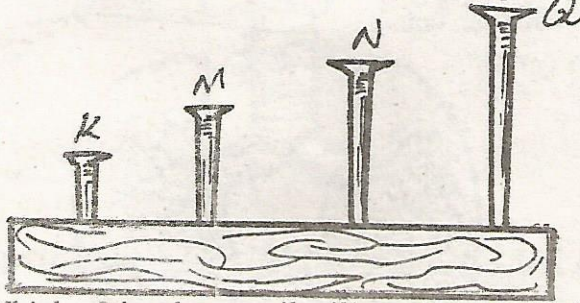
- Soil contains air
  - Soil contain water
  - Soil contain mineral salts
  - Soil contain humus
18. Which of the following parts are attacked by aphids?
- They eat any part of the plant
  - They cut the stems
  - They bore holes and eat inner parts of grains
  - They suck plant sap mainly from the leaves
19. Which parasite attacks the lungs, brain and stomach?
- |             |               |
|-------------|---------------|
| A. Hookworm | B. Tapeworm   |
| C. Lungworm | D. Liverfluke |
20. Recycling water is commonly used in:-
- |              |            |
|--------------|------------|
| A. factories | B. schools |
| C. hospitals | D. hotels  |
21. Which one of the following statements is true about straight fertilizers?
- Contains two or more micronutrients
  - Contains only one macronutrient
  - Contains two or three macronutrients
  - Contains micro and macro nutrients
22. Which of the following materials can be used to fit the gap A B to make the circuit complete?



- |                 |                |
|-----------------|----------------|
| A. Wood         | B. Graphite    |
| C. Plastic foil | D. Nylon paper |
23. Kamau placed his hands under a jiko. Heat reached his hands mainly by:-
- |                |               |
|----------------|---------------|
| A. convection  | B. Conduction |
| C. Evaporation | D. Radiation  |



24. The diagram below shows a simple xylophone.



Which of the above nail will produce the highest pitch when hit?

- A. K      B. N      C. Q      D. M

25. Geothermal energy is obtained from:-

- A. fossils fuel      B. tides  
C. the earth interior      D. Oils

26. Which of the following materials is magnetic?

- A. Copper      B. Aluminium  
C. Nickel      D. Zinc

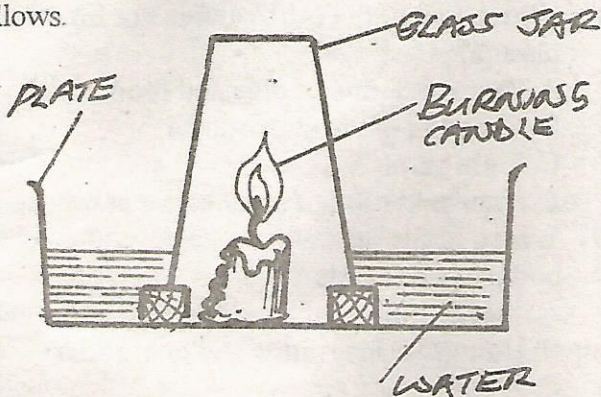
27. Which of the following activity will not increase friction?

- A. Putting treads on shoe soles  
B. Smoothing the surface  
C. Pouring sand on the floor  
D. Making the surface coarse

28. Weight is measured in:-

- A. kilogrammes      B. metres  
C. newton      D. grammes

29. Study the diagram and answer the questions that follows.



Which of the following would happen?

- A. Water will enter the jar  
B. Pressure in the jar will increase  
C. Amount of carbon dioxide inside the jar will decrease  
D. Amount of air inside the jar will increase

30. Pupils in Kawamaitha Primary were asked to collect the following materials.

- thin walled glass bottle
- manila paper
- ink and water
- basin
- wooden stand
- narrow inner tube of biro pen
- a cork

Which of the following instrument were they intending to construct?

- A. Liquid thermometer      B. Barometer  
C. Anemometer      D. Air thermometer

31. Which of the following materials would least pollute the environment when used as a fuel?

- A. Kerosene      B. Wood  
C. Charcoal      D. Biogas

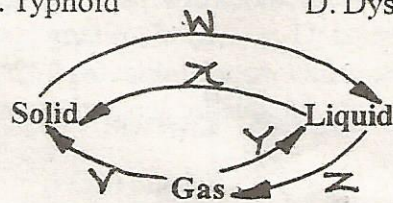
32. The following are signs and symptoms of a certain water borne disease.

- headache
- high fever
- rashes on the chest
- abdominal pains

The disease is LIKELY to be:-

- A. Cholera      B. Bilharzia  
C. Typhoid      D. Dysentery

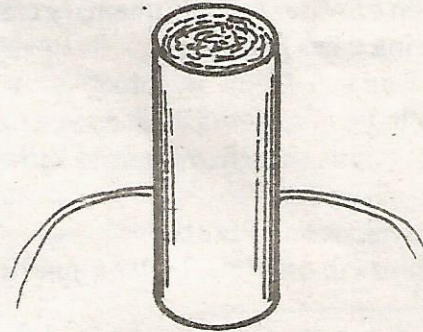
33.



Which of the above arrows indicates increase in temperature?

- A. W, Z      B. X, Y  
C. Y, W      D. Z, V

34. The diagram below was an experiment carried by class 5 pupils at Raitha Primary School.



From the experiment they learnt that:-

- A. pressure at the same depth is equal  
B. pressure increases with depth  
C. pressure in liquid is always equal  
D. pressure is not necessary

35. Which of the following list of levers belong to the same class?

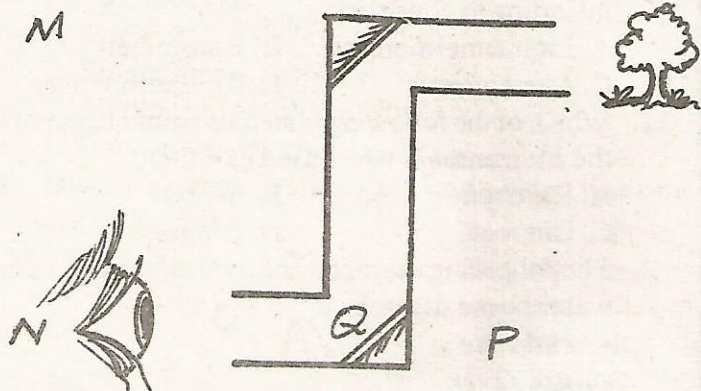
- A. Pliers, spade, wheelbarrow, crowbar  
B. See-saw, fishing rod, spade, foot  
C. Scissors, crowbar, tin opener, pliers  
D. Fishing rod, wheelbarrow, crowbar, nut cracker

36. Which of the following materials can be used as a pesticide?

- A. Wood ash      B. Cow dung  
C. Saw dust      D. Sand



37. The diagram below shows a periscope.



At what points M, N, P and Q will the image of the tree be seen?

- A. N  
B. M  
C. Q  
D. P

38. The following are methods of separating mixtures.

- (i) Picking (ii) Filtering  
(iii) Decanting (iv) Sieving

Which method are suitable for separating water and sand?

- A. ii and iv  
B. i and iii  
C. i and iv  
D. ii and iii

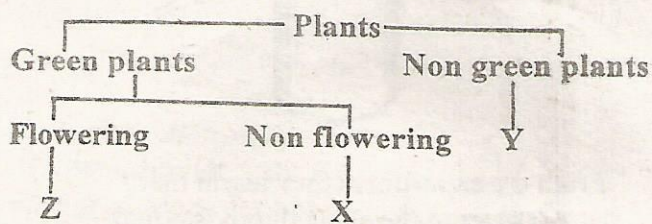
39. Which of the following is **NOT** an advantage of zero grazing?

- A. Manure is collected easily  
B. Require small piece of land  
C. Less wastage of feed  
D. Require a lot of labour

40. Absorption of water in the alimentary canal in the human being takes place in the:-

- A. ileum  
B. colon  
C. stomach  
D. duodenum

41. A group of pupils classified plants as shown below.



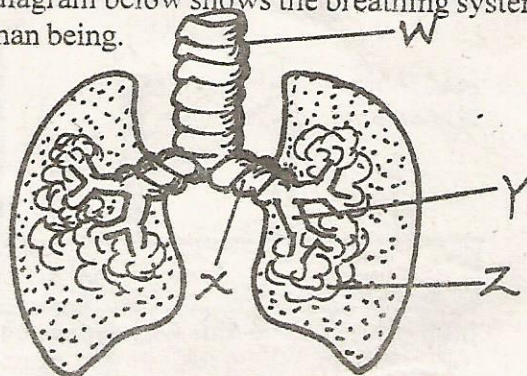
Which plants can represent X, Y, Z respectively?

- A. Bean, mushroom, mucor  
B. Maize, algae, yeast  
C. Pine, puffball, bean  
D. Yeast, lichen, grass

42. Which chamber in the human heart has the thickest muscles?

- A. Left ventricle  
B. Right auricle  
C. Right ventricle  
D. Left auricle

43. The diagram below shows the breathing system of a human being.



In which parts labelled W, X, Y, Z does the exchange of gas take place?

- A. Z  
B. X  
C. W  
D. Y

44. Which of the following foods is preserved by a gas that is 0.03% of the air?

- A. Frozen meat  
B. Salt on fish  
C. Honey meat  
D. Bottled soda

45. Which one of the following statements is not true about the tooth shown below?



- A. It is first to shed off  
B. It is sharp and pointed  
C. It can bite and cut  
D. It is chisel-shaped

46. Which one of the following is not function of the plasma?

- A. Transportation of digested food  
B. Carrying of waste products  
C. Fight germs  
D. Transportation of other blood components

47. Which of the following is an emotional change in both boys and girls?

- A. Increase in weight and height  
B. Hair grow in armpits and pubic area  
C. Pimples may appear  
D. Worrying about their appearance

48. Which deficiency disease is caused by starvation?

- A. Marasmus  
B. Kwashiorkor  
C. Beriberi  
D. Rickets

49. The most effective way of controlling the spread of HIV and AIDS in unmarried is:-

- A. Abstain  
B. Use of protective devices  
C. Staying at home  
D. Remain faithful to the partner

50. The purpose of a switch in a circuit is to:-

- A. Reduce the current  
B. Increase the current  
C. Turn the current on and off  
D. Ensure that the current is always complete