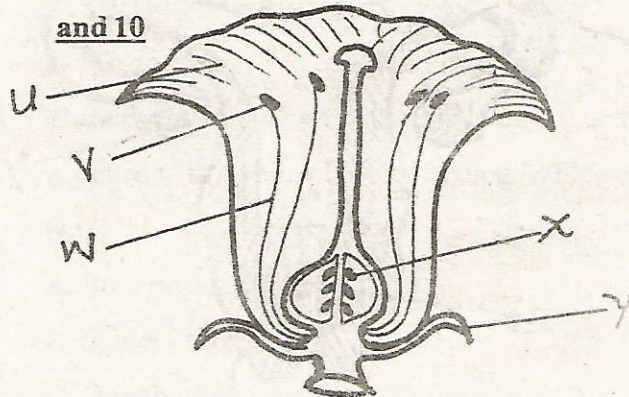


SPEAR SERIES

STD 6 - TERM III SCIENCE

- Which one of the following cannot be used to describe force?
A. Lift B. Pull
C. Speed D. Push
- Which one of the following plants is not a legume?
A. Beans B. Peas
C. Soyabeans D. Carrots
- What name is given to a group of colours formed due to dispersion of white light?
A. Spectrum B. Beam
C. Reflection D. Dispersal
- In which grazing method is a rope used to restrict the movement of animals?
A. Paddockging B. Tethering
C. Strip grazing D. Stall feeding
- The following are waterborne diseases except
A. Bilharzia B. Typhoid
C. Malaria D. Cholera
- Silages is stored in _____
A. a bale B. a silo
C. a stove D. a hole
- The largest planet in the solar system is _____
A. Neptune B. Uranus
C. Jupiter D. Mars
- Which of the following disease is spread through air?
A. Typhoid B. Malaria
C. Tuberculosis D. AIDS

Use the following diagram to answer questions 9 and 10

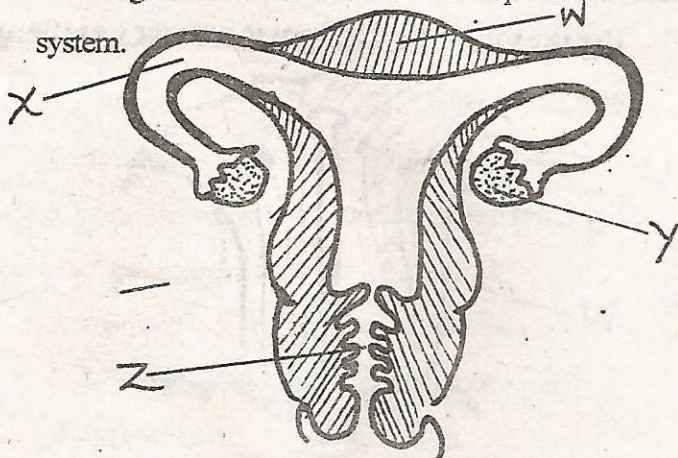


- Which part produces ovules for fertilization?
A. V B. Y C. X D. W
- Which part attracts insects for pollination?
A. U B. X C. V D. Y
- One of the following diseases is communicable. Which one is it?
A. Kwashiorkor B. Tuberculosis
C. Rickets D. Marasmus
- The B.C.G vaccine is given to someone against
A. Tuberculosis B. Poliomyelitis
C. Measles D. Malaria
- When an ovum is released from the ovary it passes through the _____ to reach the _____
A. oviduct, vagina B. uterus, vagina
C. fallopian tube, uterus D. uterus, cervix
- The tube that carries urine and sperms out of the male body is known as _____
A. penis B. urethra
C. glands D. sperm duct

15. Which one of the following part of a flower makes up the female part?

- A. Filament, anther B. Stigma, filament
C. Sepals, petals D. Stigma, ovules

16. The diagram below shows a female reproductive system.



In which part does fertilization take place?

- A. Z B. X C. Y D. W

17. Which one of the following is a male part of a flower?

- A. Stigma B. Filament
C. Style D. Ovules

18. Which one of the following is correctly matched with its function?

- A. Testis - passage for sperms
B. Womb - passage for urine
C. Oviduct - produces sperm
D. Ovary - produces ova

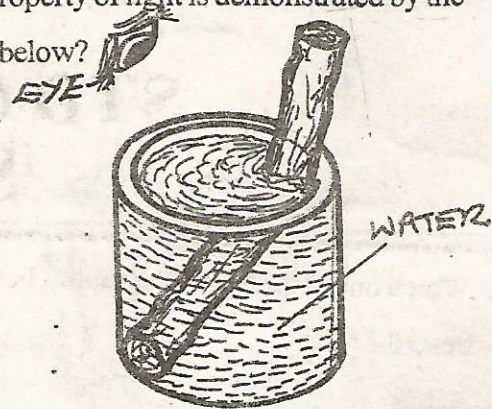
19. Which of the following units is used to measure force?

- A. Newtons B. Kilograms
C. Grams D. Joules

20. The amount of nitrogen gas in air is approximately

- A. 20% B. 0.03%
C. 78% D. 0.97%

21. Which property of light is demonstrated by the diagram below?

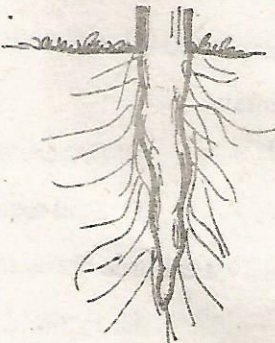


- A. Refraction B. Reflection
C. Dispersion D. Diffraction

22. A ray is _____

- A. the path followed by light
B. A group of particles of light
C. A source of light
D. reflected light

23. Which of the plants listed below has the type of root drawn?

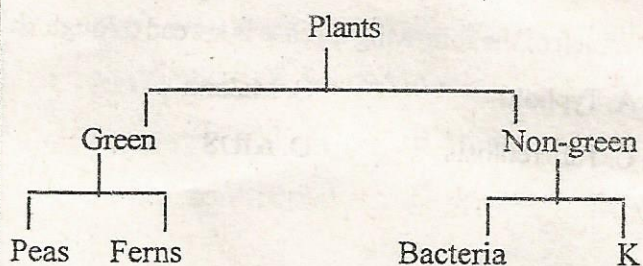


- A. Maize and peas B. Groundnuts and carrots
C. Millet and rice D. Wheat and soyabeans

24. Plants lose water to the atmosphere mainly through a process known as _____

- A. transpiration B. Photosynthesis
C. germination D. evaporation

25. Study the chart below.



The part marked 'K' can be correctly filled with

- A. mosses
- B. pawpaw
- C. mould
- D. algae

26. Which group of animals below consists of reptiles only?

- A. Lizard, toad, turtle
- B. Chameleon, tortoise, crocodile
- C. Rat, cow, snake
- D. Newt, salamander, frog

27. The planet surrounded by a halo ring is _____

- A. Jupiter
- B. Saturn
- C. Uranus
- D. Venus

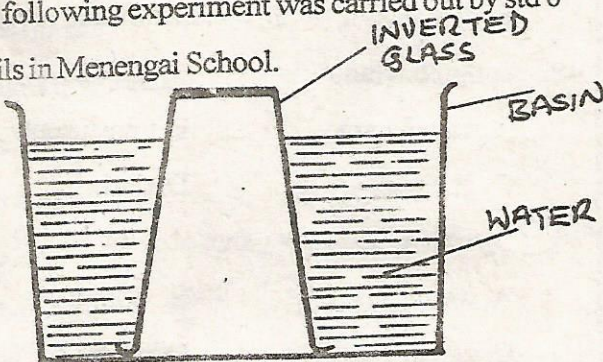
28. Bilharzia worm affect the _____ and _____

- A. urinary bladder, lungs
- B. gall bladder, intestines
- C. urinary bladder, intestines
- D. intestines, liver

29. The fusion between the male sex cell in the pollen grains and the female sex cell inside the ovary is called _____

- A. pollination
- B. dispersal
- C. germination
- D. fertilization

30. The following experiment was carried out by std 6 pupils in Menengai School.



They concluded that air _____

- A. has weight
- B. occupies space
- C. has mass
- D. has a vacuum

31. Which one of the following is not an effect of HIV infection to an individual?

A. Congestion in hospitals

B. Opportunistic diseases

C. Lowered self esteem

D. Lowered standard of living

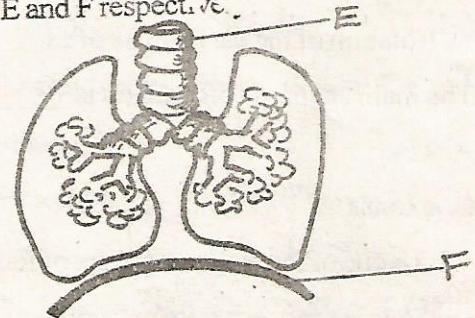
32. Three of the following names refer to the first set of teeth in human beings except? -

- A. Deciduous teeth
- B. Primary teeth
- C. Wisdom teeth
- D. Milk teeth

33. Three of the following small animals are correctly matched with their methods of feeding. Which one is not?

- A. Butterfly - sucking
- B. Spider - sucking
- C. Grasshopper - sucking
- D. Tick - sucking

34. In the diagram below, what name is given to the parts labelled E and F respectively.



- A. Trachea, oesophagus
- B. Bronchus, diaphragm
- C. Trachea, bronchus
- D. Windpipe, diaphragm

35. Which one of the following animal feeds is a fodder?

- A. Dairy meal
- B. Sweet potato vines
- C. Kikuyu grass
- D. Creep pellets

36. The diagram below is a bean seed.



Which part marked J, K and L allows water and air to enter the seed?

- A. L B. K
- C. J and L D. J

37. Which of the following is a nutritional deficiency disease?

- A. Rickets B. Malaria
- C. Typhoid D. Measles

38. Kimeu was warming himself beside a big fire. The heat reaches him through which mode?

- A. Convection B. Radiation
- C. Conduction D. Evaporation

39. What causes day and night?

- A. Rotation of the earth on its own axis
- B. Revolution of the earth on its orbit
- C. Rotation of the sun
- D. Rotation of the earth on its orbit

40. The main agent of soil erosion is _____

- A. wind B. water
- C. animals D. ice

41. Which one of the following pairs of food preservation methods are modern only?

- A. Smoking and drying
- B. Using honey and salting
- C. Using wood ashes and smoking
- D. Freezing and canning

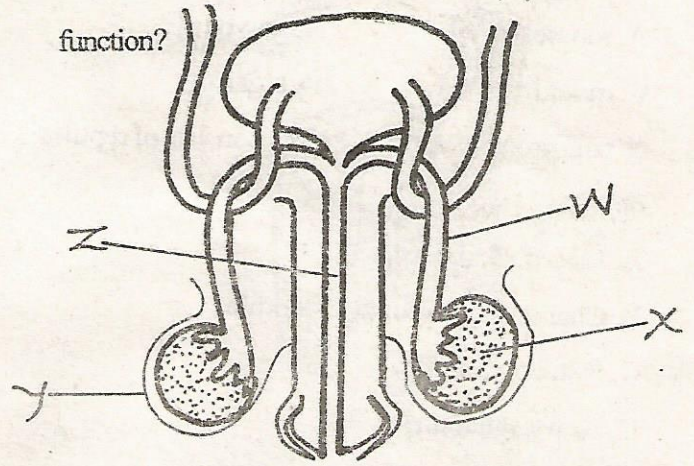
42. When something is moving, we say it is in _____

- A. inertia B. gravity
- C. motion D. stational

43. Which of the following animals feeds on a legume?

- A. Lucerne B. Clover
- C. Desmodium D. Rhodes

44. Which one is not a matched correctly with its function?



- A. W - passage of sperms from testis to urethra
- B. X - produce sperms
- C. Y - contains testis
- D. Z - produce semen

45. Sperms as well as urine come out of the male body through the part marked _____

- A. Z B. W C. X D. Y

46. Which one of the following pairs does not consists of cereals?

- A. Maize, sorghum B. Kales, beans
- C. Wheat, millet D. Rice, oats

47. Heat can travel in air or gases by _____

- A. conduction B. radiation
- C. convection D. conduction and convection

48. A tinted window is _____

- A. transparent B. translucent
- C. opaque D. dark

49. Sound is produced when objects _____

- A. warm B. vibrate
- C. expand D. contract

50. The period taken by the body to produce antibodies that fight HIV is referred to as _____

- A. door period B. window period
- C. incubation period D. dormant period