

# VINEYARD

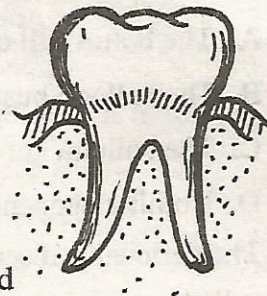
AIMWA  
009

TERM III-

SCIENCE

STD 6

1. Which of the following juices ends the digestion of food in the gut?
  - A. Gastric juice
  - B. Intestinal juice
  - C. Saliva
  - D. Bile juice
2. Which part of the male reproductive system are sperms produced?
  - A. Epididymis
  - B. Urethra
  - C. Sperm duct
  - D. Testis
3. When breathing out the \_\_\_\_\_
  - A. ribs move upwards and outwards
  - B. diaphragm become dome shaped
  - C. lungs expand
  - D. ribs move down and outwards
4. Ovulation in females takes place in the \_\_\_\_\_
  - A. ovary
  - B. oviduct
  - C. uterus
  - D. vagina
5. Which of the following plant is green and no-flowering?
  - A. Mould
  - B. Moss
  - C. Acacia
  - D. Puffball
6. The tooth shown below is mainly used for:-

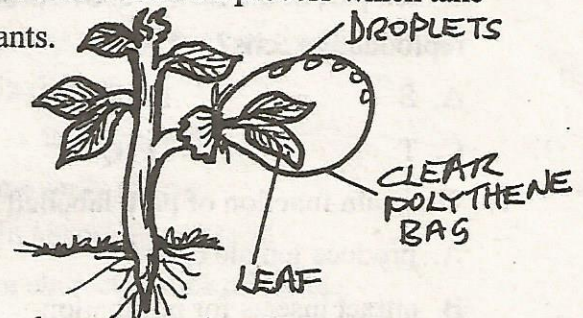


- A. Tearing food
  - B. Biting and cutting food
  - C. Tearing and chewing food
  - D. Crushing and grinding food
7. The following are characteristics of animals:-
    - (i) Body covered with scales
    - (ii) Lay eggs
    - (iii) Body temperature changes with surrounding
    - (iv) Breath by lungs

Which animal listed below does not have all the features above?

- A. Eagle
  - B. Lizard
  - C. Crocodile
  - D. Gecko
8. Which of the following is not a function of roots in plants?
    - A. Storing food
    - B. Making food
    - C. Breathing
    - D. Absorption
  9. Which of the following diseases is not communicable?
    - A. Malaria
    - B. Measles
    - C. Tetanus
    - D. Tuberculosis
  10. A baby is given a BCG vaccine at birth to prevent from controlling?
    - A. Diphtheria
    - B. Tuberculosis
    - C. Measles
    - D. Polio

11. The diagram below shows a process which take place in plants.



The process shown above is called \_\_\_\_\_

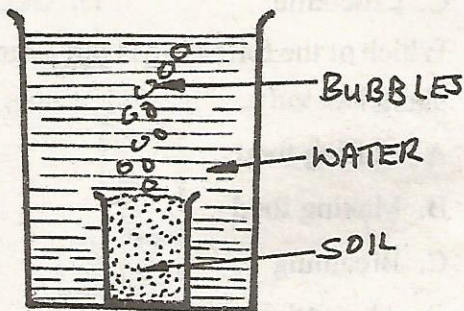
- A. transpiration
- B. transportation
- C. photosynthesis
- D. absorption



12. Which of the following is the first stage of HIV infection?

- A. Incubation
- B. Assymptomatic
- C. Window
- D. Full-blown

13. The set-up below was made by class four pupils to investigate a component of soil. Which component were they investigating

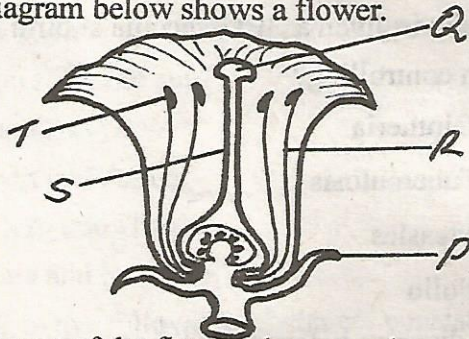


- A. Water
- B. Air
- C. Humus
- D. Living things

14. Which of the following factors does not affect floating and sinking?

- A. Shape
- B. Size
- C. Mass
- D. Material

15. The diagram below shows a flower.



Which part of the flower above produces the male reproductive cells?

- A. S
- B. R
- C. T
- D. Q

16. The main function of part labelled P is:-

- A. produce female cells
- B. attract insects for pollination
- C. contain the plain grains
- D. protect the flower at bud stage

17. Which of the following plants does not have a fibrous root system?

- A. Rice
- B. Millet

- C. Grass
- D. Beans

18. The rate at which water rises up the soil depends on:-

- A. size of the particles
- B. amount of humus in soil
- C. colour of the soil
- D. air content in the soil

19. The largest planet in the solar system is

- A. Venus
- B. Jupiter
- C. Saturn
- D. Pluto

20. Which physical change take place in girls only?

- A. Wet dreams
- B. Production of sex cells
- C. Growth of pubic hair
- D. Menstrual flow

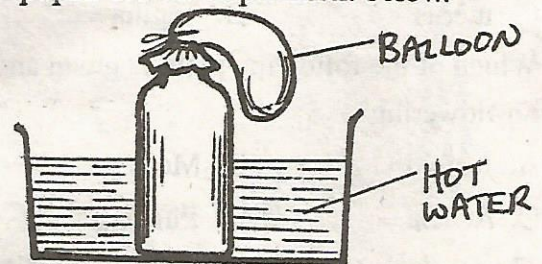
21. Dried fodder preserved by drying is called:-

- A. pasture
- B. silage
- C. hay
- D. concentrate

22. Fertilization in plants takes place in the:-

- A. Ovary
- B. Corolla
- C. Stigma
- D. Style

23. Std. 5 pupils did the experiment below.



What will be observed after sometime?

- A. The bottle will crack
- B. The balloon busted
- C. The balloon got inflated
- D. Nothing happened

24. The deficiency disease caused by lack of iron is called:-

- A. Kwashiorkor
- B. Anaemia
- C. Marasmus
- D. Scurvy

25. Which of the following statements is not true about a windsock?



- A. It has black and white stripes
- B. It is open on both sides
- C. It measures direction and speed of wind
- D. It should be placed in an open place

26. Convection is a method of heat transfer in:-

- A. solids and liquids
- B. liquids only
- C. gases only
- D. liquids and gases

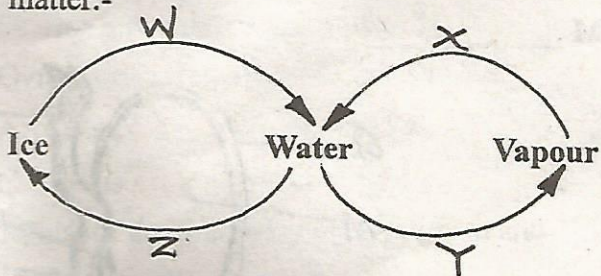
27. The amount of matter in an object is its:-

- A. mass
- B. density
- C. force
- D. weight

28. The following are rotational methods of grazing except:-

- A. strip grazing
- B. herding
- C. paddocking
- D. tethering

29. The diagram below shows change of state of matter:-



Process W and Z represents \_\_\_\_\_ and \_\_\_\_\_ respectively.

- A. melting and freezing
- B. freezing and evaporation
- C. melting and evaporation
- D. condensation and freezing

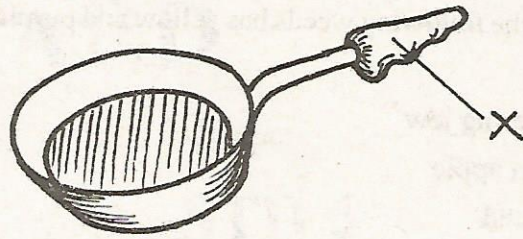
30. Which two processes are as a result of loosing heat?

- A. X and Y
- B. X and Z
- C. W and Z
- D. Z and Y

31. The tube through which urine and sperms are passed in human beings is called:-

- A. oviduct
- B. sperm duct
- C. epididymis
- D. urethra

32. The diagram below shows a cooking pan.



The part labelled X should be made of:-

- A. wood
- B. alluminium
- C. glass
- D. copper

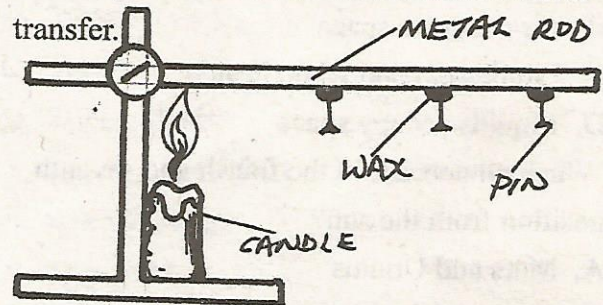
33. The fusing of male and female sex cells is called:-

- A. fertilization
- B. photosynthesis
- C. pollination
- D. transpiration

34. The embryo of a seed is made up of \_\_\_\_\_ and \_\_\_\_\_

- A. anther and stigma
- B. plumule and stigma
- C. anther and style
- D. plumule and radicle

35. The diagram below shows a method of heat transfer.



The method of heat transfer is called:-

- A. convection
- B. conduction
- C. evaporation
- D. radiation

36. The main function of fibre in the body is to:-

- A. help in digestion
- B. prevent constipation
- C. give the body energy
- D. help in absorption of food

37. Below are characteristics of clouds:-

- (i) Puffy white in colour
- (ii) Dome shaped
- (iii) Have flat bases

The clouds described above are likely to be:-

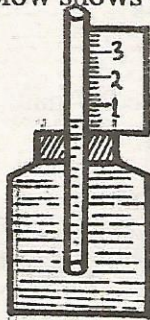
- A. Nimbus
- B. Cirrus



38. Which of the following weeds has yellow and purple flowers?
- Wandering jew
  - Sodom apple
  - Pig weed
  - Oxalis

39. The following animals feeds are legumes except:-
- clover
  - lucerne
  - desmodium
  - nappier grass

40. The diagram below shows a weather instrument.



The instrument works on the principle that:-

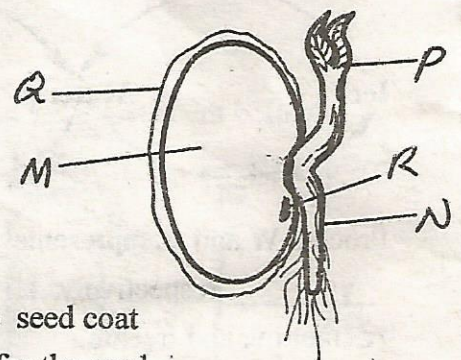
- Air expands when heated
  - Air occupies space
  - Liquids expand when heated
  - Liquids occupy space
41. Which planets are in the fourth and seventh position from the sun?
- Mars and Uranus
  - Earth and Jupiter
  - Saturn and Uranus
  - Mars and Neptune
42. Which of the following substances consist of those that have definite shape and size?
- Water and oxygen
  - Stone and wood
  - Oxygen and carbon dioxide
  - Kerosine and stone
43. Which of the following materials does sound travel slowest?
- Solid
  - Vaccum
  - Liquid
  - Gases
44. Bile juice is stored in the:-
- liver
  - duodenum

- gall bladder
- stomach

45. Which of the following statements is not correct about HIV/AIDS?
- It develops in stages
  - It can be cured
  - It is caused by a virus
  - It weakens the body immune system
46. Which of the following methods would not help prevent spread of malaria?
- Immunization
  - Draining stagnant water
  - Sleeping under treated nets
  - Taking anti-malaria drugs

47. Which of the following deficiency diseases is prevented by eating plenty of citrus fruits?
- Scurvy
  - Marasmus
  - Rickets
  - Anaemia

48. The diagram shows a bean seed. The part labelled M \_\_\_\_\_



- is called the seed coat
  - stores food for the seed
  - is part of the embryo
  - develops into shoot
49. Which of the following does not pass through part R?
- Water
  - Radicle
  - Air
  - Plumule
50. The following are conditions necessary for germination of seeds except:-
- light
  - oxygen
  - warmth
  - water