

# MAKUENI COUNTY

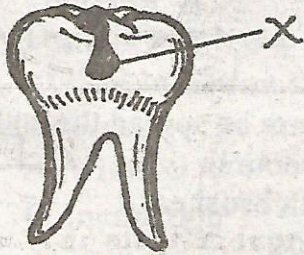
PENPLUS  
MAKUENI

## STD 5 - TERM 3 SCIENCE

Time: 1 Hour 40 Min

- Water for drinking should be:-  
A. Filtered and boiled      B. Warmed  
C. Cold                              D. Clean
- Which type of root system is found in maize and rice?  
A. Fibrous                      B. Buttress  
C. Tap                              D. Serial

- The tooth problem below is called:-

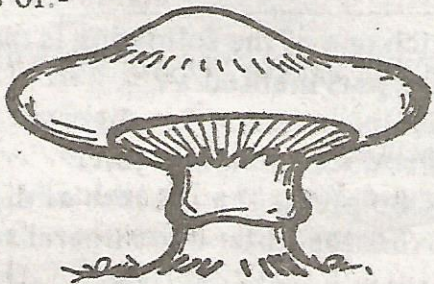


- Tooth decay
- Cavity
- Gingivitis
- Plaque

- In the human breathing system, exchange of gases takes place in the:-  
A. Nose                      B. Lungs  
C. Trachea                      D. Diaphragm
- The first part of the small intestine is called:-  
A. Duodenum                      B. Colon  
C. Ileum                      D. Villi

- The following are green non flowering plants EXCEPT:-  
A. Pine    B. Moss    C. Fern    D. Mango

- Standard 5 pupils saw the plant drawn below. The plant shown reproduces by means of:-



- Seeds
- Flowers
- Spores
- Cell division

- Eating food rich in calcium and vitamin D can prevent one from getting a deficiency disease known as:-

- Anaemia
- Marasmus
- Rickets
- Kwashiorkor

- \_\_\_\_\_ will be found growing on decaying bread.

- Dandruff
- Yeast
- Mould
- Moss

- The soil with the least amount of air is:-

- Sand
- Gravel
- Clay
- Loam

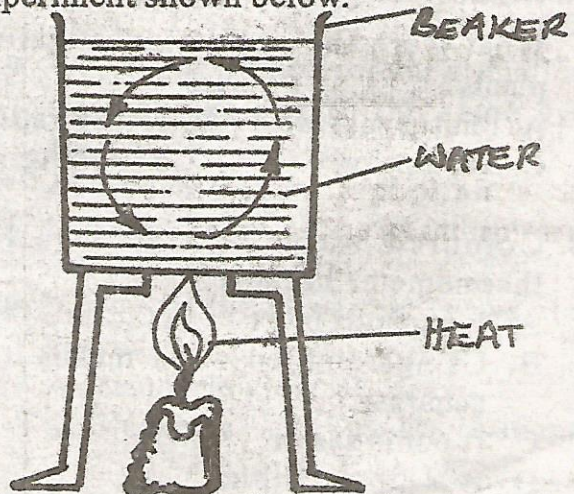
- The trachea is another name for:-

- Mouth
- Windpipe
- Larynx
- Bronchi

- An example of an egg laying mammal is:-

- Whale
- Polar bear
- Seal
- Billed platypus

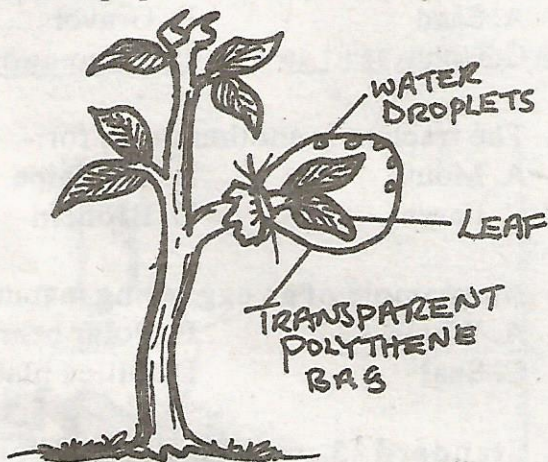
- Standard 5 pupils carried out the experiment shown below.



What were the pupils investigating?

- Radiation in water
- Conduction in water
- Convection in air
- Convection in water

14. The texture of soil depends on:-  
 A. Size of air spaces  
 B. Its ability to hold water  
 C. Size of soil particles  
 D. Its ability to spread
15. An example of plant that grows in arid areas is:-  
 A. Water lily                      B. Maize  
 C. Algae                              D. Cactus
16. Which one of the following substances will occupy the greatest space?  
 A. Sand                              B. Iron fillings  
 C. Flour                              D. Cotton wool
17. The diagram below shows an investigation standard 5 pupils carried out.



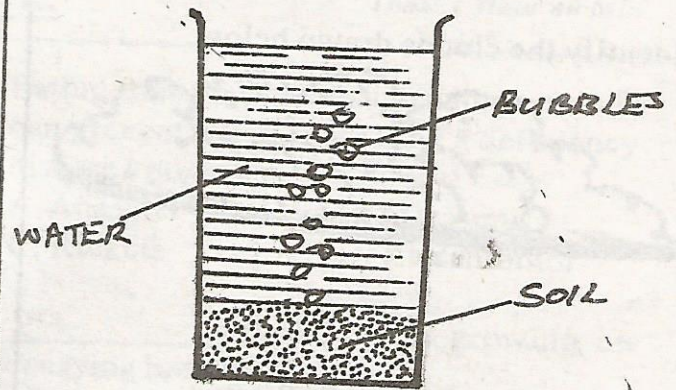
What were the pupils investigating in plants?

- A. Photosynthesis      B. Transpiration  
 C. Absorption            D. Breathing
18. Coloured water is used in a liquid thermometer because:-  
 A. It expands more  
 B. Using coloured water makes it more accurate  
 C. It cools faster  
 D. It is more visible
19. Which one of the following is a natural way of lighting a house?  
 A. Bulbs                      B. Windows  
 C. Candles                    D. Fire

20. Which one of the following animals does NOT breath through the lungs?  
 A. Hawk                              B. Tortoise  
 C. Frog                                D. Fish
21. Three of the following are correct statements about a wind sock EXCEPT:-  
 A. It is open on both ends  
 B. It points to the direction the wind is blowing to  
 C. It points to the direction from which the wind is blowing  
 D. It is coloured in black and white stripes
22. Digested food is absorbed in the:-  
 A. Ileum                              B. Rectum  
 C. Stomach                          D. Colon
23. HIV/AIDS cannot be spread through:-  
 A. Sexual intercourse  
 B. Sharing tooth brushes  
 C. Shaking hands  
 D. Blood transfusion
24. Which of the following animals is NOT an invertebrate?  
 A. Scorpions                      B. Crabs  
 C. Lobsters                        D. Tortoise
25. The diagram below shows the human digestive system.
- 
- Which one of the following is the function of the part marked T?  
 A. Helps in absorbing digested food  
 B. Produce intestinal juice  
 C. Completes the process of digestion  
 D. Absorbs water and mineral salts
26. Which one of the following is not a cereal crop?  
 A. Maize                              B. Rice  
 C. Millet                              D. Sunflower

27. The first stage of HIV infection is called:-  
 A. Window                      B. Full blown  
 C. Incubation                  D. Symptomatic
28. For healthy teeth we need all the following EXCEPT:-  
 A. Calcium                      B. Milk  
 C. Phosphorous                D. Biscuits
29. Sound is a form of energy produced when objects \_\_\_\_\_  
 A. Expand                      B. Contract  
 C. Vibrate                      D. Fall
30. During which one of the following stages of HIV infection can the body NOT fight diseases?  
 A. Window                      B. Full blown  
 C. Incubation                  D. Symptomatic
31. Which one of the following is NOT a characteristic of amphibians?  
 A. They have scales  
 B. They breath by lungs  
 C. Their body temperature varies with the surrounding  
 D. They spend their first stages of life in water
32. Which one of the following is NOT a deficiency disease?  
 A. Marasmus                    B. Dental carries  
 C. Anaemia                      D. Kwashiorkor
33. To drive nails in a piece of wood one will use \_\_\_\_\_  
 A. A screw nail                B. A hammer  
 C. A chisel                      D. A mallet
34. The ability of water to rise up in soil is called:-  
 A. Texture                      B. Drainage  
 C. Capillarity                  D. Coarseness

35. Standard four pupils carried out the experiment shown below.



- What were the pupils investigating?  
 A. Water in soil                B. Humus  
 C. Animals in water          D. Air in water
36. Which of the following is NOT a stage of HIV/AIDS?  
 A. Window                      B. Burial  
 C. Incubation                  D. Full blown
37. Moulds belong to a group of plants called:-  
 A. Ferns.                        B. Algae  
 C. Mushrooms                 D. Fungi
38. Which one of the following is not a floater?  
 A. Match stick                 B. Bottle top  
 C. Feather                      D. Iron fillings
39. Which one of the following small animals does not belong to the same group as others?  
 A. Spider                        B. Crab  
 C. Tick                          D. Scorpion
40. \_\_\_\_\_ is the weed that grows along the ground.  
 A. Wondering jew              B. Oasis  
 C. Blackjack                    D. Mexican marigold
41. The nose contains \_\_\_\_\_ and \_\_\_\_\_ for cleaning the air we breathe.  
 A. Saliva and mucus  
 B. Mucus and hair  
 C. Hair and saliva  
 D. Fur and hair

42. The date after which medicine should NOT be used is called:-

- A. Dose                      B. Manufacturing date  
C. Cure                      D. Expiry date

43. Identify the clouds drawn below.

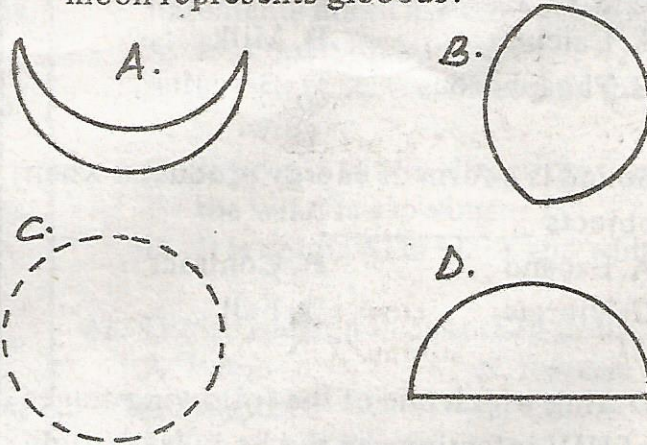


- A. Cirrus                      B. Stratus  
C. Cumulus                  D. Nimbus

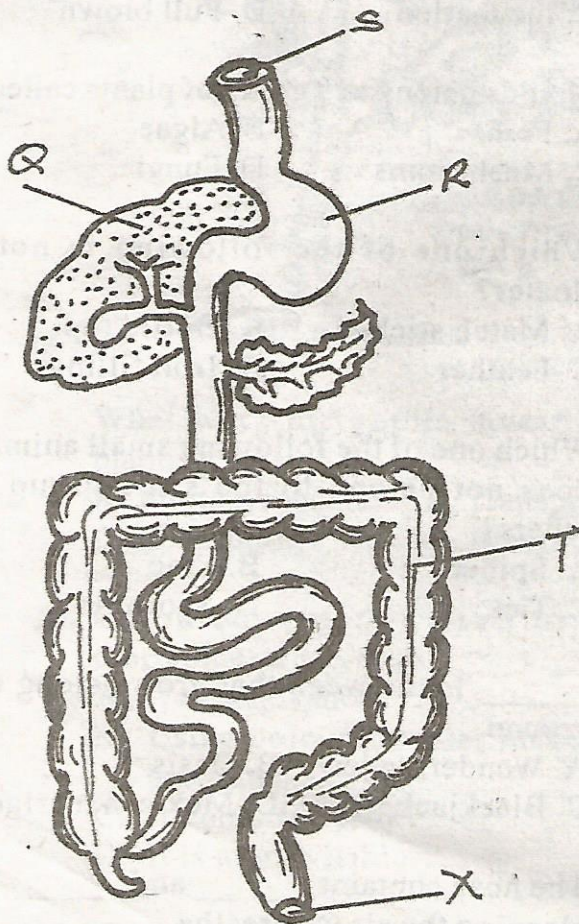
44. Which one of the following is an example of energy giving foods?

- A. Fish                      B. Spinach  
C. Liver                      D. Ugali

45. Which one of the following phases of the moon represents gibbous?



Use the diagram below to answer questions 46-48



46. The diagram represents

- A. Breathing system  
B. Alimentary canal  
C. Circulatory system  
D. Excretory system

47. The part marked Q is \_\_\_\_\_

- A. Duodenum                  B. Rectum  
C. Liver                      D. Appendix

48. Water and mineral salts are absorbed in the part marked:-

- A. S                      B. R                      C. Q                      D. T

49. Fishes and tadpoles breathe by means of:-

- A. Lungs                      B. Spiracles  
C. Stomata                      D. Gills

50. Which one of the following is NOT a function of the roots of a plant?

- A. Support the plant parts  
B. Holding the plant firmly in the ground  
C. Absorption of water and mineral salts  
D. Food storage in some plants