


# NANDI COUNTY

## STD 4 - TERM 3











### SCIENCE

PENPLUS  
NANDI

Time: 1hr 40 mins

- Which of the following is NOT a type of teeth?
  - Jaw
  - Canine
  - Premolar
  - Molar
- \_\_\_\_\_ teeth have 3 roots.
  - Premolar
  - Incisor
  - Molar
  - Canine
- The first teeth grow when a child is \_\_\_\_
  - 6 years
  - 6 months
  - 1 year
  - 6 weeks
- The tooth shown below is a \_\_\_\_  

  - premolar
  - molar
  - canine
  - incisor
- AIDs can affect \_\_\_\_
  - adults only
  - men only
  - all people
  - women only
- AIDs is caused by \_\_\_\_
  - syndrome
  - immunity
  - deficiency
  - HIV
- Air in motion is called \_\_\_\_
  - water
  - temperature
  - smoke
  - wind
- The sending back of light by a mirror is called \_\_\_\_
  - reflection
  - shining
  - reflector
  - echo
- Light helps one to \_\_\_\_ things.
  - see
  - smile
  - shine
  - reflect
- People weed during the \_\_\_\_ season.
  - dry
  - rainy
  - windy
  - wet
- A snake moves by \_\_\_\_
  - crawling
  - walking
  - slithering
  - leaping


**Use the weather chart below to answer questions 12 - 15.**

Day	Morning	Afternoon
Monday		
Tuesday		
Wednesday		
Thursday		
Friday		

- Which day was the BEST to carry an umbrella?



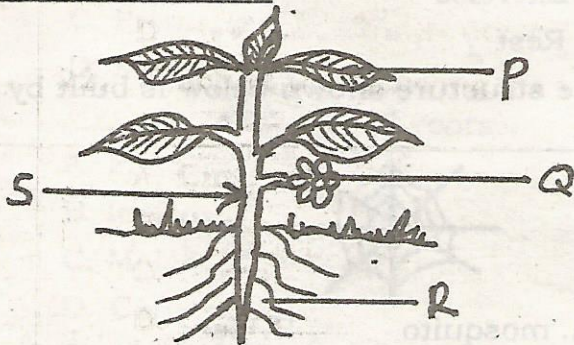
- A. Thursday      B. Friday  
C. Wednesday    D. Monday
13. Which day was the BEST to wash clothes?  
A. Friday      B. Wednesday  
C. Tuesday      D. Monday
14. On which day did it rain throughout?  
A. Thursday      B. Monday  
C. Tuesday      D. Friday
15. Windy condition was observed on \_\_\_\_\_  
A. Wednesday morning  
B. Wednesday afternoon  
C. Thursday morning  
D. Monday afternoon
16. Which of these plants are legumes?  
A. Groundnuts and peas  
B. Sorghum and maize  
C. Coffee and cocoa  
D. Spinach and coconut
17. Which one of the following is NOT a cash crop?  
A. Sunflower  
B. Coffee  
C. Maize  
D. Tea
18. In the table below which group of food crops is NOT correctly matched with its example?
- | <u>Group</u>  | <u>Example</u> |
|---------------|----------------|
| A. Tubers     | Arrowroot      |
| B. Cereals    | Groundnuts     |
| C. Vegetables | Spinach        |
| D. Fruits     | Apple          |
19. The two MAIN types of crops are \_\_\_\_\_  
A. food crops and oil crops  
B. food crops and cash crops  
C. farm crops and cash crops  
D. food crops and farm crops
20. The BEST type of soil for farming is

- A. sand  
B. clay  
C. none  
D. loam
21. The BEST soil for making ribbons is \_\_\_\_\_  
A. loam  
B. sand  
C. all  
D. clay
22. Which of the following plants is NOT a spice?  
A. Cinamon  
B. Garlic  
C. Neem  
D. Gloves
23. The diagram below shows one of the problems related to teeth. Which problem is it?  
  
A. Cavity      B. Tooth decay  
C. Bad smell      D. Bleeding gums
24. The ability of the body to fight against diseases is called \_\_\_\_\_  
A. acquired  
B. syndrome  
C. deficiency  
D. immunity
25. In HIV the letter V stands for \_\_\_\_\_  
A. vain  
B. virus  
C. volume  
D. value
26. Which one of the following is NOT a weed?  
A. Black jack  
B. Oxalis  
C. Sweet potatoes  
D. Sodom apple



27. Which weed has small thorns on the stem, purple flowers and yellow fruits when ripe?
- Pigweed
  - Mexican marigold
  - Oxalis
  - Sodom apple

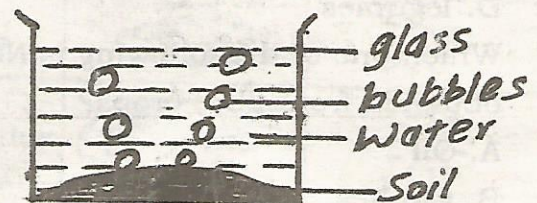
**Study the diagram below and answer questions 28 - 29.**



28. Which part produces seeds?
- P
  - Q
  - R
  - S
29. The part marked R is the \_\_\_\_\_
- leaves
  - roots
  - stem
  - flower
30. The following are ways of maintaining healthy teeth. Which one is NOT?
- Eating sugary foods
  - Eating a balanced diet
  - Visiting a dentist regularly
  - Brushing the teeth after meals
31. An adult person has \_\_\_\_\_ premolar.
- 2
  - 4
  - 8
  - 32
32. Unwanted crops in a farm are known as \_\_\_\_\_

- weeds
- food crops
- cash crops
- cereals

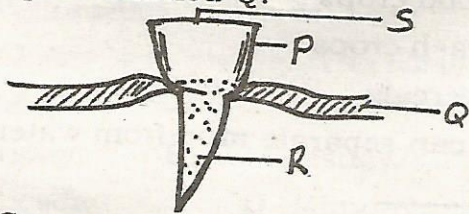
33. We can separate mud from water by \_\_\_\_\_
- boiling
  - pouring
  - transporting
  - filtering
34. Water can be stored in the following containers EXCEPT \_\_\_\_\_
- baskets
  - drums
  - pots
  - tanks
35. Which of the following is NOT a special sound?
- Siren
  - Whispering
  - Screaming
  - Bell ringing
36. The way we behave when taking meals is called \_\_\_\_\_
- food manners
  - house manners
  - tea manners
  - table manners
37. A standard 4 pupil carried out the experiment shown below.



- From the experiment, it is TRUE to say that \_\_\_\_\_
- soil has bubbles
  - soil has animals
  - soil has water
  - soil has air



38. Study the diagram below and name the part marked Q.

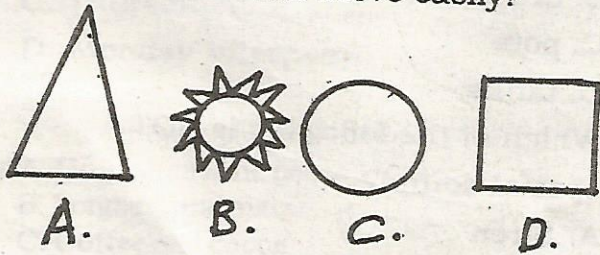


- A. Crown  
B. Root  
C. Gum  
D. Enamel

39. Bees defend themselves by \_\_\_\_\_

- A. biting  
B. hitting  
C. stinging  
D. barking

40. Which wheel will move easily?



41. When a person CANNOT talk he can use \_\_\_\_\_

- A. smell  
B. gestures  
C. taste  
D. sight

42. Coffee, tea and cocoa are \_\_\_\_\_

- A. beverages  
B. tubers  
C. weeds  
D. legumes

43. Which one of the following is NOT obtained from fibre crops?

- A. Oil  
B. Clothes  
C. Ropes  
D. Thread

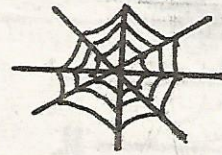
44. The removal of weeds growing among crops is called \_\_\_\_\_

- A. digging  
B. uprooting  
C. weeding  
D. pulling

45. \_\_\_\_\_ is NOT needed for good health.

- A. Food  
B. Sweets  
C. Exercise  
D. Rest

46. The structure shown below is built by a \_\_\_\_\_



- A. mosquito  
B. bee  
C. fly  
D. spider

47. Which of the following is NOT a simple machine?

- A. Bicycle  
B. Hammer  
C. Saw  
D. Spade

48. Bleeding gum is also known as \_\_\_\_\_

- A. cavity  
B. gingivitis  
C. tooth decay  
D. toothache

49. We make water safe for drinking by \_\_\_\_\_

- A. filtering  
B. cooling  
C. heating  
D. boiling

50. Which colour is at the top of a rainbow?

- A. Green  
B. Black  
C. Red  
D. White