

511/3  
MUSIC

**PAPER 3**

**LAINAKU FORM FOUR EXAMS**

**Kenya Certificate of Secondary Education. (KCSE) 2015**

**511/3**

**MUSIC**

**PAPER 3**

**INSTRUCTIONS TO CANDIDATES**

- ❖ Answer **all** the questions in this paper.
- ❖ In question **1**, choose either **(a)** or **(b)**.
- ❖ In question **4**, answer any **two** of the questions numbered **(a)** **(b)** **(c)** and **(d)**
- ❖ Answer questions **from all sections**.

**SECTION A – BASIC SKILLS**

1. Either

- a) Continue the following opening to make a melody of 16 bars for voice-incorporate a sequence and a syncopation. Also modulate to the dominant key before returning to the tonic key (12mrks)

The image shows a musical staff with a treble clef and a key signature of one sharp (F#). The staff contains a handwritten melody in blue ink, which is very dense and scribbled. Below the staff are 15 empty musical staves for continuation.

OR

- b) Using a staff notation in treble clef, write a tune and fit the following words;  
My heart's in the Highlands, my heart is not here,  
My heart's in the Highlands a-chasing the deer.



.....  
.....

c) Name any two parts of Litungu and state the function of each. (4mrks)

.....  
.....

d) State three characteristics of a good soloist (3mrks)

.....  
.....  
.....  
.....

**4. WESTERN MUSIC**

Answer any two of the questions (a), (b), (c) and (d).

**A Claudio Monteverdi**

i. Name two outstanding contemporary composes of Claudio Moterverdi in the history of Western Music. (2mrks)

.....  
.....

ii. Outline four characteristics of his compositions (4mrks)

.....  
.....  
.....  
.....  
.....

iii. What type of work is cats figure? (1mrk)

.....  
.....

**B George F.Handel.**

I. Name his nationality (1mrk)

.....  
.....

II. Outline four contributions to music by G.F.Handel (4mrks)

.....  
.....  
.....  
.....

III. Name two musical appointments which G.F.Handel was offered (2mrks)

.....  
.....

**C Sir Edward Elgar**

I. To which period does he belong? (1mrk)

.....  
.....

II. Outline four characteristics of his music. (4mrks)

.....  
.....

III. Name two symphonies by Handel (2mrks)

.....  
.....  
.....

**D Sergei Prokofiev**

- i. Outline five characteristics of His music? (5mrks)

.....  
.....

- ii. Name two of his contemporary composers (2mks)

.....  
.....

**5. Mjikendaensemble from Folk Music of East Africa**

- i. A part from singing, name two ways in which voice has been used in the recording (2mrks)

.....  
.....

- ii. Compare the introductory and final sections (4mrks)

.....  
.....  
.....

- iii. With reference reference to voice and instruments used, outline four characteristics of the African music which feature in the recording (4mrks)

.....  
.....

**6. Prescribed western music set work Recitative: I TELL YOU A MYSTERY**

- i. During which Music period was the recitative composed? (1mrk)

.....  
.....

- ii. For what media is the Recitative? (5mrks)

.....  
.....

- iii. Name the clef used in line three (1mrk)

-

(iv) Upon what chord is bar one based on?

(1mrk).....  
.....

(v) Name and explain the meaning of the time signature. (1mrk)

.....  
.....

vi) Write the text upon which vocal section is based (1mrk)

.....  
.....

**SECTION C. GENERAL MUSIC KNOWLEDGE**

**(20MRKS)**

vii) a) Explain any five of the following; (5mrks)

i. Tonality

.....  
.....

ii. Ostinato

.....  
.....

iii. Homophonic

iv. ....  
.....

v. Bassoon

vi. ....  
.....

vii. Entabanana





Name.....Index.No: .....

511/1

MUSIC

PAPER 1

Nov. 2014

15 Minutes for each candidate.

LAINAKU KCSE Trial Exam

MUSIC/511

PAPER 1-511/1

INSTRUCTIONS TO CANDIDATES

This paper consists of seven printed pages.

For Examiner's Use Only

	Total score	Students score
Major scale	2mks	
Scale sequence	2mks	
Major arpeggio	2mks	
Minor scale	2mks	
Minor arpeggio	2mks	
Set piece – western	15mks	
African piece	15mks	
Sight reading	10mks	
Total marks	50mks	

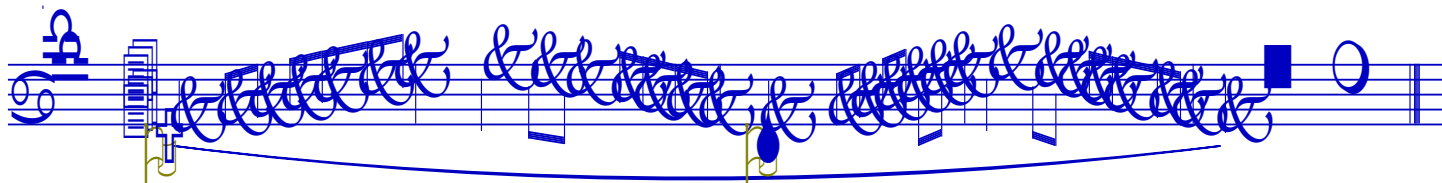
**TECHNICAL EXERCISES**

All candidates presenting voice and recorder will be required to prepare and perform the following technical exercises which may be transposed to keys convenient to the performer as part of the examination:

Voice and recorder (descant and treble)

i) *Major scale*

(to be sung in vowel sound)

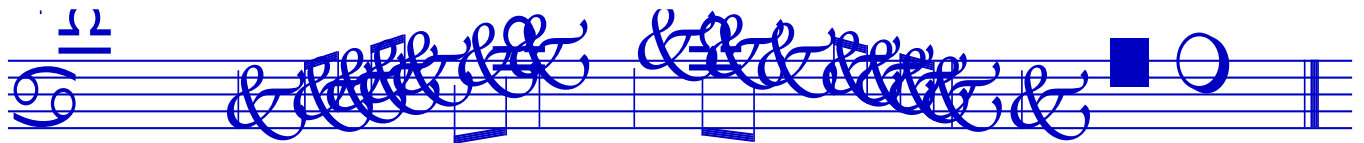


ii) *minor scale*

(to be sung to any vowel sound)

Either

*Harmonic*



Or

*Melodic*



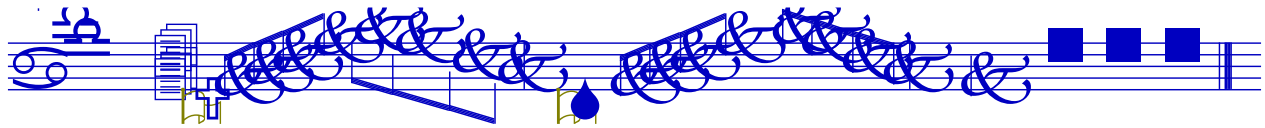
*iii) Scale sequence*

(to be sung to 'la sound)

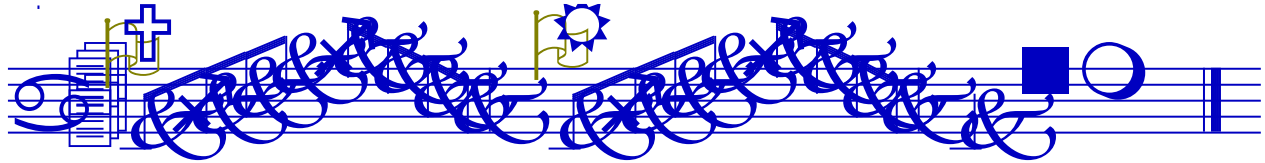


*Iv) Major Scale Arpeggio*

(to be sung to any vowel sound)



*v) Minor scale arpeggio*



## Piano

The candidates will be required to prepare and perform the following scales and arpeggios

*i) scale: two octaves with both hands an octave a part in similar motion,*

Major keys C, G, D, A, F, Bb, Eb, Ab

Minor keys A, E, D, G, F, C

*ii) Arpeggios will be played in the keys given above but should be played with hands separately and with both hands together.*

*iii) Scales in contrary motion 2 octaves only on C major*

*iv) Chromatic scale hands separately starting on C and 2 octaves*

## Woodwind, Brass and Strings

The candidate will be required to prepare and perform the following scales and arpeggios as part of the examination:

The scales should be played to the 9<sup>th</sup> ascending and descending two times. The first time loud (f) second time soft (p).

Arpeggios - For all scales suggested above, these should be played to the 10<sup>th</sup> of the scale first time loud (f) second time soft (p).

Sequence - this should be done in any key chosen by the candidate.

### SIGHT SINGING/READING/PLAYING

The candidate will be required to sing and play at sight an unprepared piece of music of the standard of the set sample

Voice/recorder

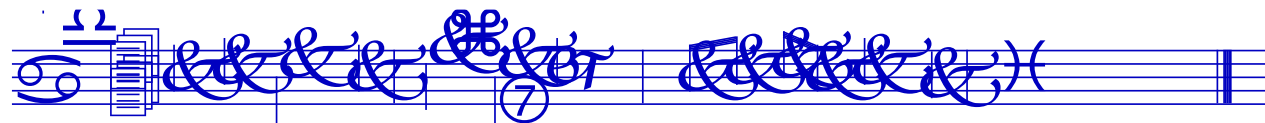
i)



ii)



iii)



Piano

Handwritten musical notation for guitar on a six-line staff. The notation is written in blue ink. It features a treble clef and a key signature of one sharp (F#). The melody consists of six measures. The first measure starts with a treble clef and a sharp sign. The second measure has a '2' above it. The third measure has a '3' above it. The fourth measure has a '4' above it. The fifth measure has a sharp sign. The sixth measure has a double bar line. Below the staff, there are handwritten symbols: a treble clef, a sharp sign, 'er', 'er', 'er', 'er', a sharp sign, and a double bar line.

ii)

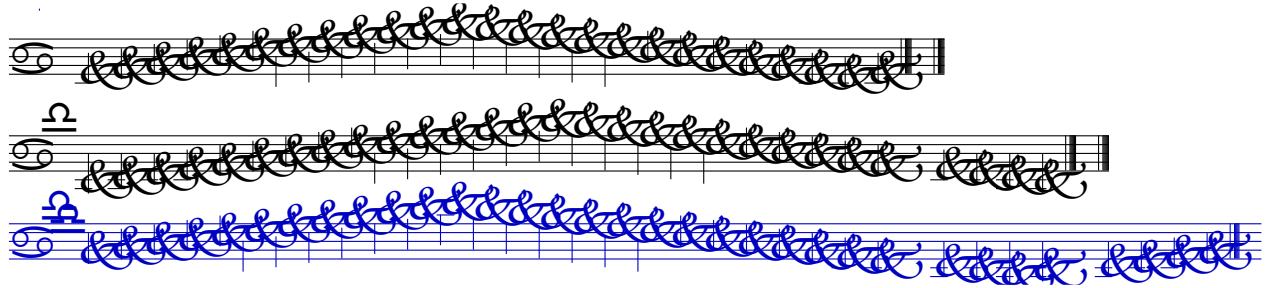
Handwritten musical notation for guitar on a six-line staff. The notation is written in blue ink. It features a treble clef and a key signature of one sharp (F#). The melody consists of four measures. The first measure has a '2' above it. The second measure has a '3' above it. The third measure has a '4' above it. The fourth measure has a sharp sign. Below the staff, there are handwritten symbols: a treble clef, a sharp sign, a double bar line, a sharp sign, a double bar line, a sharp sign, a double bar line, and a sharp sign.

Guitar

## Scale and Arpeggios

The candidate will be required to prepare and perform the following scales and arpeggios as part of the examination:

### Scales



### Arpeggios

